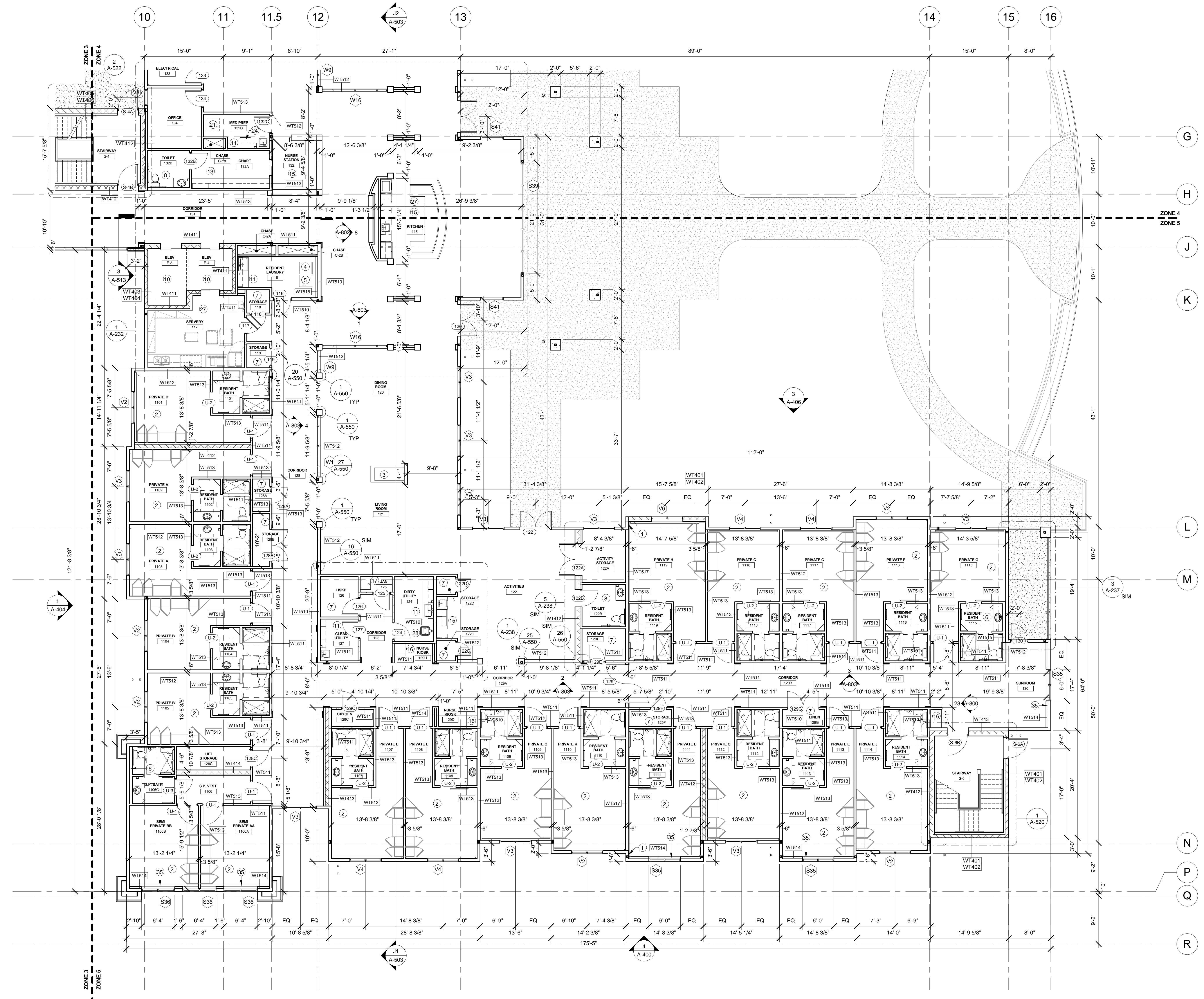


NOTICE: These documents are instruments of professional service and information contained herein is not to be construed as a contract. Lantz-Boggio's interpretations, designs, observations and information contained herein is not to be construed as a contract. Lantz-Boggio's interpretations, designs, observations and information contained herein is not to be construed as a contract.



1 FIRST FLOOR PLAN - ZONE 5
SCALE: 1/8" = 1'-0"

FLOOR PLAN GENERAL NOTES:

1. ALL PARTITION WALLS AND EXTERIOR WALLS ARE DIMENSIONED STUD TO STUD UNLESS NOTED OTHERWISE.
2. REFER TO SHEET A-600 FOR CONSTRUCTION OF WALL ASSEMBLIES.
3. ALL EXTERIOR WALLS TO BE WT501 & WT502 UNLESS OTHERWISE NOTED.
4. ALL GYPSUM BOARD ADJACENT TO SHOWERS & TUBS IS TO BE MOISTURE MOLD RESISTANT (FIBERGLASS AQUA-TOUGH INTERIOR PANELS OR APPROVED EQUAL). COORDINATE WITH ASSEMBLY TYPE WITH REGARDS TO FIRE RATING.
5. GRIDLINES FALL ON FACE OF STUD, TYP.
6. REFER TO A-900 SERIES FOR DOOR SCHEDULE.
7. REFER TO A-900 SERIES FOR WINDOW SCHEDULE.
8. REFER TO INTERIOR WALL AND FLOOR FINISH PLANS FOR FINISH INFORMATION.
9. INTERIOR DOORS TO BE FRAMED 4" FROM ADJACENT WALL TYP., U.O.N.
10. PROVIDE BLOCKING AT ALL EXTERIOR WINDOWS FOR INSTALLATION OF WINDOW COVERINGS. BLOCKING TO BE MINIMUM 4"x4" AT UPPER CORNERS OF GYPSUM BOARD OPENINGS FOR WINDOWS. LOCATED ABOVE AND TO THE OUTSIDE OF THE OPENINGS.
11. CHAIRRAIL, RE: INTERIOR WALL FINISH PLAN FOR LOCATIONS.
12. CORRIDOR HANDRAIL, RE: INTERIOR WALL FINISH PLAN FOR LOCATIONS.
13. SEE SHEETS A-530 FOR ADDITIONAL DIMENSIONS FOR THE ELEVATOR SHAFT AND OPENING SIZES.
14. REFER TO SHEET A-250 FOR ROOF PLAN.
15. REFER TO FOOD SERVICE DRAWINGS FOR KITCHEN EQUIPMENT LIST, ETC.
16. SEE SHEETS A-230 FOR ENLARGED RESIDENT UNITS AND RESIDENT BATHROOM FLOOR PLANS.
17. DETAILS FOR HANDRAIL TRANSITIONS RE: SHEET A-851.
18. ALL DIMENSIONS ARE TO CENTERLINE OF WINDOW & DOORS UNLESS NOTED OTHERWISE.

FLOOR PLAN KEY NOTES:

- 1 FURR-OUT EXTERIOR WALL WITH EXTRA LAYER OF GYP. BD. TO ALIGN WITH INTERIOR WALL.
- 2 REFER TO SHEETS A-230 FOR ENLARGED RESIDENT ROOM & RESIDENT BATHROOM PLANS.
- 3 GAS FIREPLACE, RE: SPECIFICATIONS
- 4 WASHING MACHINE, RE: SPECIFICATIONS
- 5 DRYER, RE: SPECIFICATIONS
- 6 ADDITIONAL FURRED OUT WALL AT PLUMBING WALL EXTERIOR
- 7 SHELVING, RE: 9' A-851
- 8 REFER TO ENLARGED TOILET PLAN FOR ALL TOILET ACCESSORIES.
- 9 NOT USED
- 10 ELEVATOR, RE: SPECIFICATIONS
- 11 PLASTIC LAMINATE COUNTER WITH SINK AND CABINERY
- 12 STAFF LOCKERS, RE: SPECIFICATIONS
- 13 PLASTIC LAMINATE COMPUTER WORKSTATION, RE: INTERIOR ELEVATION
- 14 ELECTRIC WATER COOLERS, RE: PLUMBING
- 15 CUSTOM BUILT-IN CASEWORK, RE: INTERIOR DESIGN DWGS
- 16 PLASTIC LAMINATE COUNTER, RE: INTERIOR ELEVATIONS
- 17 MOP SINK REFER TO TYPICAL ELEVATIONS 25 & 26/ A-800; RE: PLUMBING
- 18 OUTLINE OF ROOF BELOW
- 19 REFRIGERATOR, RE: SPECIFICATIONS
- 20 PARTIAL HEIGHT WALL, RE: INTERIOR ELEVATION.
- 21 MEDICATION DISPENSER, BY OWNER
- 22 ROOF HATCH LADDER RE: SPECIFICATIONS
- 23 ADJUSTABLE SINK, RE: PLUMBING
- 24 UNDER-COUNTER REFRIGERATOR, RE: SPECIFICATIONS
- 25 BASEBOARD HEAT, RE: MECHANICAL
- 26 ALIGN WALLS
- 27 KITCHEN/ SERVERY EQUIPMENT, RE: FOOD SERVICE PLANS
- 28 FLUSH SINK, RE: PLUMBING
- 29 TIMECLOCK, BY OWNER
- 30 COUNTER TOP WITH UNDERMOUNT SINK, RE: INTERIOR FINISH SPECIFICATIONS
- 31 ROOF/ DECK DRAIN
- 32 FURR OUT ALL CONCRETE PILASTERS WITH WT514
- 33 FURR OUT ENTIRE ROOM WITH WT514 AS SHOWN
- 34 DOCK LEVELER, RE: SPECIFICATIONS
- 35 ADDITIONAL FURR OUT AT STOREFRONT WINDOWS, WT514 AS SHOWN
- 36 FOLDING DOORS, RE: SPECIFICATIONS
- 37 EXTERIOR RAILING, RE: SPECIFICATIONS
- 38 ROOF ABOVE

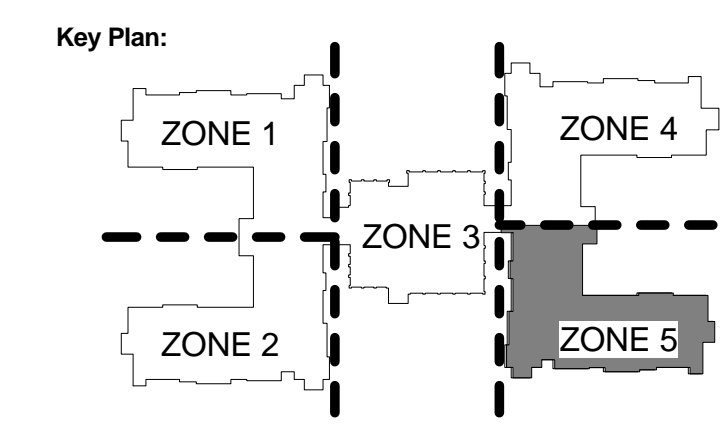
Lantz-Boggio Architects, P.C.
5650 DTC Pkwy, 1 Suite 200 | Englewood | CO 80111
Ph: 303.773.0436 | Fax: 303.773.8709

PIONEER MANOR
Gillette/Wyoming
2012.3000

- Owner:**
CAMPBELL COUNTY MEMORIAL HOSPITAL
501 South Burma Ave.
Gillette, WY 82716
P.O. Box 3011
Gillette, WY 82717
Ph. 307.688.1000
- Civil Engineer:**
PCA Engineering, Inc.
P.O. Box 2185
4506 Wigwam Blvd.
Gillette, WY 82718
Ph. 307.687.0800
Contact: Clark Sanders
- Structural Engineer:**
Jirsa Hedrick & Associates
7000 E. Bellevue Ave. Suite 250
Greenwood Village, CO 80111
Ph. 303.839.1963
Contact: Steve Jirsa
- Mechanical/Plumbing Engineer:**
Given & Associates, Inc.
735 S. Xenon Court, Suite 201
Lakewood, CO 80228
Ph. 303.716.1270
Contact: Jeff Given
- Electrical Engineer:**
Alber Engineering
5173 Oak Hollow Drive
Morrison, CO 80465
Ph. 303.736.2739
Contact: Jerry Alber
- Interior Design:**
LBA Interiors
5650 DTC Parkway, Suite 100
Englewood, CO 80111
Ph. 303.773.0436
Contact: Mary Lou Parham
- Food Service:**
United Restaurant Supply, Inc.
725 Clark Place
Colorado Springs, CO 80915
Ph. 719.574.3220
Contact: Jon Bluhm
- Landscape Architect:**
Four Front Design, Inc.
517 7th Street
Rapid City, SD 57701
Ph. 605.342.9470
Contact: Eirik Heikes

No.	Date	Description
1	05/17/2013	Design Development
2	10/31/2013	Construction Documents

Seal:



LBA Project Number: 2012.3000
Date: October 31, 2013

FIRST FLOOR PLAN - ZONE 5

A-211.5
DRAWN BY: Author
2013 Copyright