

PIONEER MANOR

Gillette/ Wyoming
 2012.3000

Owner:
 Campbell County Memorial Hospital
 501 South Burma Ave.
 Gillette, WY 82716
 P.O. Box 3011
 Gillette, WY 82717
 Ph. 307.688.1000

Civil Engineer:
 PCA Engineering, Inc.
 P.O. Box 2185
 4506 Wigwam Blvd.
 Gillette, WY 82718
 Ph. 307.687.0800
 Contact: Clark Sanders

Structural Engineer:
 Jirsa Hedrick & Associates
 7000 E. Bellevue Ave. Suite 250
 Greenwood Village, CO 80111
 Ph. 303.839.1963
 Contact: Steve Jirsa

Mechanical/Plumbing Engineer:
 Given & Associates, Inc.
 735 S. Xenon Court, Suite 201
 Lakewood, CO 80228
 Ph. 303.716.1270
 Contact: Jeff Given

Electrical Engineer:
 Alber Engineering
 5173 Oak Hollow Drive
 Morrison, CO 80465
 Ph. 303.736.2739
 Contact: Jerry Alber

Interior Design:
 L&A Interiors
 5650 DTC Parkway, Suite 100
 Englewood, CO 80111
 Ph. 303.773.0436
 Contact: Mary Lou Parham

Food Service:
 United Restaurant Supply, Inc.
 725 Clark Place
 Colorado Springs, CO 80915
 Ph. 719.574.3220
 Contact: Jon Bluhm

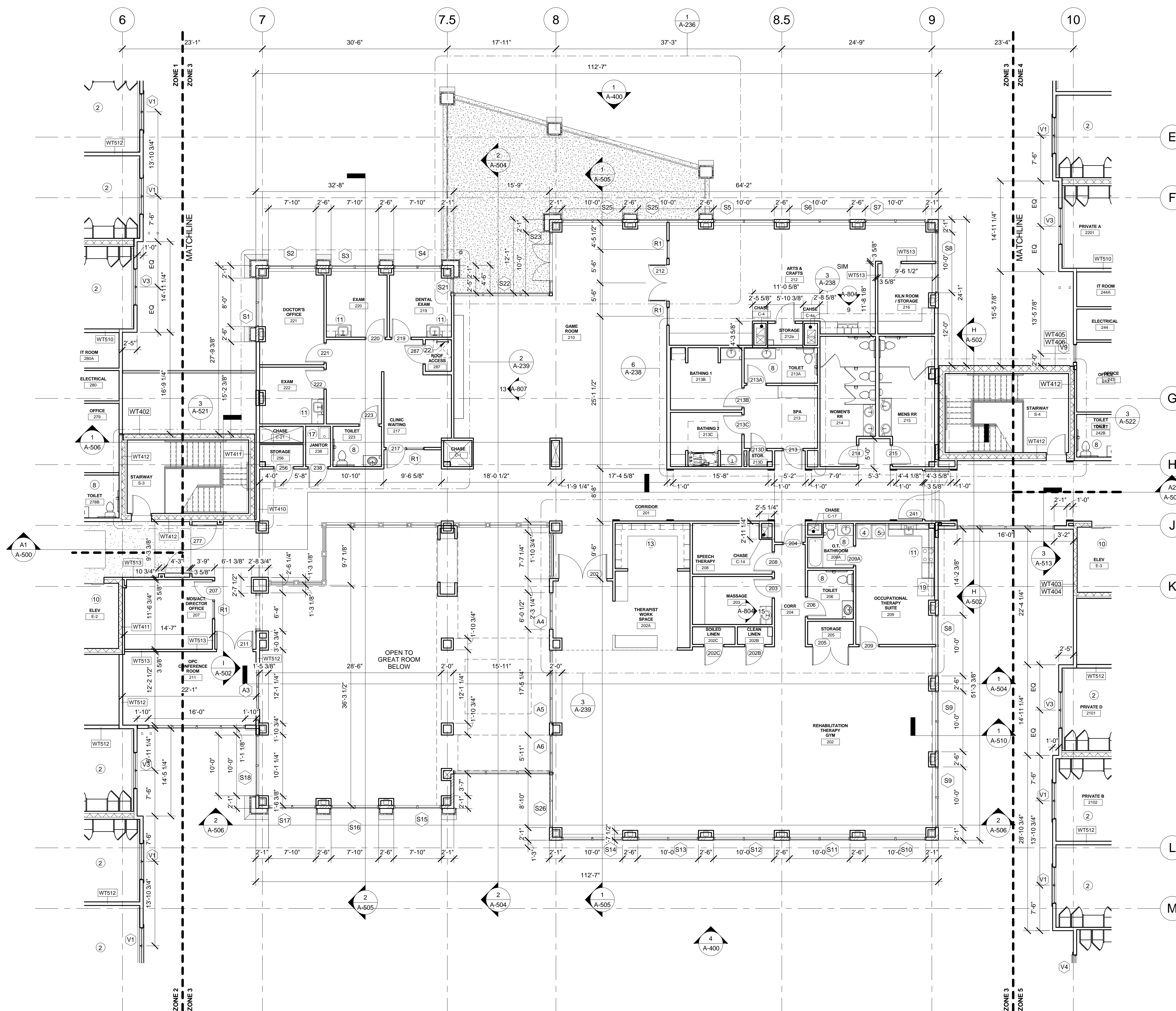
Landscape Architect:
 Four Front Design, Inc.
 517 7th Street
 Rapid City, SD 57701
 Ph. 605.342.9470
 Contact: Eirik Heikes

FLOOR PLAN GENERAL NOTES:

1. ALL PARTITION WALLS AND EXTERIOR WALLS ARE DIMENSIONED STUD TO STUD UNLESS NOTED OTHERWISE.
2. REFER TO SHEET A-600 FOR CONSTRUCTION OF WALL ASSEMBLIES.
3. ALL EXTERIOR WALLS TO BE WT501 & WT502 UNLESS OTHERWISE NOTED.
4. ALL GYPSUM BOARD ADJACENT TO SHOWERS & TUBS IS TO BE MOISTURE/MOLD RESISTANT (FIBEROCK AQUA-TOUGH INTERIOR PANELS OR APPROVED EQUAL), COORDINATE WITH ASSEMBLY TYPE WITH REGARDS TO FIRE RATING.
5. GRIDLINES FALL ON FACE OF STUD, TYP.
6. REFER TO A-900 SERIES FOR DOOR SCHEDULE.
7. REFER TO A-900 SERIES FOR WINDOW SCHEDULE.
8. REFER TO INTERIOR WALL AND FLOOR FINISH PLANS FOR FINISH INFORMATION.
9. INTERIOR DOORS TO BE FRAMED 4" FROM ADJACENT WALL TYP., U.O.N.
10. PROVIDE BLOCKING AT ALL EXTERIOR WINDOWS FOR INSTALLATION OF WINDOW COVERINGS. BLOCKING TO BE MINIMUM 4"x4" AT UPPER CORNERS OF GYPSUM BOARD OPENINGS FOR WINDOWS, LOCATED ABOVE AND TO THE OUTSIDE OF THE OPENINGS.
11. CHAIRRAIL, RE: INTERIOR WALL FINISH PLAN FOR LOCATIONS.
12. CORRIDOR HANDRAIL RE: INTERIOR WALL FINISH PLAN FOR LOCATIONS.
13. SEE SHEETS A-530 FOR ADDITIONAL DIMENSIONS FOR THE ELEVATOR SHAFT AND OPENING SIZES.
14. REFER TO SHEET A-250 FOR ROOF PLAN.
15. REFER TO FOOD SERVICE DRAWINGS FOR KITCHEN EQUIPMENT LIST, ETC.
16. SEE SHEETS A-230 FOR ENLARGED RESIDENT UNITS AND RESIDENT BATHROOM FLOOR PLANS.
17. DETAILS FOR HANDRAIL TRANSITIONS RE: SHEET A-851.
18. ALL DIMENSIONS ARE TO CENTERLINE OF WINDOW & DOORS UNLESS NOTED OTHERWISE.

FLOOR PLAN KEY NOTES:

1. FURR-OUT EXTERIOR WALL WITH EXTRA LAYER OF GYP BD. TO ALIGN WITH INTERIOR WALL.
2. REFER TO SHEETS A-230 FOR ENLARGED RESIDENT ROOM & RESIDENT BATHROOM PLANS.
3. GAS FIREPLACE, RE: SPECIFICATIONS.
4. WASHING MACHINE, RE: SPECIFICATIONS.
5. DRYER, RE: SPECIFICATIONS.
6. ADDITIONAL FURRED OUT WALL AT PLUMBING WALL EXTERIOR.
7. SHELVING, RE: 9/ A-851
8. REFER TO ENLARGED TOILET PLAN FOR ALL TOILET ACCESSORIES.
9. NOT USED
10. ELEVATOR, RE: SPECIFICATIONS
11. PLASTIC LAMINATE COUNTER WITH SINK AND CABINERY
12. STAFF LOCKERS, RE: SPECIFICATIONS
13. PLASTIC LAMINATE COMPUTER WORKSTATION, RE: INTERIOR ELEVATION
14. ELECTRIC WATER COOLERS; RE: PLUMBING
15. CUSTOM BUILT-IN CASEWORK; RE: INTERIOR DESIGN DWGS
16. PLASTIC LAMINATE COUNTER; RE: INTERIOR ELEVATIONS
17. MOP SINK REFER TO TYPICAL ELEVATIONS 25 & 26/ A-800; RE: PLUMBING
18. OUTLINE OF ROOF BELOW
19. REFRIGERATOR, RE: SPECIFICATIONS
20. PARTIAL HEIGHT WALL, RE: INTERIOR ELEVATION.
21. MEDICATION DISPENSER, BY OWNER
22. ROOF HATCH LADDER RE: SPECIFICATIONS
23. ADJUSTABLE SINK; RE: PLUMBING
24. UNDER-COUNTER REFRIGERATOR; RE: SPECIFICATIONS
25. BASEBOARD HEAT; RE: MECHANICAL
26. ALIGN WALLS
27. KITCHEN/ SERVERY EQUIPMENT, RE: FOOD SERVICE PLANS
28. FLUSH SINK; RE: PLUMBING
29. TIMECLOCK, BY OWNER
30. COUNTER TOP WITH UNDERMOUNT SINK, RE: INTERIOR FINISH SPECIFICATIONS
31. ROOF/ DECK DRAIN
32. FURR OUT ALL CONCRETE PILLARS WITH WT514
33. FURR OUT ENTIRE ROOM WITH WT514 AS SHOWN
34. DOCK LEVELER, RE: SPECIFICATIONS
35. ADDITIONAL FURR OUT AT STOREFRONT WINDOWS, WT514 AS SHOWN
36. FOLDING DOORS, RE: SPECIFICATIONS
37. EXTERIOR RAILING, RE: SPECIFICATIONS
38. ROOF ABOVE

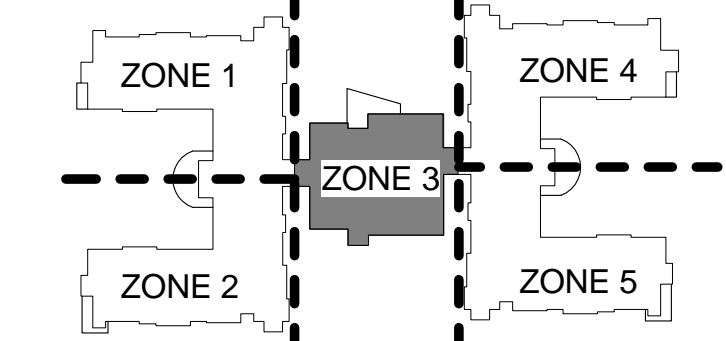


1 SECOND FLOOR PLAN - ZONE 3
 SCALE: 1/8" = 1'-0"

Seal:



Key Plan:



LBA Project Number: 2012.3000
 Date: October 31, 2013

SECOND FLOOR PLAN - ZONE 3

A-221.3

DRAWN BY: Author

2013 Copyright ©

NOTICE: These documents are instruments of professional service and information contained herein is incomplete unless used in conjunction with Lantz-Boggio's interpretations, decisions, observations and administrations. Use or reproduction of these documents in whole or part without Lantz-Boggio's consent is in violation of common law, copyrights, statutory and other reserved rights. Refer to Act 17 U.S.C., par. 511 (1991), which preempts state and local public records act. Refer to Act 17 U.S.C., par. 301 (1991).