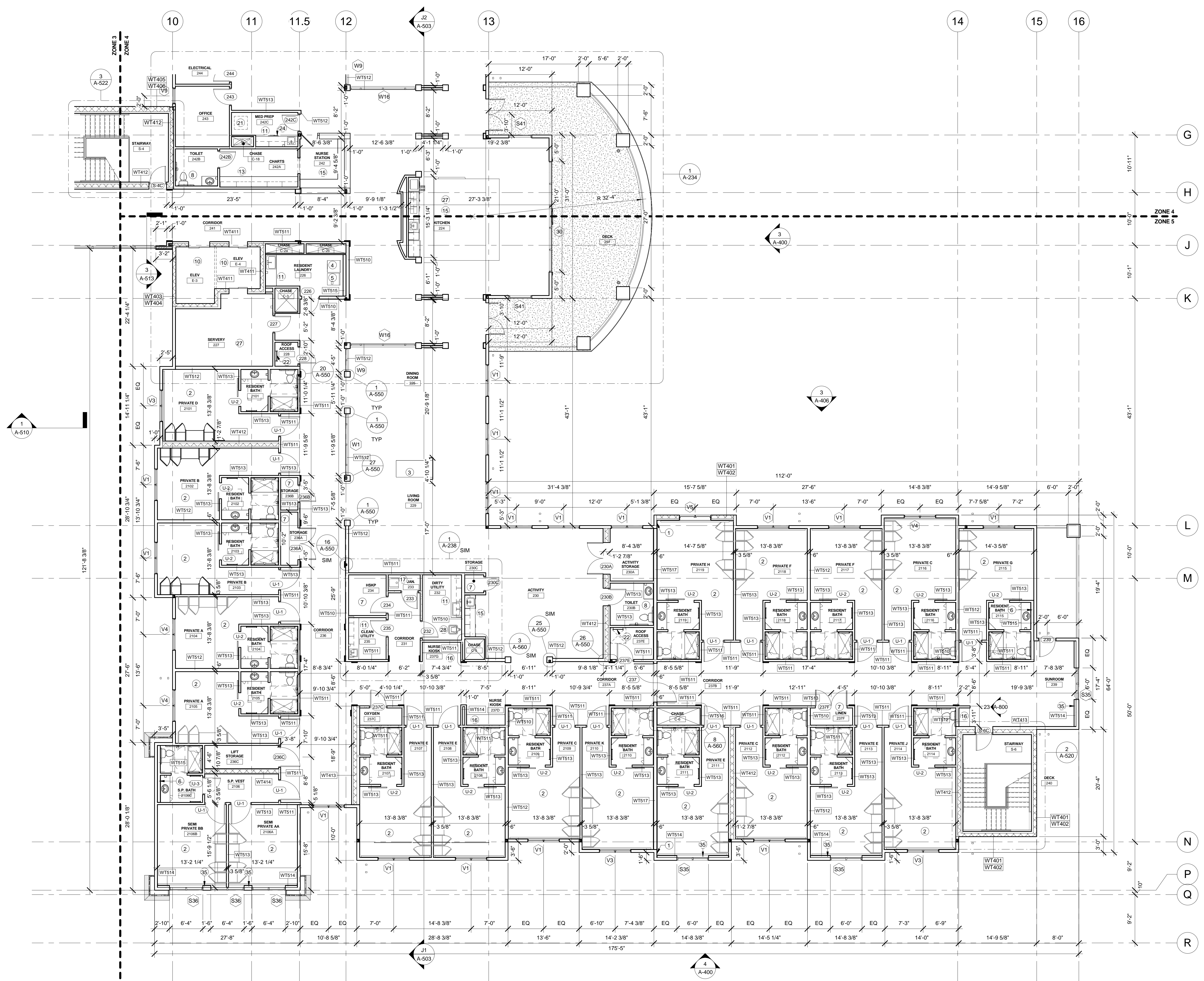


FLOOR PLAN GENERAL NOTES:

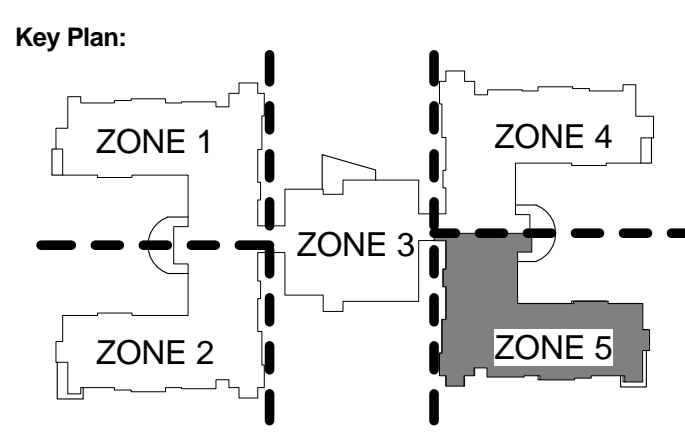
1. ALL PARTITION WALLS AND EXTERIOR WALLS ARE DIMENSIONED STUD TO STUD UNLESS NOTED OTHERWISE.
2. REFER TO SHEET A-600 FOR CONSTRUCTION OF WALL ASSEMBLIES.
3. ALL EXTERIOR WALLS TO BE WTS501 & WTS502 UNLESS OTHERWISE NOTED.
4. ALL GYPSUM BOARD ADJACENT TO SHOWERS & TUBS IS TO BE MOISTURE/ MOLD RESISTANT (FIBERROCK AQUA-TOUGH INTERIOR PANELS OR APPROVED EQUAL, COORDINATE WITH ASSEMBLY TYPE WITH REGARDS TO FIRE RATING).
5. GRIDLINES FALL ON FACE OF STUD, TYP.
6. REFER TO A-900 SERIES FOR WINDOW SCHEDULE
7. REFER TO A-900 SERIES FOR WINDOW SCHEDULE
8. REFER TO INTERIOR WALL AND FLOOR FINISH PLANS FOR FINISH INFORMATION
9. INTERIOR DOORS TO BE FRAMED 4" FROM ADJACENT WALL TYP., U.O.N.
10. PROVIDE BLOCKING AT ALL EXTERIOR WINDOWS FOR INSTALLATION OF WINDOW COVERINGS. BLOCKING TO BE MINIMUM 4"x4" AT UPPER CORNERS OF GYPSUM BOARD OPENINGS FOR WINDOWS, LOCATED ABOVE AND TO THE OUTSIDE OF THE OPENINGS
11. CHAIRRAIL, RE: INTERIOR WALL FINISH PLAN FOR LOCATIONS
12. CORRIDOR HANDRAIL RE: INTERIOR WALL FINISH PLAN FOR LOCATIONS
13. SEE SHEETS A-530 FOR ADDITIONAL DIMENSIONS FOR THE ELEVATOR SHAFT AND OPENING SIZES.
14. REFER TO SHEET A-250 FOR ROOF PLAN.
15. REFER TO FOOD SERVICE DRAWINGS FOR KITCHEN EQUIPMENT LIST, ETC.
16. SEE SHEETS A-230 FOR ENLARGED RESIDENT UNITS AND RESIDENT BATHROOM FLOOR PLANS
17. DETAILS FOR HANDRAIL TRANSITIONS RE: SHEET A-851.
18. ALL DIMENSIONS ARE TO CENTERLINE OF WINDOW & DOORS UNLESS NOTED OTHERWISE.

FLOOR PLAN KEY NOTES:

- 1 FURR-OUT EXTERIOR WALL WITH EXTRA LAYER OF GYP BD. TO ALIGN WITH INTERIOR WALL.
- 2 REFER TO SHEETS A-230 FOR ENLARGED RESIDENT ROOM & RESIDENT BATHROOM PLANS.
- 3 GAS FIREPLACE, RE: SPECIFICATIONS
- 4 WASHING MACHINE, RE: SPECIFICATIONS
- 5 DRYER, RE: SPECIFICATIONS
- 6 ADDITIONAL FURRED OUT WALL AT PLUMBING WALL EXTERIOR
- 7 SHELVING, RE: 9' A-851
- 8 REFER TO ENLARGED TOILET PLAN FOR ALL TOILET ACCESSORIES.
- 9 NOT USED
- 10 ELEVATOR, RE: SPECIFICATIONS
- 11 PLASTIC LAMINATE COUNTER WITH SINK AND CABINETY
- 12 STAFF LOCKERS, RE: SPECIFICATIONS
- 13 PLASTIC LAMINATE COMPUTER WORKSTATION, RE: INTERIOR ELEVATION
- 14 ELECTRIC WATER COOLERS, RE: PLUMBING
- 15 CUSTOM BUILT-IN CASEWORK; RE: INTERIOR DESIGN DWGS
- 16 PLASTIC LAMINATE COUNTER; RE: INTERIOR ELEVATIONS
- 17 MOP SINK REFER TO TYPICAL ELEVATIONS 25 & 26/ A-800; RE: PLUMBING
- 18 OUTLINE OF ROOF BELOW
- 19 REFRIGERATOR, RE: SPECIFICATIONS
- 20 PARTIAL HEIGHT WALL, RE: INTERIOR ELEVATION.
- 21 MEDICATION DISPENSER, BY OWNER
- 22 ROOF HATCH LADDER RE: SPECIFICATIONS
- 23 ADJUSTABLE SINK; RE: PLUMBING
- 24 UNDER-COUNTER REFRIGERATOR; RE: SPECIFICATIONS
- 25 BASEBOARD HEAT; RE: MECHANICAL
- 26 ALIGN WALLS
- 27 KITCHEN SERVARY EQUIPMENT, RE: FOOD SERVICE PLANS
- 28 FLUSH SINK; RE: PLUMBING
- 29 TIMECLOCK, BY OWNER
- 30 COUNTER TOP WITH UNDERMOUNT SINK; RE: INTERIOR FINISH SPECIFICATIONS
- 31 ROOF/DECK DRAIN
- 32 FURR OUT ALL CONCRETE PILASTERS WITH WTS14
- 33 FURR OUT ENTIRE ROOM WITH WTS14 AS SHOWN
- 34 DOCK LEVELER, RE: SPECIFICATIONS
- 35 ADDITIONAL FURR OUT AT STOREFRONT WINDOWS, WTS14 AS SHOWN
- 36 FOLDING DOORS; RE: SPECIFICATIONS
- 37 EXTERIOR RAILING, RE: SPECIFICATIONS
- 38 ROOF ABOVE



1 SECOND FLOOR PLAN - ZONE 5
 SCALE: 1/8" = 1'-0"



LBA Project Number: 2012.3000
 Date: October 31, 2013

SECOND FLOOR PLAN - ZONE 5

A-221.5

NOTICE: These documents are instruments of professional service and information contained herein is incomplete unless used in conjunction with Lantz-Boggio's interpretations, designs, observations and administrative. Use or reproduction of these documents in whole or part without Lantz-Boggio's consent is in violation of common law, copyrights, statutory and other reserved rights. Refer to Act 17 U.S.C., par. 511 (1991), which prohibits state and local public records act. Refer to Act 17 U.S.C., par. 301 (1991).