

NOTICE: These documents are instruments of professional service and information contained therein is incomplete unless used in conjunction with Lantz-Boggio's interpretations, decisions, observations and administrative use. Refer to Act 17 U.S.C., par. 301 (1991).

Owner:
Campbell County Memorial Hospital
501 South Burma Ave.
Gillette, WY 82716
P.O. Box 3011
Gillette, WY 82717
Ph. 307.688.1000

Civil Engineer:
PCA Engineering, Inc.
P.O. Box 2185
4506 Wigwam Blvd.
Gillette, WY 82718
Ph. 307.687.0600
Contact: Clark Sanders

Structural Engineer:
Jirsa Hedrick & Associates
7000 E. Bellevue Ave. Suite 250
Greenwood Village, CO 80111
Ph. 303.839.1963
Contact: Steve Jirsa

Mechanical/Plumbing Engineer:
Given & Associates, Inc.
735 S. Xenon Court, Suite 201
Lakewood, CO 80228
Ph. 303.716.1270
Contact: Jeff Given

Electrical Engineer:
Alber Engineering
5173 Oak Hollow Drive
Morrison, CO 80465
Ph. 303.736.2739
Contact: Jerry Alber

Interior Design:
LBA Interiors
5650 DTC Parkway, Suite 100
Englewood, CO 80111
Ph. 303.773.0436
Contact: Mary Lou Parham

Food Service:
United Restaurant Supply, Inc.
725 Clark Place
Colorado Springs, CO 80915
Ph. 719.574.3220
Contact: Jon Bluhm

Landscape Architect:
Four Front Design, Inc.
517 7th Street
Rapid City, SD 57701
Ph. 605.342.9470
Contact: Eirik Heikes

FLOOR PLAN GENERAL NOTES:

- ALL PARTITION WALLS AND EXTERIOR WALLS ARE DIMENSIONED STUD TO STUD UNLESS NOTED OTHERWISE.
- REFER TO SHEET A-600 FOR CONSTRUCTION OF WALL ASSEMBLIES.
- ALL EXTERIOR WALLS TO BE WT501 & WT502 UNLESS OTHERWISE NOTED.
- ALL GYPSUM BOARD ADJACENT TO SHOWERS & TUBS IS TO BE MOISTURE/MOLD RESISTANT (FIBEROCK AQUA-TOUGH INTERIOR PANELS OR APPROVED EQUAL), COORDINATE WITH ASSEMBLY TYPE WITH REGARDS TO FIRE RATING.
- GRIDLINES FALL ON FACE OF STUD, TYP.
- REFER TO A-900 SERIES FOR DOOR SCHEDULE
- REFER TO A-900 SERIES FOR WINDOW SCHEDULE
- REFER TO INTERIOR WALL AND FLOOR FINISH PLANS FOR FINISH INFORMATION
- INTERIOR DOORS TO BE FRAMED 4" FROM ADJACENT WALL TYP., U.O.N.
- PROVIDE BLOCKING AT ALL EXTERIOR WINDOWS FOR INSTALLATION OF WINDOW COVERINGS. BLOCKING TO BE MINIMUM 4"x4" AT UPPER CORNERS OF GYPSUM BOARD OPENINGS FOR WINDOWS, LOCATED ABOVE AND TO THE OUTSIDE OF THE OPENINGS.
- CHAIRRAIL, RE: INTERIOR WALL FINISH PLAN FOR LOCATIONS
- CORRIDOR HANDRAIL, RE: INTERIOR WALL FINISH PLAN FOR LOCATIONS
- SEE SHEETS A-530 FOR ADDITIONAL DIMENSIONS FOR THE ELEVATOR SHAFT AND OPENING SIZES.
- REFER TO SHEET A-250 FOR ROOF PLAN.
- REFER TO FOOD SERVICE DRAWINGS FOR KITCHEN EQUIPMENT LIST, ETC.
- SEE SHEETS A-230 FOR ENLARGED RESIDENT UNITS AND RESIDENT BATHROOM FLOOR PLANS
- DETAILS FOR HANDRAIL TRANSITIONS RE: SHEET A-851.
- ALL DIMENSIONS ARE TO CENTERLINE OF WINDOW & DOORS UNLESS NOTED OTHERWISE.

FLOOR PLAN KEY NOTES:

- FURR-OUT EXTERIOR WALL WITH EXTRA LAYER OF GYP BD. TO ALIGN WITH INTERIOR WALL.
- REFER TO SHEETS A-230 FOR ENLARGED RESIDENT ROOM & RESIDENT BATHROOM PLANS.
- GAS FIREPLACE, RE: SPECIFICATIONS
- WASHING MACHINE, RE: SPECIFICATIONS
- DRYER, RE: SPECIFICATIONS
- ADDITIONAL FURRED OUT WALL AT PLUMBING WALL EXTERIOR
- SHELVING, RE: 9/A-851
- REFER TO ENLARGED TOILET PLAN FOR ALL TOILET ACCESSORIES.
- NOT USED
- ELEVATOR, RE: SPECIFICATIONS
- PLASTIC LAMINATE COUNTER WITH SINK AND CABINETS
- STAFF LOCKERS, RE: SPECIFICATIONS
- PLASTIC LAMINATE COMPUTER WORKSTATION, RE: INTERIOR ELEVATION
- ELECTRIC WATER COOLERS, RE: PLUMBING
- CUSTOM BUILT-IN CASEWORK, RE: INTERIOR DESIGN DWGS
- PLASTIC LAMINATE COUNTER, RE: INTERIOR ELEVATIONS
- MOP SINK REFER TO TYPICAL ELEVATIONS 25 & 26/ A-800, RE: PLUMBING
- OUTLINE OF ROOF BELOW
- REFRIGERATOR, RE: SPECIFICATIONS
- PARTIAL HEIGHT WALL, RE: INTERIOR ELEVATION.
- MEDICATION DISPENSER, BY OWNER
- ROOF HATCH LADDER RE: SPECIFICATIONS
- ADJUSTABLE SINK, RE: PLUMBING
- UNDER-COUNTER REFRIGERATOR, RE: SPECIFICATIONS
- BASEBOARD HEAT, RE: MECHANICAL
- ALIGN WALLS
- KITCHEN/ SERVERY EQUIPMENT, RE: FOOD SERVICE PLANS
- FLUSH SINK, RE: PLUMBING
- TIMECLOCK, BY OWNER
- COUNTER TOP WITH UNDERMOUNT SINK, RE: INTERIOR FINISH SPECIFICATIONS
- ROOF/ DECK DRAIN
- FURR OUT ALL CONCRETE PLASTERS WITH WT514
- FURR OUT ENTIRE ROOM WITH WT514 AS SHOWN
- DOCK LEVELER, RE: SPECIFICATIONS
- ADDITIONAL FURR OUT AT STOREFRONT WINDOWS, WT514 AS SHOWN
- FOLDING DOORS, RE: SPECIFICATIONS
- EXTERIOR RAILING, RE: SPECIFICATIONS
- ROOF ABOVE

TOILET ACCESSORIES:

SEE SPECIFICATION SECTION FOR ADDITIONAL INFORMATION.
SEE TYPICAL MOUNTING HEIGHTS DETAILS FOR INSTALLATION HEIGHTS.

- (A) SOAP DISPENSER
- (B) TOILET TISSUE HOLDER (SINGLE)
- (C) MIRROR: VERIFY SIZE & STYLE W/ INTERIOR ELEVATIONS (SEE SECTION 08800-GLAZING)
- (D) TOWEL BAR, CONTRACTOR TO PROVIDE ADEQUATE BLOCKING AS REQUIRED.
- (E) GRAB BAR: SIZE AS INDICATED ON INTERIOR ELEVATIONS. PLASTIC, REINFORCED W/ STAINLESS STEEL INSERTS AND CONCEALED FASTENERS. COLOR, WHITE. CONTRACTOR TO PROVIDE ADEQUATE BLOCKING AS REQUIRED.
- (F) PAPER TOWEL DISPENSER
- (G) UTILITY SHELF
- (H) HOSE AND HOSE HOLDER
- (J) MOP HOLDER 24"

No.	Date	Description
1	05/17/2013	Design Development
2	10/31/2013	Construction Documents

Seal:

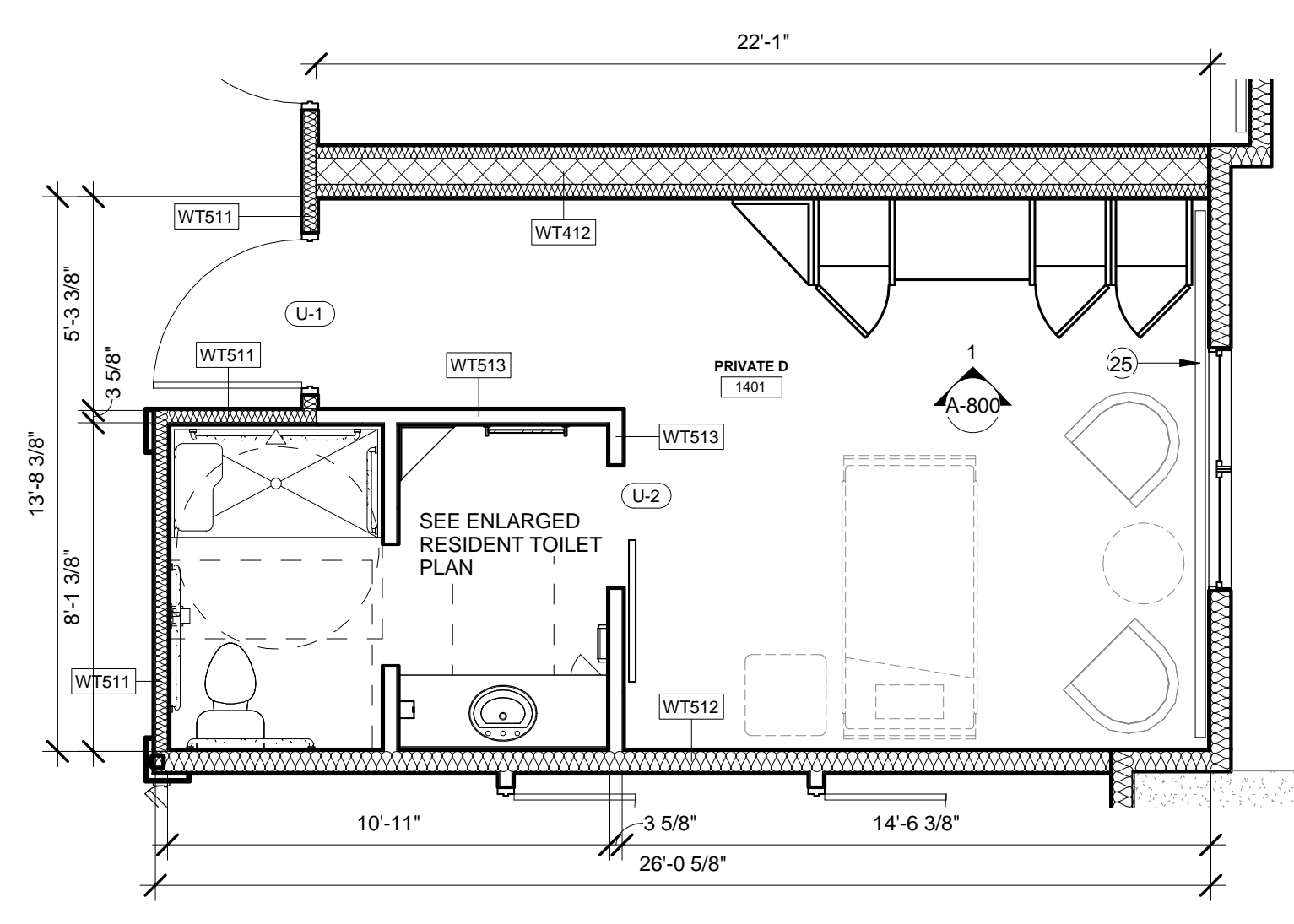
Key Plan:

LBA Project Number: 2012.3000
Date: October 31, 2013

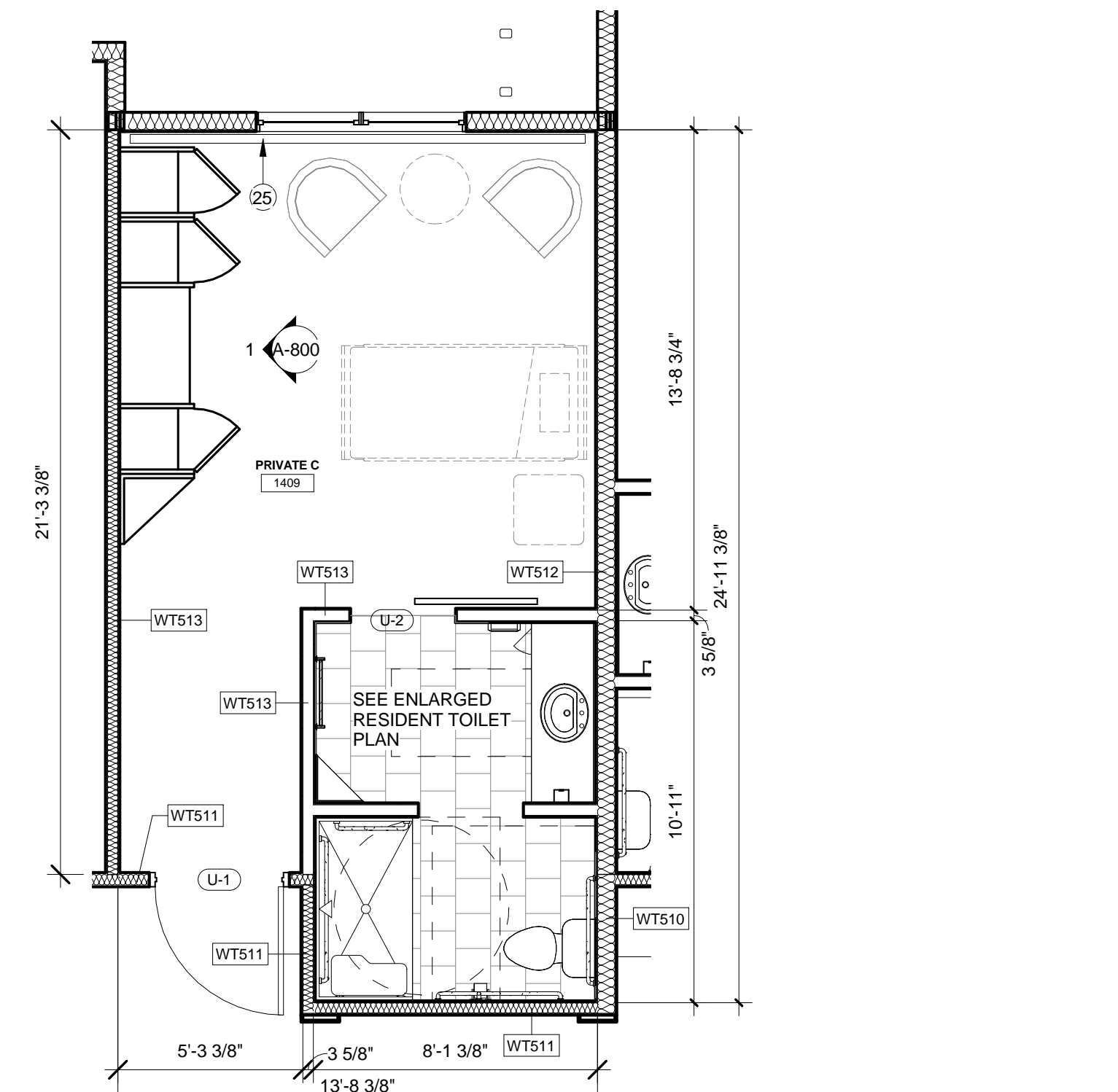
RESIDENT UNIT PLANS

A-230

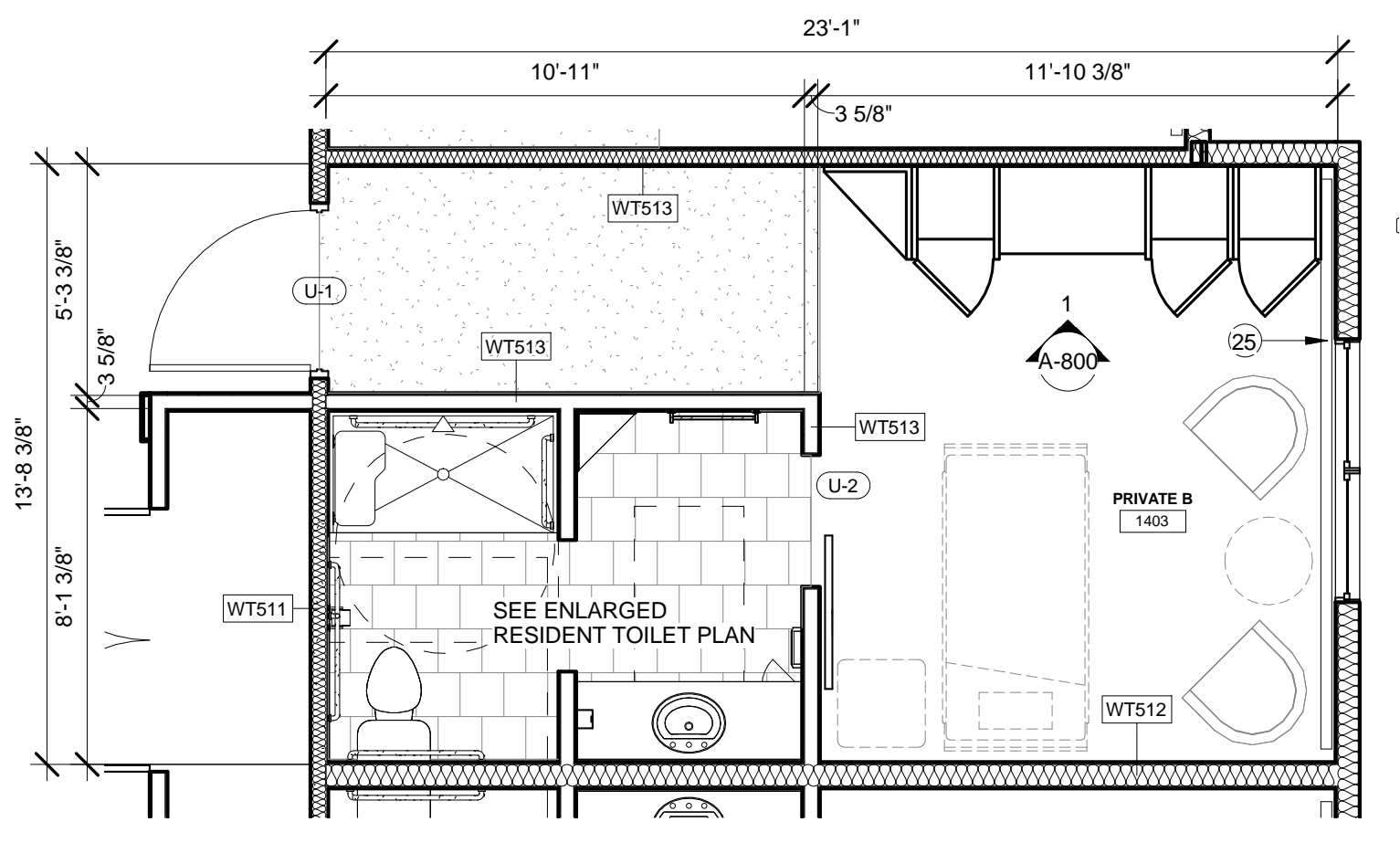
DRAWN BY: Author



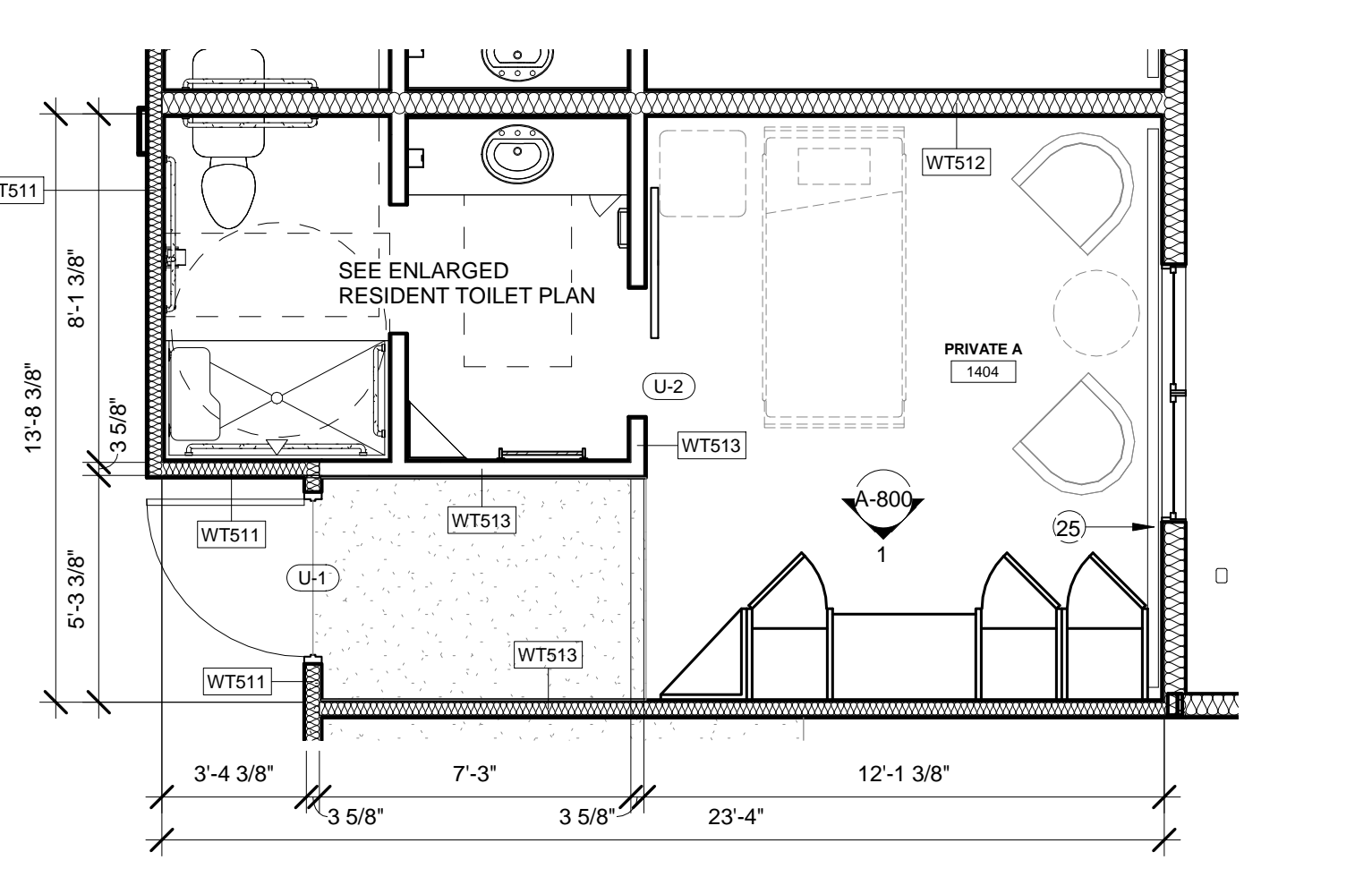
4 ENLARGED RESIDENT UNIT D
SCALE: 1/4" = 1'-0"



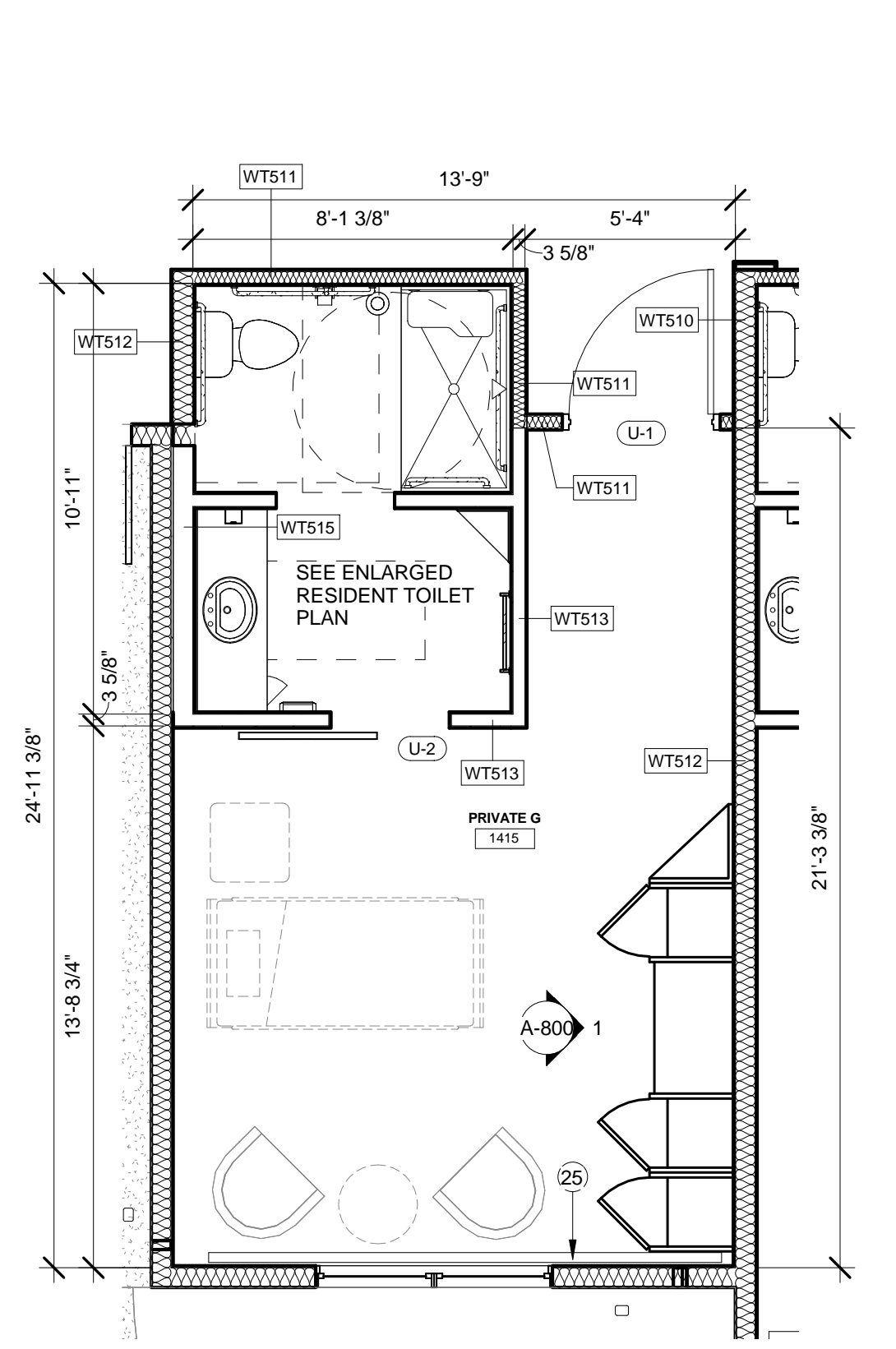
3 ENLARGED RESIDENT UNIT C
SCALE: 1/4" = 1'-0"



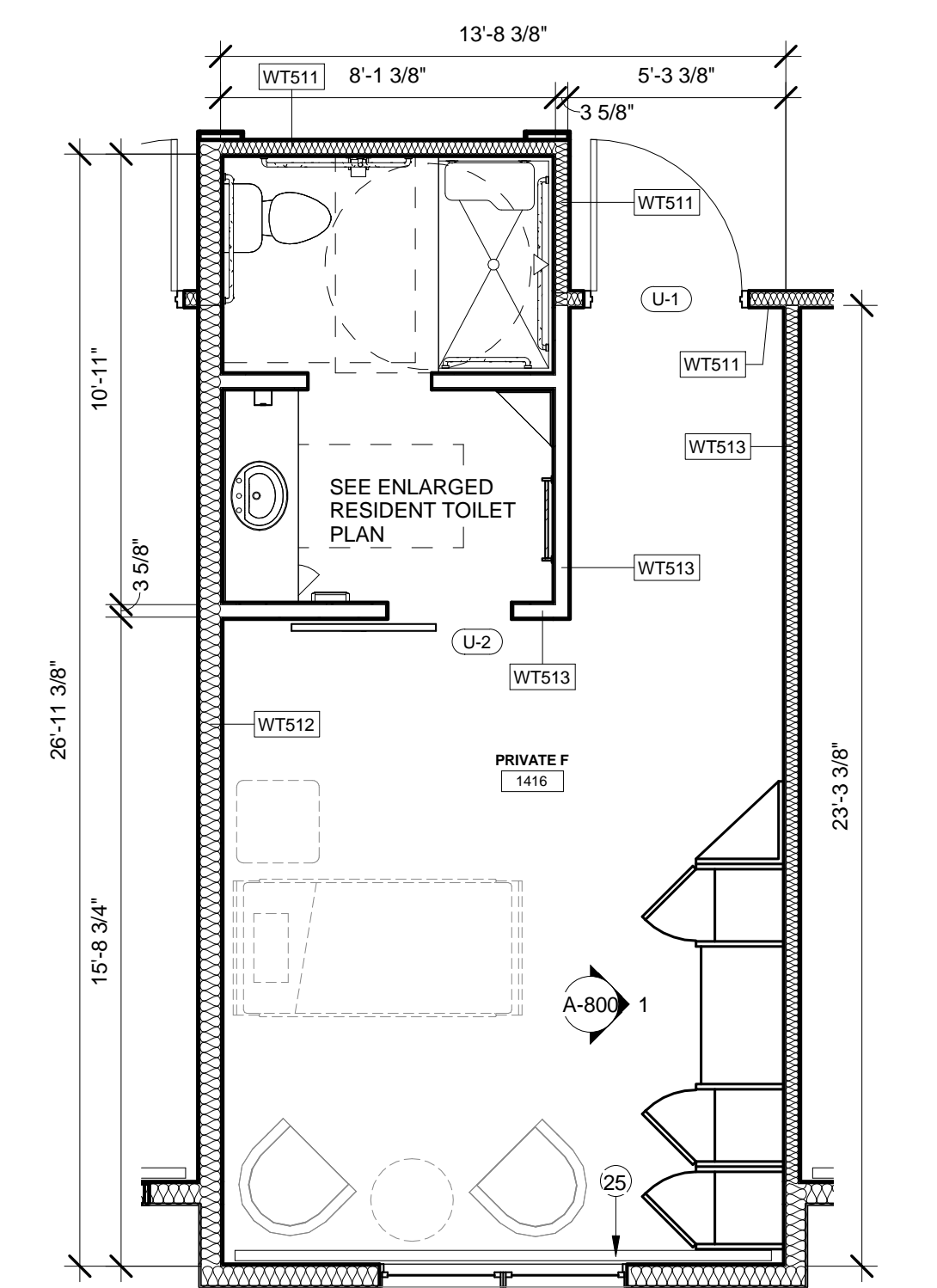
2 ENLARGED RESIDENT UNIT B
SCALE: 1/4" = 1'-0"



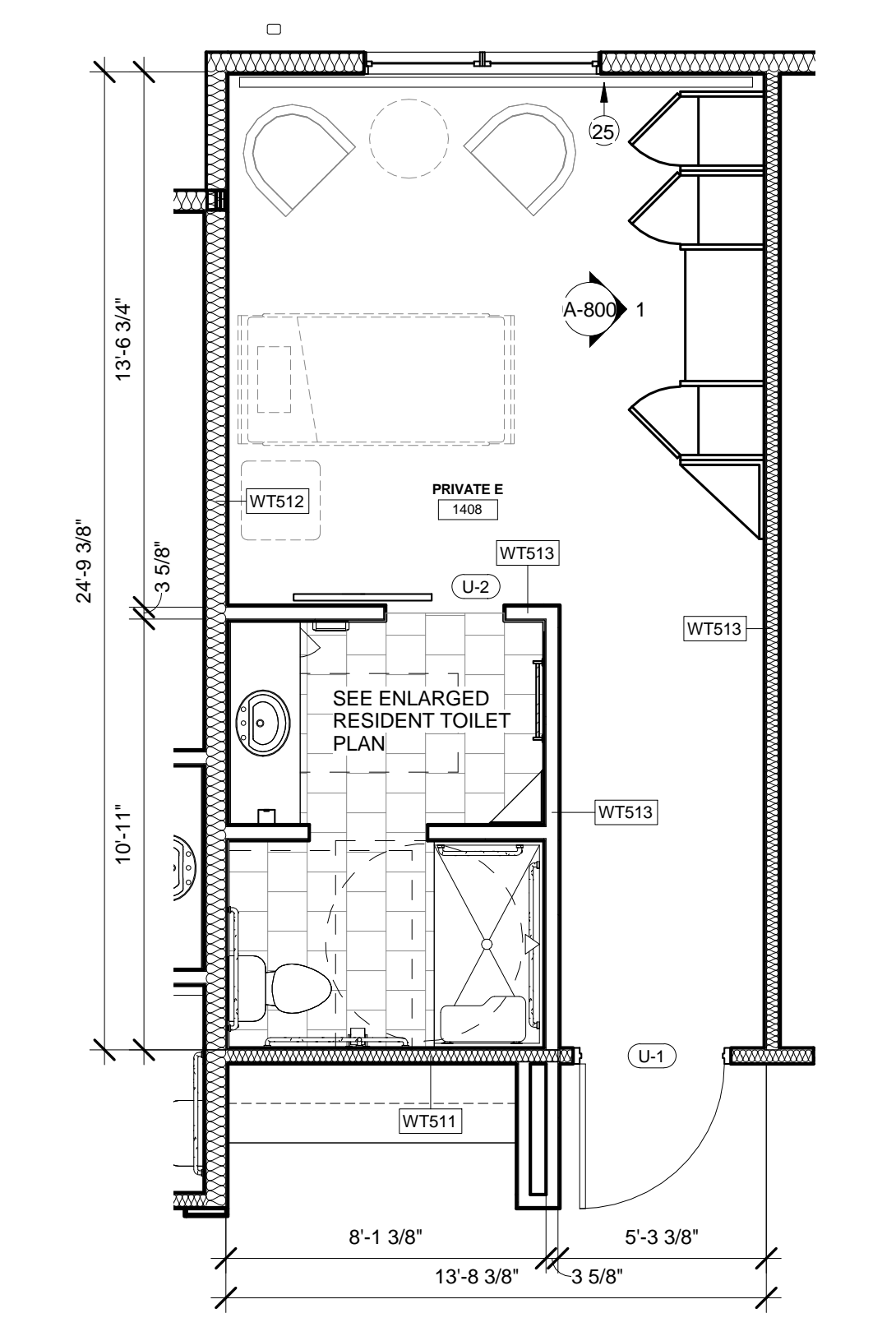
1 ENLARGED RESIDENT UNIT A
SCALE: 1/4" = 1'-0"



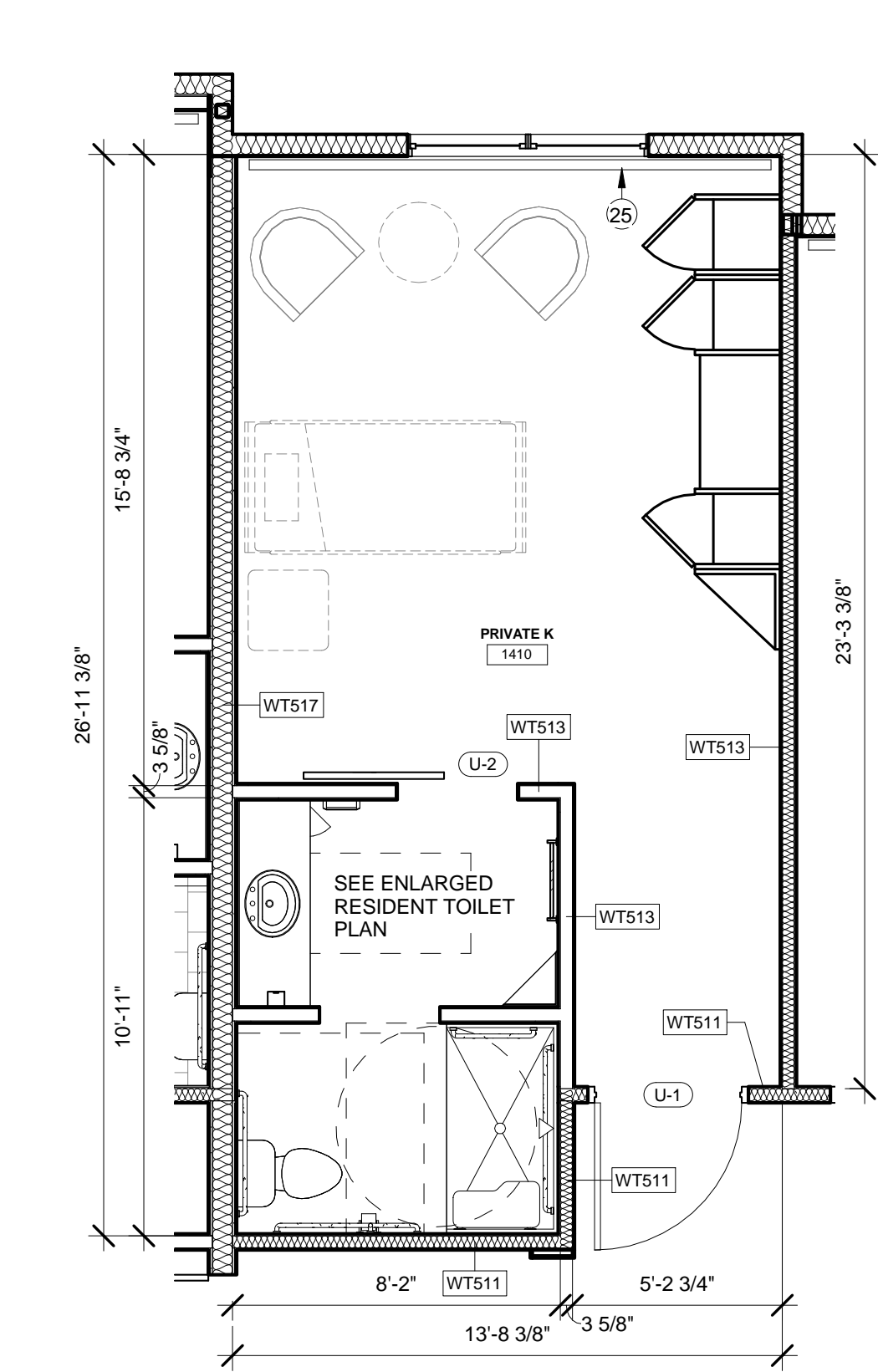
7 ENLARGED RESIDENT UNIT G
SCALE: 1/4" = 1'-0"



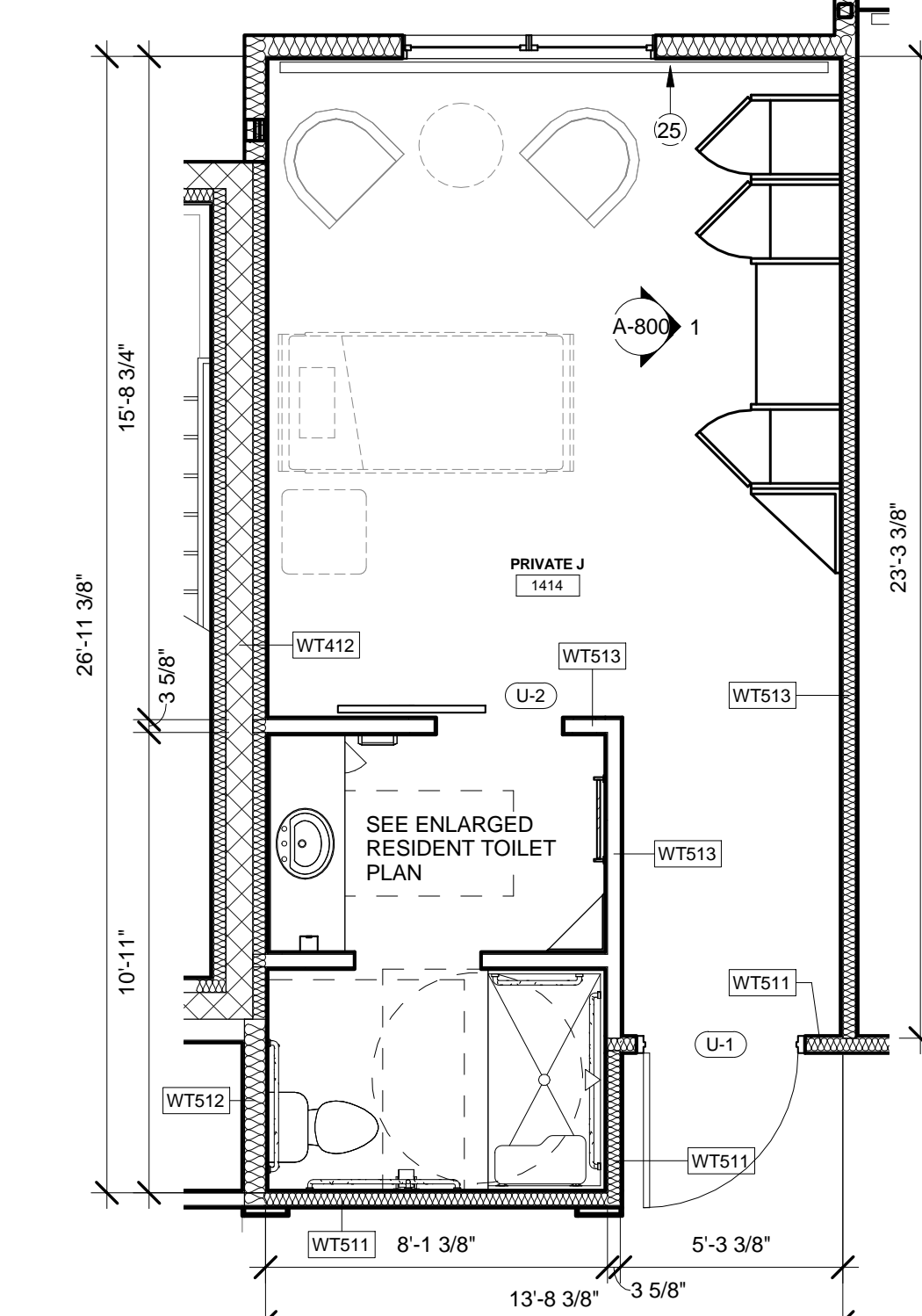
6 ENLARGED RESIDENT UNIT F
SCALE: 1/4" = 1'-0"



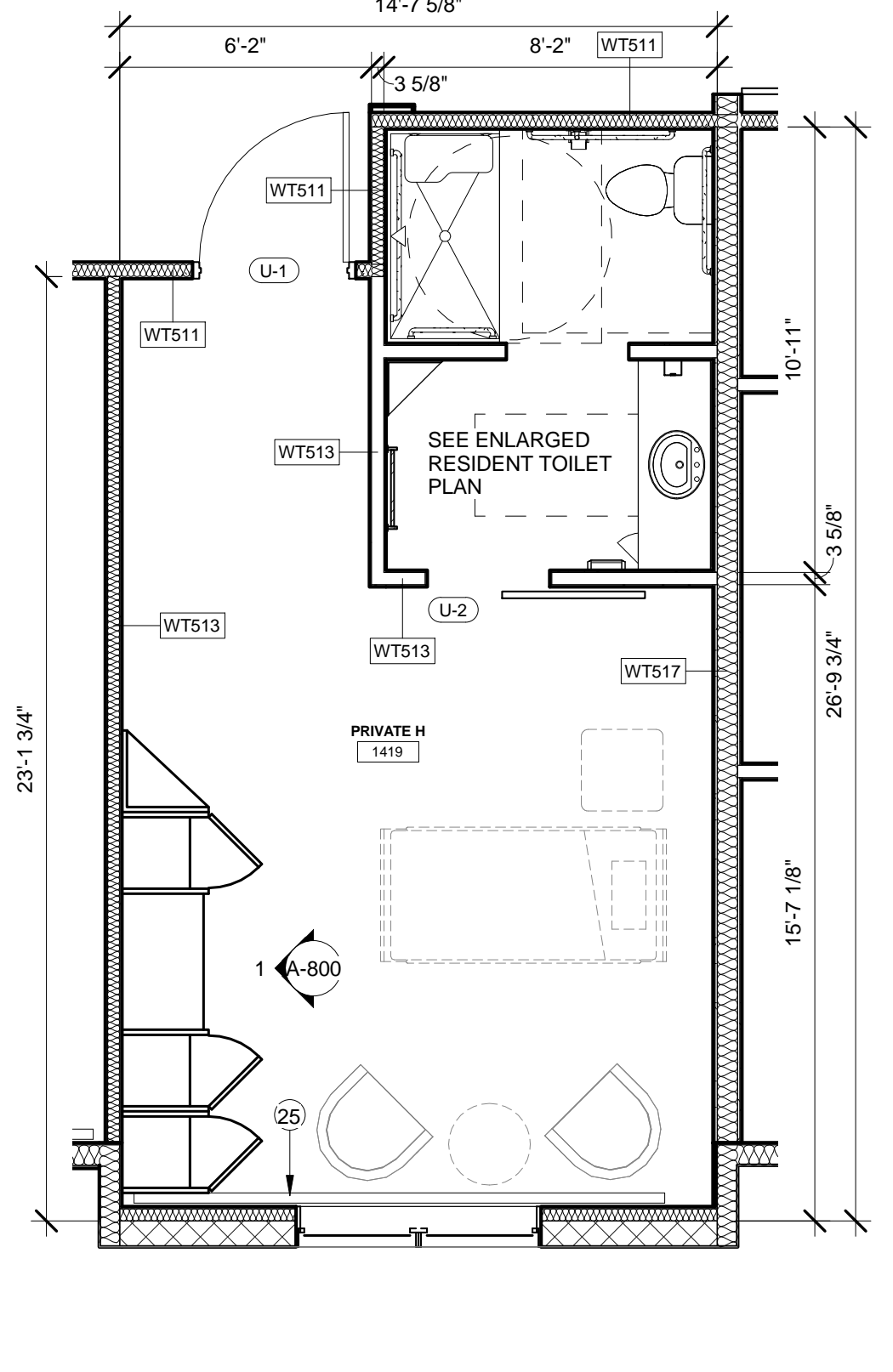
5 ENLARGED RESIDENT UNIT E
SCALE: 1/4" = 1'-0"



10 ENLARGED RESIDENT UNIT K
SCALE: 1/4" = 1'-0"



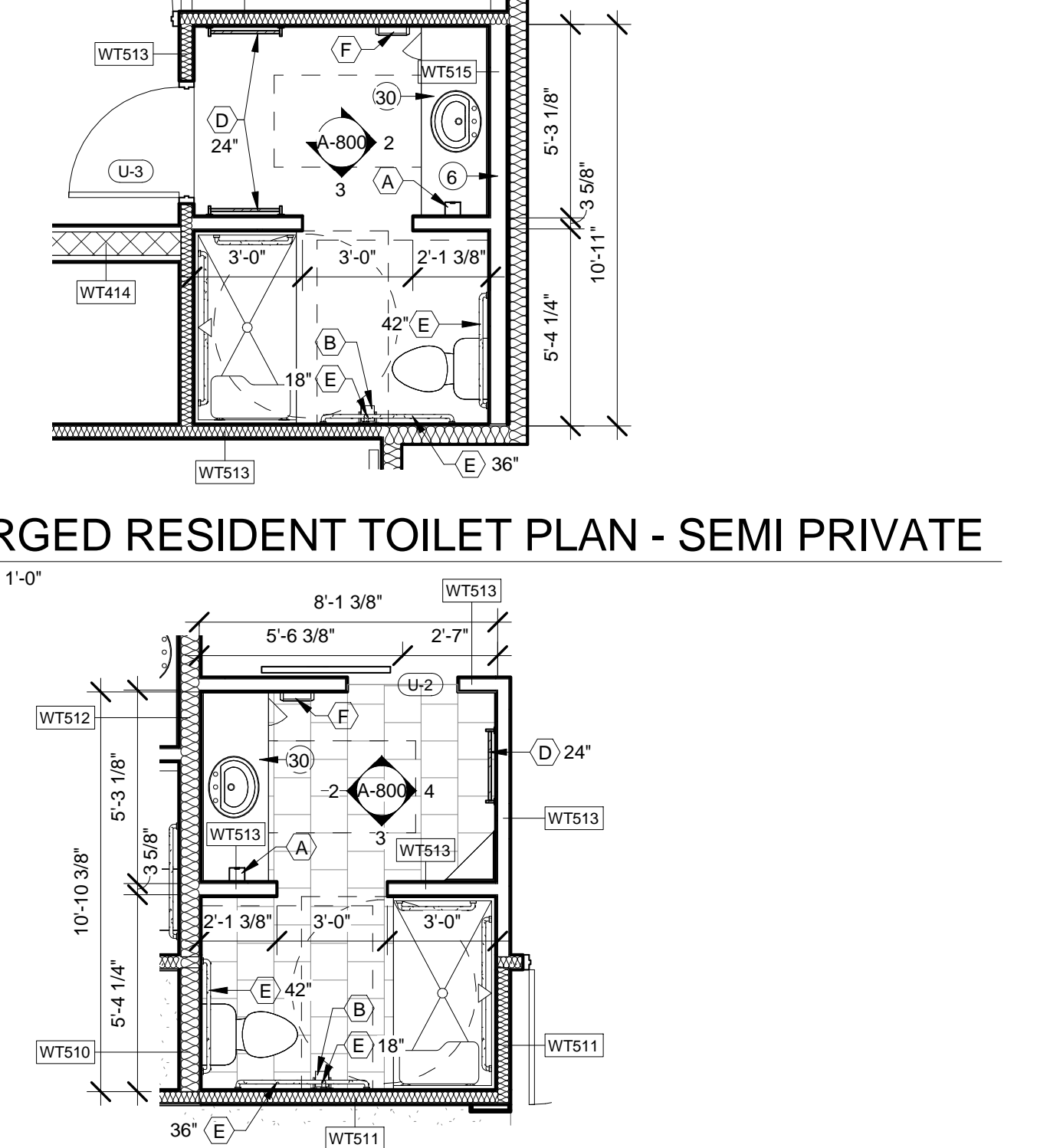
9 ENLARGED RESIDENT UNIT J
SCALE: 1/4" = 1'-0"



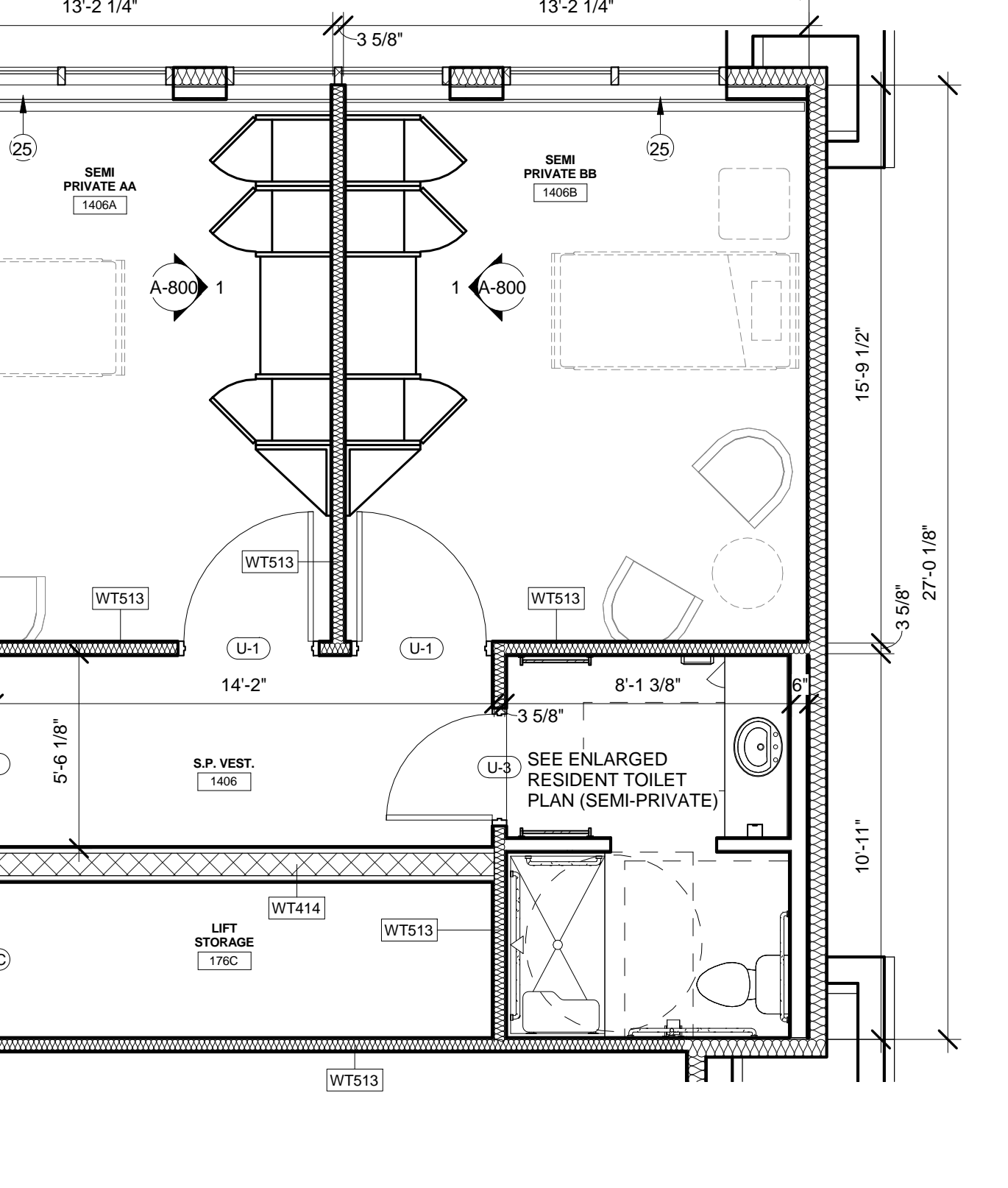
8 ENLARGED RESIDENT UNIT H
SCALE: 1/4" = 1'-0"



13 ENLARGED RESIDENT TOILET PLAN - SEMI PRIVATE
SCALE: 1/4" = 1'-0"



12 ENLARGED RESIDENT TOILET PLAN
SCALE: 1/4" = 1'-0"



11 ENLARGED RESIDENT UNIT AA & BB- SEMI-PRIVATE
SCALE: 1/4" = 1'-0"