

**Owner:**  
 Campbell County Memorial Hospital  
 501 South Burma Ave.  
 Gillette, WY 82716  
 P.O. Box 3011  
 Gillette, WY 82717  
 Ph. 307.688.1000

**Civil Engineer:**  
 PCA Engineering, Inc.  
 P.O. Box 2185  
 4506 Wigwam Blvd.  
 Gillette, WY 82718  
 Ph. 307.687.0800  
 Contact: Clark Sanders

**Structural Engineer:**  
 Jirsa Hedrick & Associates  
 7000 E. Bellevue Ave., Suite 250  
 Greenwood Village, CO 80111  
 Ph. 303.839.1963  
 Contact: Steve Jirsa

**Mechanical/Plumbing Engineer:**  
 Given & Associates, Inc.  
 735 S. Xenon Court, Suite 201  
 Lakewood, CO 80228  
 Ph. 303.716.1270  
 Contact: Jeff Given

**Electrical Engineer:**  
 Alber Engineering  
 5173 Oak Hollow Drive  
 Morrison, CO 80465  
 Ph. 303.736.2739  
 Contact: Jerry Alber

**Interior Design:**  
 LBA Interiors  
 5650 DTC Parkway, Suite 100  
 Englewood, CO 80111  
 Ph. 303.773.0436  
 Contact: Mary Lou Parham

**Food Service:**  
 United Restaurant Supply, Inc.  
 725 Clark Place  
 Colorado Springs, CO 80915  
 Ph. 719.574.3220  
 Contact: Jon Bluhm

**Landscape Architect:**  
 Four Front Design, Inc.  
 517 7th Street  
 Rapid City, SD 57701  
 Ph. 605.342.9470  
 Contact: Eirik Heikes

**FLOOR PLAN GENERAL NOTES:**

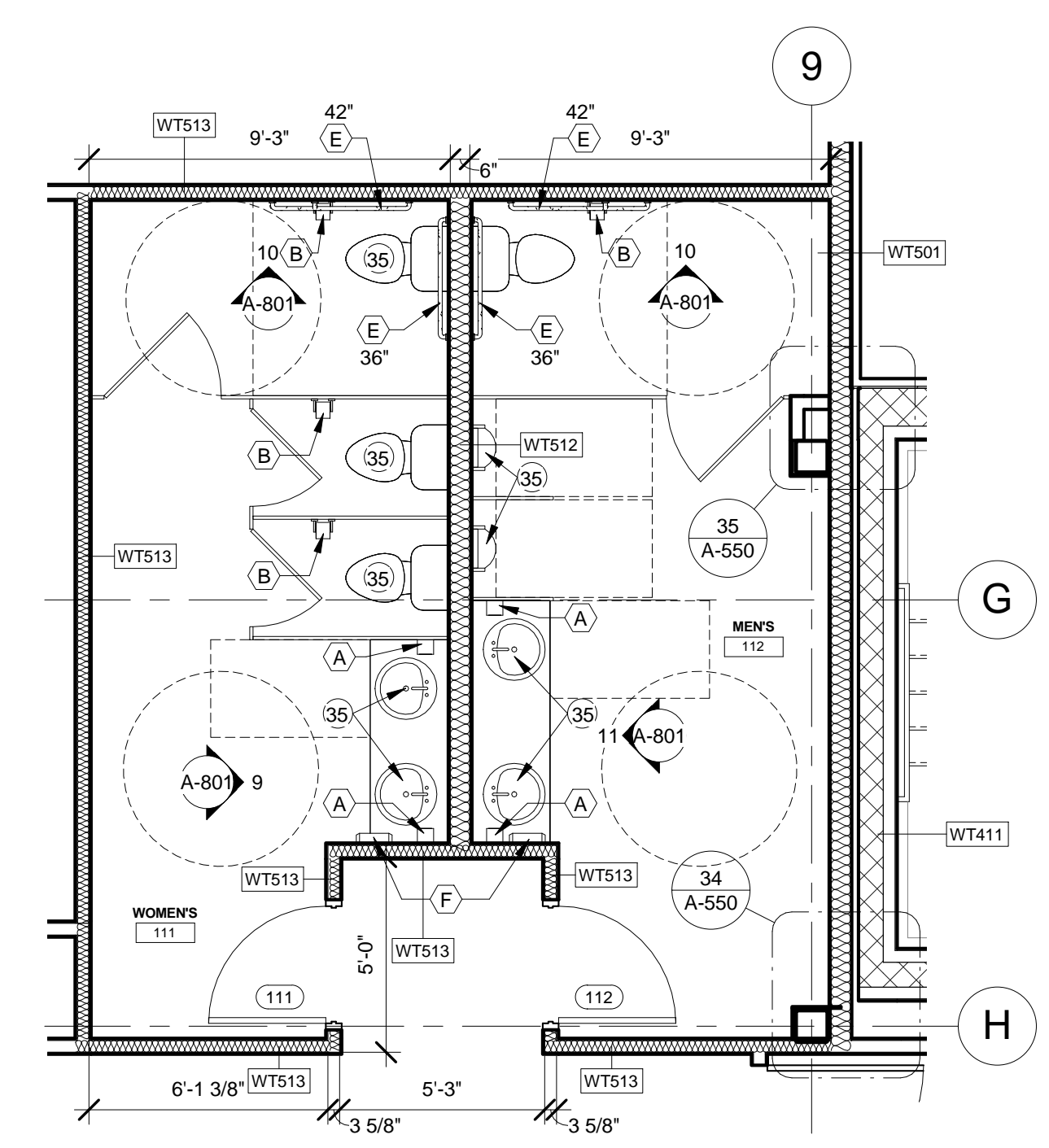
- ALL PARTITION WALLS AND EXTERIOR WALLS ARE DIMENSIONED STUD TO STUD UNLESS NOTED OTHERWISE.
- REFER TO SHEET A-600 FOR CONSTRUCTION OF WALL ASSEMBLIES.
- ALL EXTERIOR WALLS TO BE WT501 & WT502 UNLESS OTHERWISE NOTED.
- ALL GYPSUM BOARD ADJACENT TO SHOWERS & TUBS IS TO BE MOISTURE/ MOLD RESISTANT (FIBEROCK AQUA-TOUGH INTERIOR PANELS OR APPROVED EQUAL), COORDINATE WITH ASSEMBLY TYPE WITH REGARDS TO FIRE RATING.
- GRIDLINES FALL ON FACE OF STUD. TYP.
- REFER TO A-900 SERIES FOR DOOR SCHEDULE
- REFER TO A-900 SERIES FOR WINDOW SCHEDULE
- REFER TO INTERIOR WALL AND FLOOR FINISH PLANS FOR FINISH INFORMATION
- INTERIOR DOORS TO BE FRAMED 4" FROM ADJACENT WALL TYP., U.O.N.
- PROVIDE BLOCKING AT ALL EXTERIOR WINDOWS FOR INSTALLATION OF WINDOW COVERINGS. BLOCKING TO BE MINIMUM 4"x4" AT UPPER CORNERS OF GYPSUM BOARD OPENINGS FOR WINDOWS, LOCATED ABOVE AND TO THE OUTSIDE OF THE OPENINGS.
- CHAIRRAIL, RE: INTERIOR WALL FINISH PLAN FOR LOCATIONS
- CORRIDOR HANDRAIL, RE: INTERIOR WALL FINISH PLAN FOR LOCATIONS
- SEE SHEETS A-530 FOR ADDITIONAL DIMENSIONS FOR THE ELEVATOR SHAFT AND OPENING SIZES.
- REFER TO SHEET A-250 FOR ROOF PLAN.
- REFER TO FOOD SERVICE DRAWINGS FOR KITCHEN EQUIPMENT LIST, ETC.
- SEE SHEETS A-230 FOR ENLARGED RESIDENT UNITS AND RESIDENT BATHROOM FLOOR PLANS
- DETAILS FOR HANDRAIL TRANSITIONS RE: SHEET A-851.
- ALL DIMENSIONS ARE TO CENTERLINE OF WINDOW & DOORS UNLESS NOTED OTHERWISE.

**FLOOR PLAN KEY NOTES:**

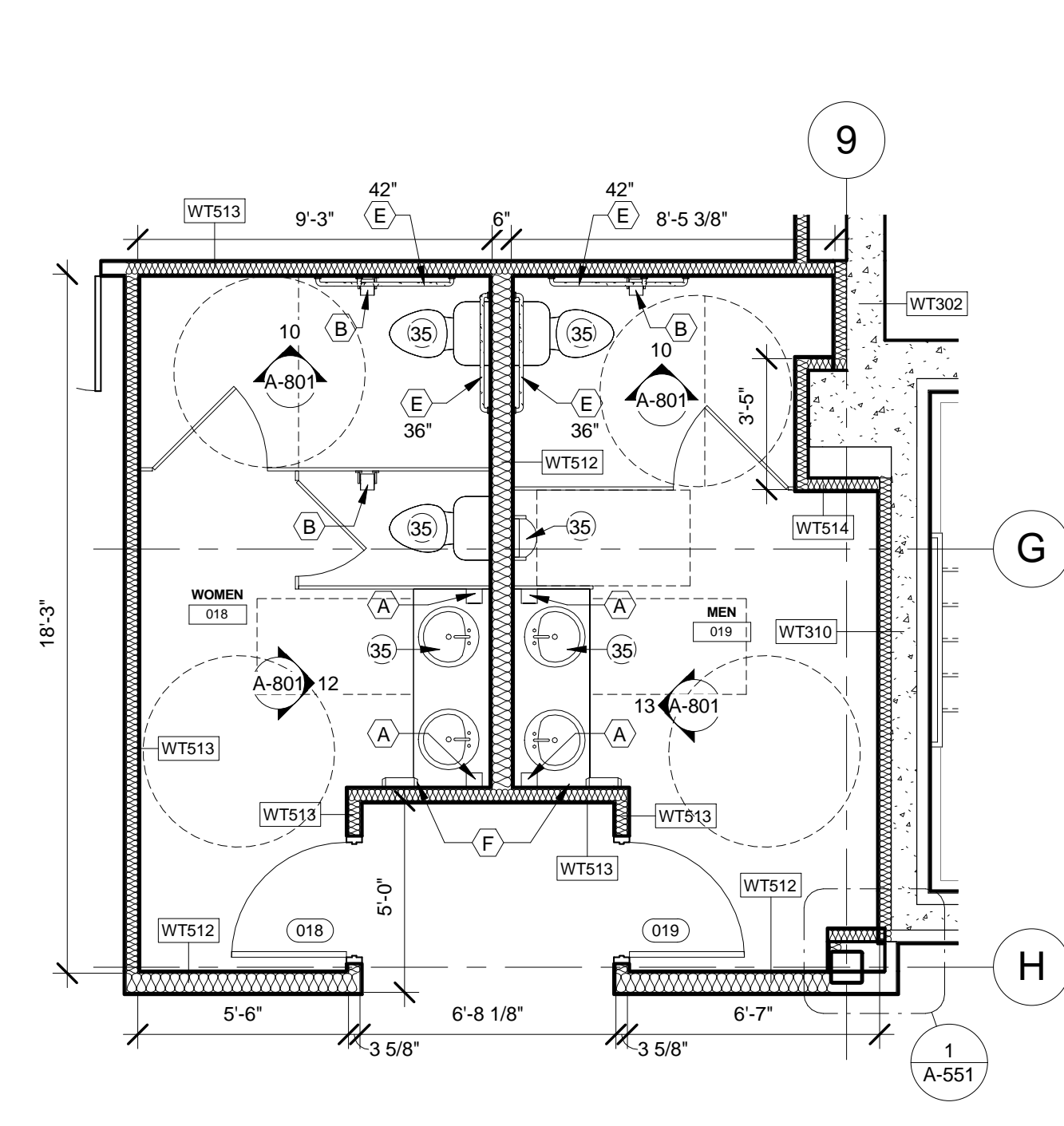
- FURR-OUT EXTERIOR WALL WITH EXTRA LAYER OF GYP. BD. TO ALIGN WITH INTERIOR WALL.
- REFER TO SHEETS A-230 FOR ENLARGED RESIDENT ROOM & RESIDENT BATHROOM PLANS.
- GAS FIREPLACE, RE: SPECIFICATIONS
- WASHING MACHINE, RE: SPECIFICATIONS
- DRYER, RE: SPECIFICATIONS
- ADDITIONAL FURRED OUT WALL AT PLUMBING WALL EXTERIOR
- SHELVING, RE: 9' A-851
- REFER TO ENLARGED TOILET PLAN FOR ALL TOILET ACCESSORIES.
- NOT USED
- ELEVATOR, RE: SPECIFICATIONS
- PLASTIC LAMINATE COUNTER WITH SINK AND CABINETRY
- STAFF LOCKERS, RE: SPECIFICATIONS
- PLASTIC LAMINATE COMPUTER WORKSTATION, RE: INTERIOR ELEVATION
- ELECTRIC WATER COOLERS, RE: PLUMBING
- CUSTOM BUILT-IN CASEWORK, RE: INTERIOR DESIGN DWGS
- PLASTIC LAMINATE COUNTER, RE: INTERIOR ELEVATIONS
- MOP SINK REFER TO TYPICAL ELEVATIONS 25 & 26' A-800, RE: PLUMBING
- OUTLINE OF ROOF BELOW
- REFRIGERATOR, RE: SPECIFICATIONS
- PARTIAL HEIGHT WALL, RE: INTERIOR ELEVATION.
- MEDICATION DISPENSER, BY OWNER
- ROOF HATCH LADDER RE: SPECIFICATIONS
- ADJUSTABLE SINK, RE: PLUMBING
- UNDER-COUNTER REFRIGERATOR, RE: SPECIFICATIONS
- BASEBOARD HEAT, RE: MECHANICAL
- ALIGN WALLS
- KITCHEN/ SERVERY EQUIPMENT, RE: FOOD SERVICE PLANS
- FLUSH SINK, RE: PLUMBING
- TIMECLOCK, BY OWNER
- COUNTER TOP WITH UNDERMOUNT SINK, RE: INTERIOR FINISH SPECIFICATIONS
- ROOF/ DECK DRAIN
- FURR OUT ALL CONCRETE PILASTERS WITH WT514
- FURR OUT ENTIRE ROOM WITH WT514 AS SHOWN
- DOCK LEVELER, RE: SPECIFICATIONS
- ADDITIONAL FURR OUT AT STOREFRONT WINDOWS, WT514 AS SHOWN
- FOLDING DOORS, RE: SPECIFICATIONS
- EXTERIOR RAILING, RE: SPECIFICATIONS
- ROOF ABOVE

**TOILET ACCESSORIES:**

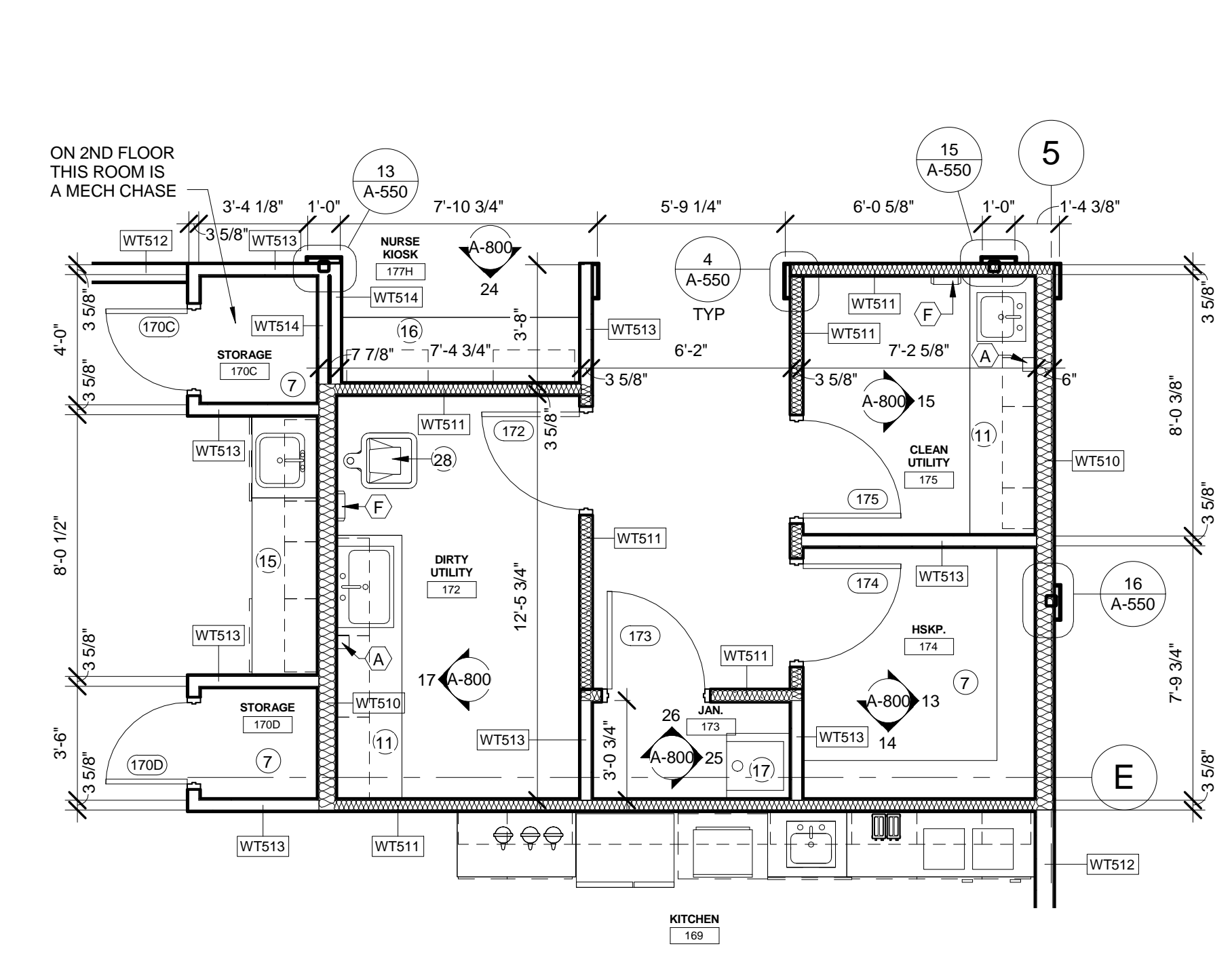
- SEE SPECIFICATION SECTION FOR ADDITIONAL INFORMATION.  
 SEE TYPICAL MOUNTING HEIGHTS DETAILS FOR INSTALLATION HEIGHTS.
- (A) SOAP DISPENSER
  - (B) TOILET TISSUE HOLDER (SINGLE)
  - (C) MIRROR: VERIFY SIZE & STYLE W/ INTERIOR ELEVATIONS (SEE SECTION 0800-GLAZING)
  - (D) TOWEL BAR, CONTRACTOR TO PROVIDE ADEQUATE BLOCKING AS REQUIRED.
  - (E) GRAB BAR: SIZE AS INDICATED ON INTERIOR ELEVATIONS, PLASTIC, REINFORCED W/ STAINLESS STEEL INSERTS AND CONCEALED FASTENERS. COLOR, WHITE. CONTRACTOR TO PROVIDE ADEQUATE BLOCKING AS REQUIRED.
  - (F) PAPER TOWEL DISPENSER
  - (G) UTILITY SHELF
  - (H) HOSE AND HOSE HOLDER
  - (J) MOP HOLDER 24"



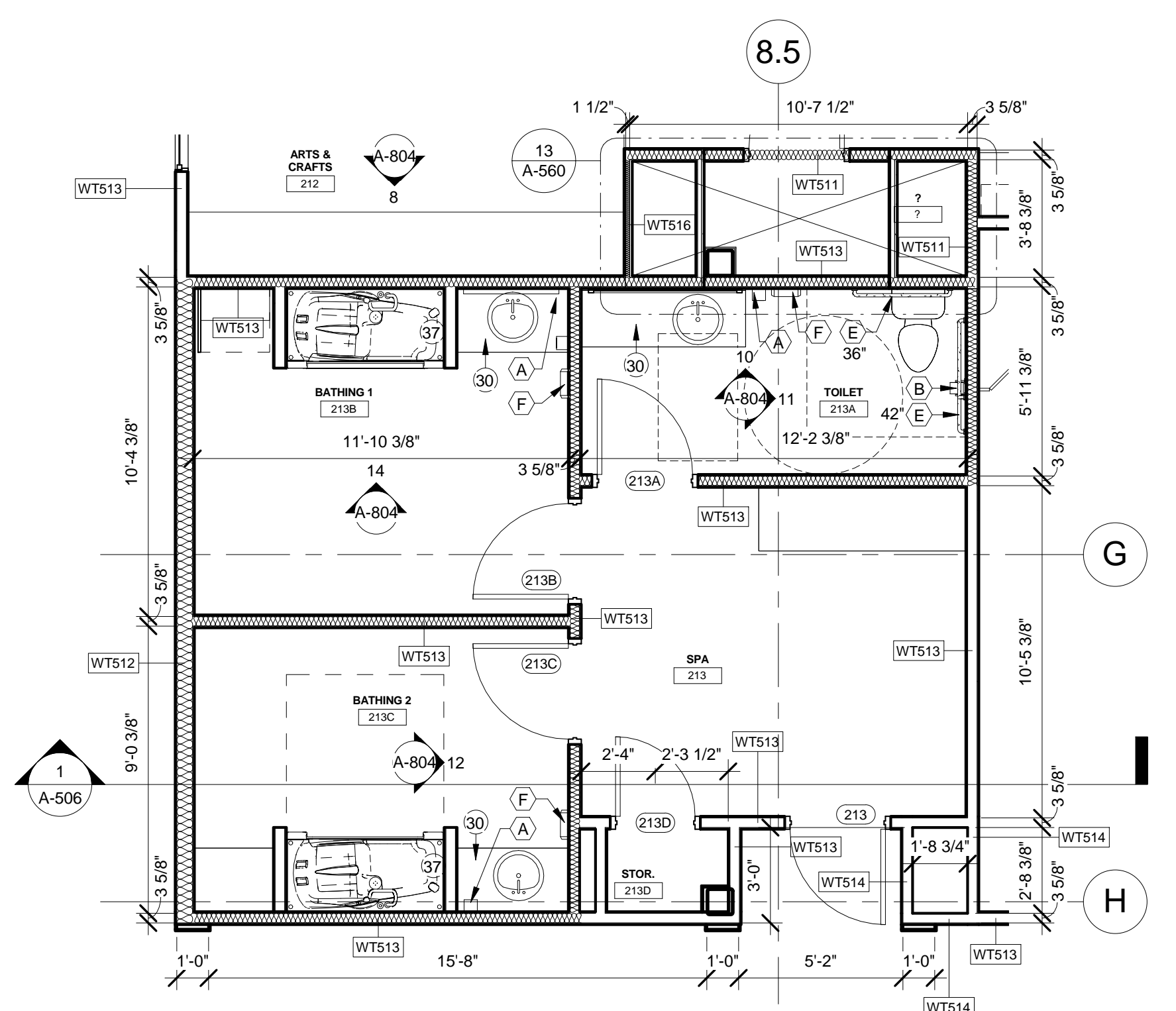
**3 ENLARGED PLAN - WOMEN 111 & MEN 112**  
 SCALE: 1/4" = 1'-0"



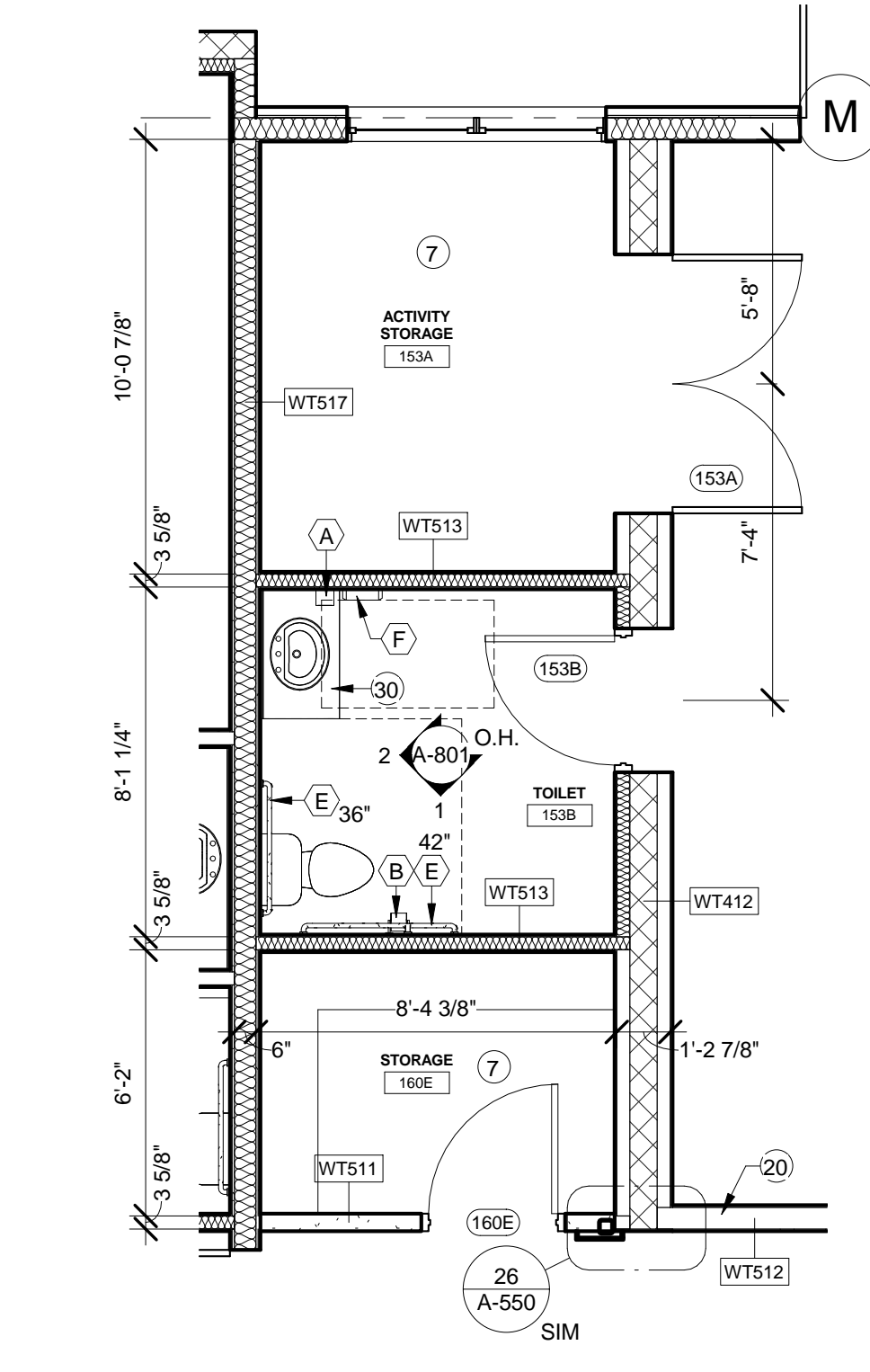
**2 ENLARGED PLAN - WOMEN 018 & MEN 019**  
 SCALE: 1/4" = 1'-0"



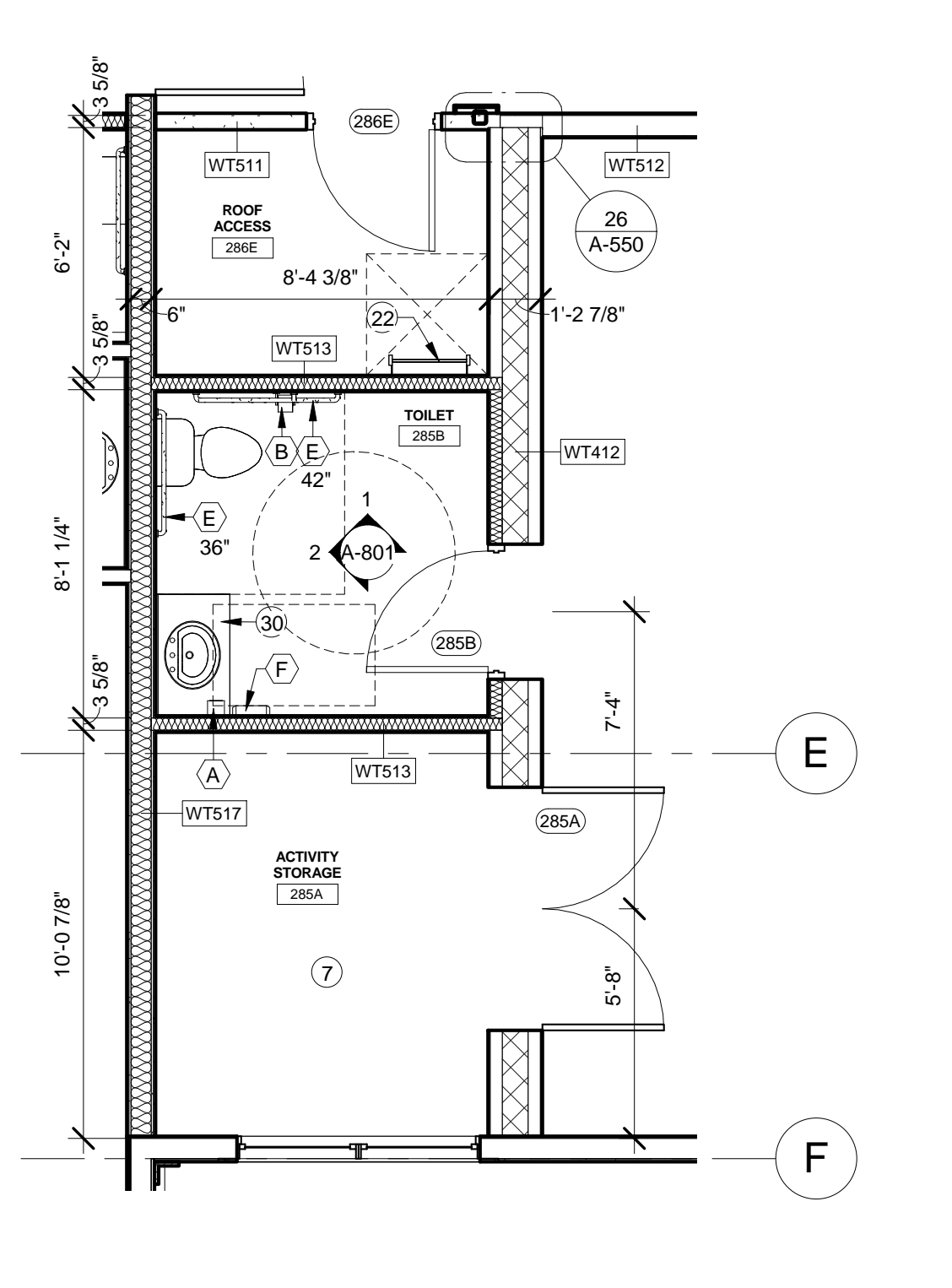
**1 ENLARGED STAFF AREA - UTILITY ROOMS, HSKP & JAN**  
 SCALE: 1/4" = 1'-0"



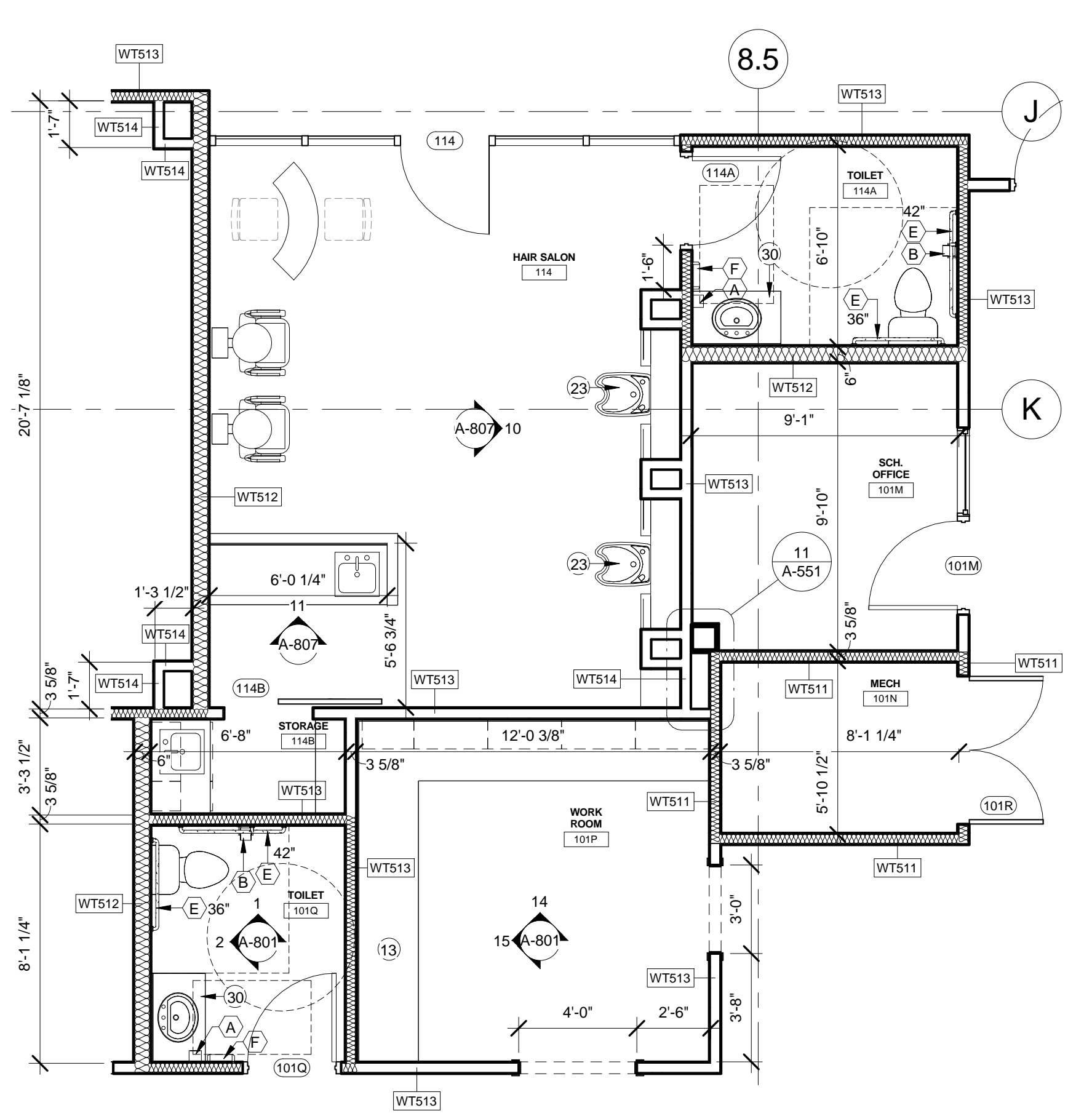
**6 ENLARGED PLAN SPA**  
 SCALE: 1/4" = 1'-0"



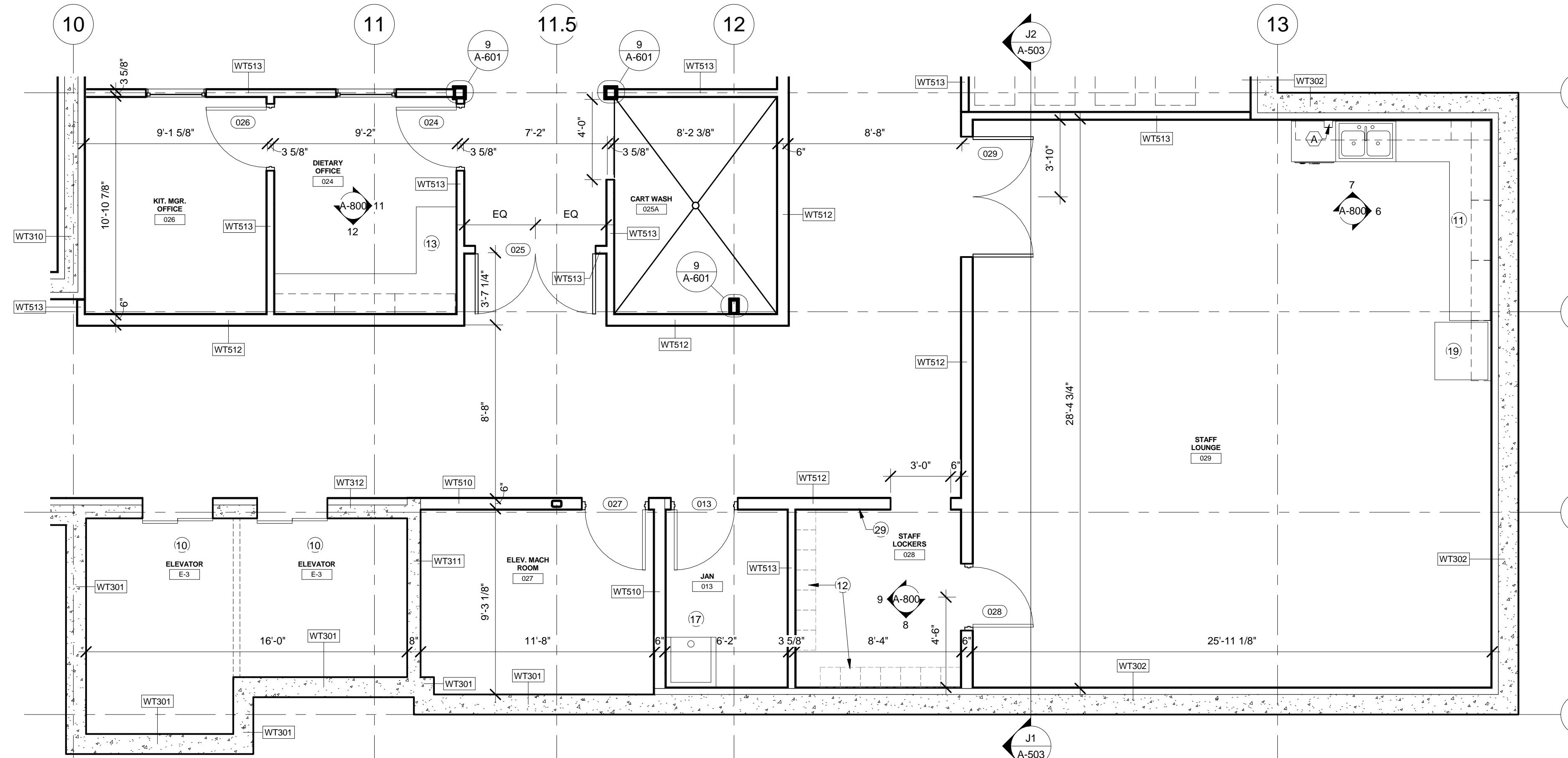
**5 ENLARGED PLAN - ACTIVITIES 153**  
 SCALE: 1/4" = 1'-0"



**4 ENLARGED PLAN - ACTIVITIES 285**  
 SCALE: 1/4" = 1'-0"



**8 ENLARGED PLAN - SALON & TOILET ROOMS**  
 SCALE: 1/4" = 1'-0"



**7 ENLARGED BASEMENT - STAFF AREA**  
 SCALE: 1/4" = 1'-0"

NOTICE: These documents are instruments of professional service and information contained therein is incomplete unless used in conjunction with Lantz-Boggio's interpretations, designs, observations and administrative. Use or reproduction of these documents in whole or part without Lantz-Boggio's consent is in violation of common law, copyrights, statutory and other reserved rights. Refer to Act 17 U.S.C., par. 511 (1991), which preempts state and local public records acts. Refer to Act 17 U.S.C., par. 301 (1991).

Seal:

Key Plan:

LBA Project Number: 2012.3000  
 Date: October 31, 2013

**ENLARGED PLANS**

**A-238**