

**Owner:**  
 Campbell County Memorial Hospital  
 501 South Burma Ave.  
 Gillette, WY 82716  
 P.O. Box 3011  
 Gillette, WY 82717  
 Ph. 307.688.1000

**Civil Engineer:**  
 PCA Engineering, Inc.  
 P.O. Box 2185  
 4506 Wigwam Blvd.  
 Gillette, WY 82718  
 Ph. 307.687.0800  
 Contact: Clark Sanders

**Structural Engineer:**  
 Jirsa Hedrick & Associates  
 7000 E. Bellevue Ave. Suite 250  
 Greenwood Village, CO 80111  
 Ph. 303.839.1963  
 Contact: Steve Jirsa

**Mechanical/Plumbing Engineer:**  
 Given & Associates, Inc.  
 735 S. Xenon Court, Suite 201  
 Lakewood, CO 80228  
 Ph. 303.716.1270  
 Contact: Jeff Given

**Electrical Engineer:**  
 Alber Engineering  
 5173 Oak Hollow Drive  
 Morrison, CO 80465  
 Ph. 303.736.2739  
 Contact: Jerry Alber

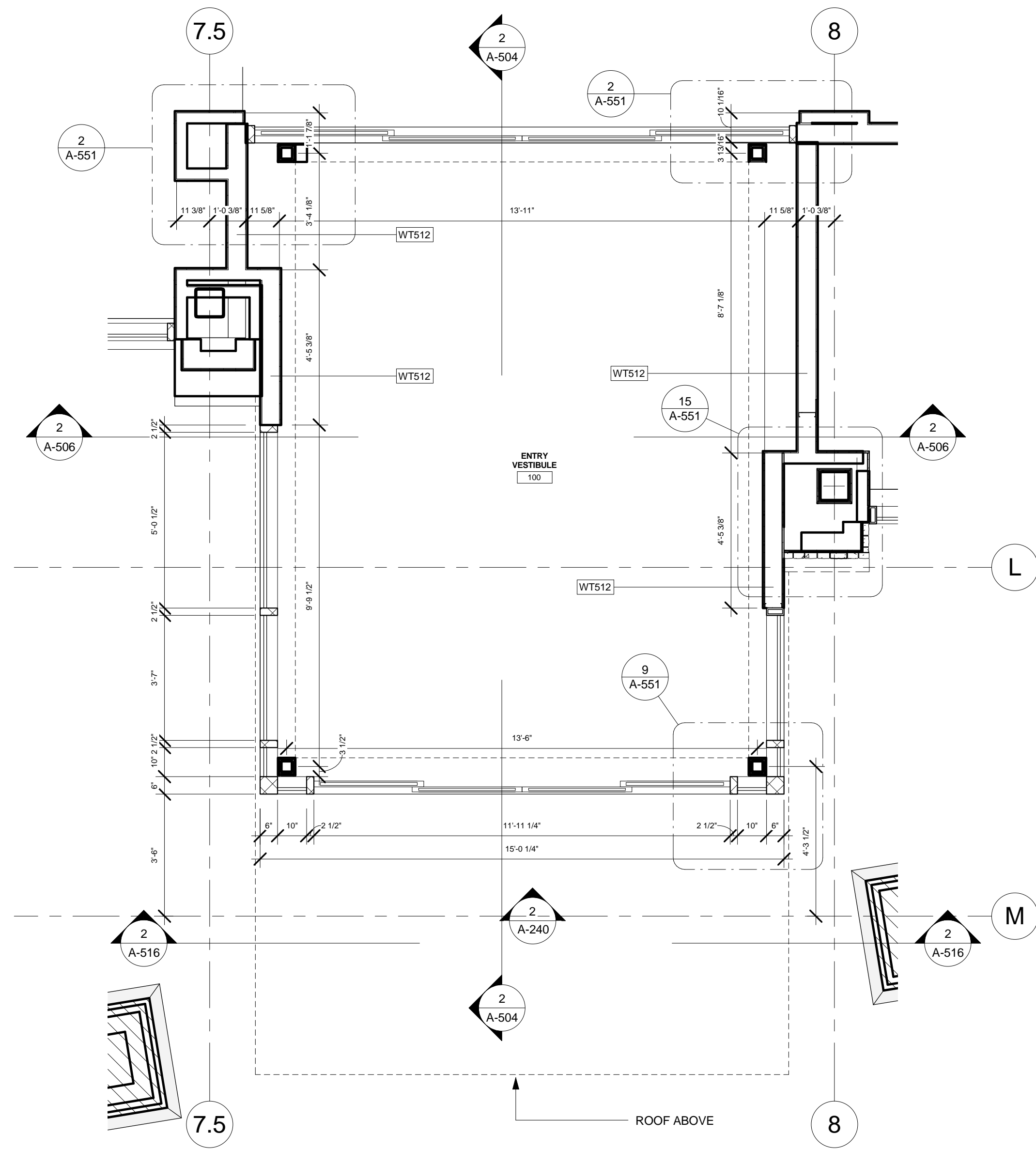
**Interior Design:**  
 LBA Interiors  
 5650 DTC Parkway, Suite 100  
 Englewood, CO 80111  
 Ph. 303.773.0436  
 Contact: Mary Lou Parham

**Food Service:**  
 United Restaurant Supply, Inc.  
 725 Clark Place  
 Colorado Springs, CO 80915  
 Ph. 719.574.3220  
 Contact: Jon Bluhm

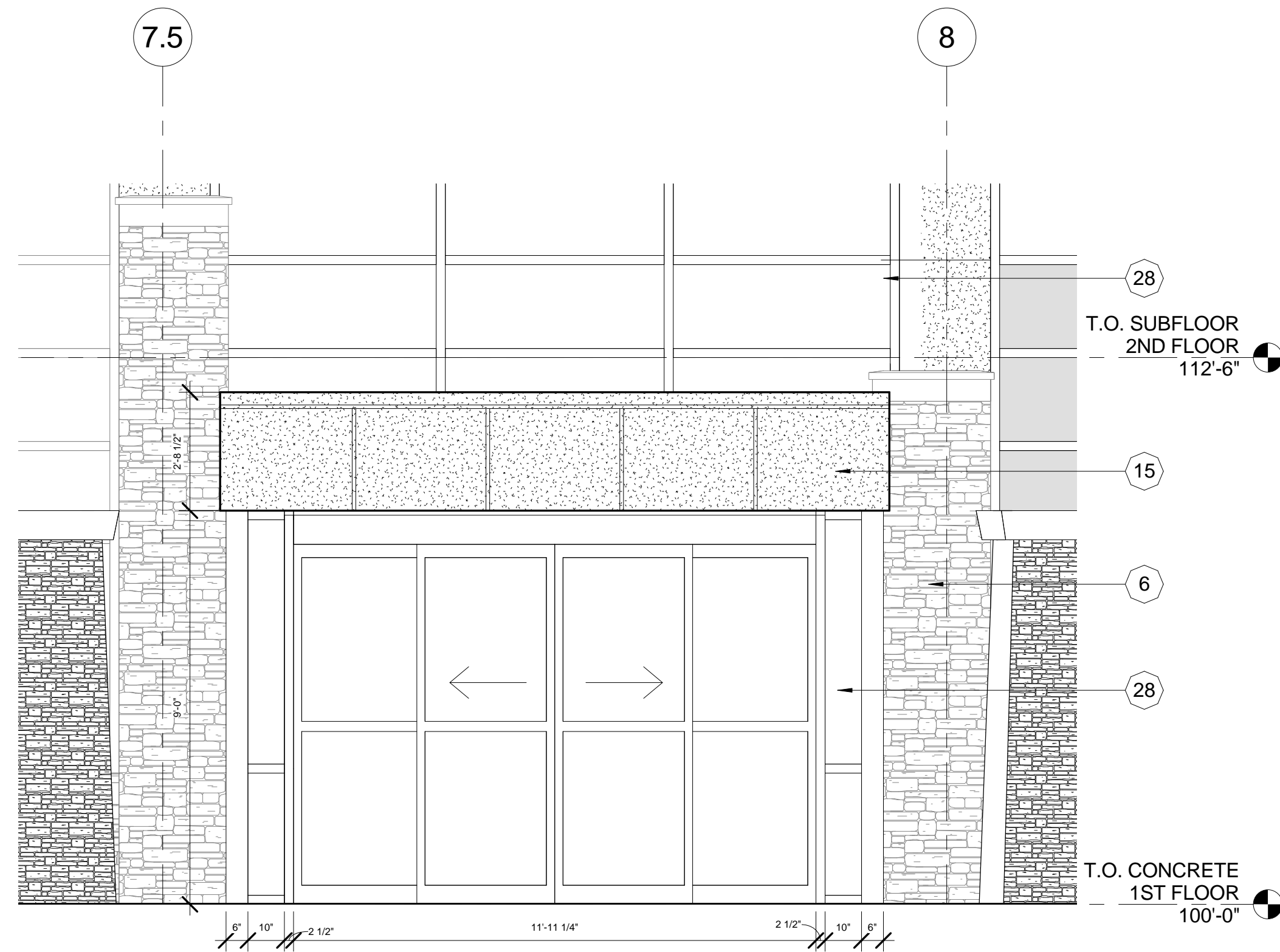
**Landscape Architect:**  
 Four Front Design, Inc.  
 517 7th Street  
 Rapid City, SD 57701  
 Ph. 605.342.9470  
 Contact: Eirik Heikes

**EXTERIOR ELEVATIONS KEY NOTE**

Label	Code	Description
1	03 3000.01	CAST IN PLACE CONCRETE. WALL. RE: STRUCTURAL
2	04 2000.01	CONCRETE BLOCK. PAINTED
3	04 2000.03	PRE-FACED CONCRETE BLOCK. STACKED. RETAINING WALL. RE: A-100
4	04 2000.04	SIMULATED CAST STONE BLOCK. RE: 7/A-540
5	04 2000.50	CONTROL JOINT
6	04 4301.01	STONE MASONRY VENEER SYSTEM. RE: SPECIFICATIONS
7	05 5000.04	METAL FABRICATION - GUARD RAIL. PAINTED. RE: SPECIFICATIONS
8	05 5000.05	METAL FABRICATION - BOLLARD. PAINTED
9	06 6100.01	SIMULATED STONE FABRICATION. STONE VENEER. RE: SPECIFICATIONS
10	06 6100.02	SIMULATED STONE FABRICATION. STONE CAP. RE: SPECIFICATIONS
11	06 6100.03	SIMULATED STONE FABRICATION. STONE LINTEL. RE: SPECIFICATIONS
12	06 6100.04	SIMULATED STONE FABRICATION. STONE SILL. RE: SPECIFICATIONS
13	07 3113.01	ASPHALT SHINGLE SYSTEM. RE: SPECIFICATIONS
14	07 4213.01	METAL WALL PANEL SYSTEM. MATCH COLOR/FINISH OF CURTAIN WALL
15	07 4264.01	METAL COMPOSITE MATERIAL (MCM) WALL PANEL SYSTEM. MATCH COLOR/FINISH OF CURTAIN WALL
16	07 4646.01	FIBER CEMENT SIDING SYSTEM. W/ VERTICAL FIBER CEMENT BATTENS. PAINTED
17	07 4646.01	FIBER CEMENT SIDING SYSTEM. LAP SIDING. PAINTED
18	07 4646.01	FIBER CEMENT SIDING SYSTEM. COLUMN WRAP. PAINTED
19	07 4646.02	FIBER CEMENT FACIA BOARD. 5/4"x6" TRIM OVER 5/4"x12" TRIM. PAINTED
20	07 4646.03	FIBER CEMENT SIDING TRIM. DECORATIVE BEAM. PAINTED. RE: 2/A-540
21	07 4646.03	FIBER CEMENT TRIM. PAINTED
22	07 4646.04	METAL TRIM SYSTEM. PAINTED
23	07 4646.05	FIBER CEMENT SOFFIT PANEL. PAINTED
24	07 5400.01	THERMOPLASTIC MEMBRANE ROOFING SYSTEM. RE: SPECIFICATIONS
25	07 7123.03	MANUFACTURED ALUMINUM SHEET METAL GUTTER AND DOWNSPOUT SYSTEM
26	08 1113.01	HOLLOW METAL DOOR/FRAME (HM). RE: DOOR SCHEDULE & SPECIFICATIONS
27	08 3323.01	OVERHEAD COILING DOOR (OCD). PAINTED. RE: SPECIFICATIONS
28	08 4413.01	GLAZED ALUMINUM CURTAIN WALL SYSTEM. RE: SPECIFICATIONS
29	08 5313.01	VINYL WINDOW. RE: WINDOW SCHEDULE & SPECIFICATIONS
30	11 1313.01	LOADING DOCK BUMPER UNIT. PAINTED. RE: SPECIFICATIONS
31	111319.01	LOADING DOCK LEVELER ASSEMBLY. PAINTED. RE: SPECIFICATIONS
32	32 3136.05	HORIZONTAL SWING GATE. PAINTED
33		LANDSCAPED SLOPE. RE: CIVIL & LANDSCAPE DRAWINGS
34		CHIMNEY. RE: 1/A-541



**1 VESTIBULE AT TOWN CENTER**  
 SCALE: 3/8" = 1'-0"



**2 ENTRY VESTIBULE ELEVATION**  
 SCALE: 3/8" = 1'-0"

No.	Date	Description

Seal:



Key Plan:

LBA Project Number: 2012.3000  
 Date: October 31, 2013

**VESTIBULE AT TOWN CENTER**

**A-240**

NOTICE: These documents are instruments of professional service and information contained therein is incomplete unless used in conjunction with Lantz-Boggio's interpretations, decisions, observations and administrations. Use or reproduction of these documents in whole or part without Lantz-Boggio's consent is in violation of common law, copyrights, statutory and other reserved rights. Refer to Act 17 U.S.C., par. 511 (1991), which prompts state and local public records act. Refer to Act 17 U.S.C., par 301 (1991).