

NOTICE: These documents are instruments of professional service and information contained therein is incomplete unless used in conjunction with Lantz-Boggio's interpretations, decisions, observations and administrative. Use or reproduction of these documents in whole or part without Lantz-Boggio's consent is in violation of common law, copyrights, statutory and other reserved rights. Refer to Act 17 U.S.C., par. 511 (1991), which preempts state and local public records act. Refer to Act 17 U.S.C., par. 301 (1991).

Owner:
 Campbell County Memorial Hospital
 501 South Burma Ave.
 Gillette, WY 82716
 P.O. Box 3011
 P.O. Box 3011
 Gillette, WY 82717
 Ph. 307.688.1000

Civil Engineer:
 PCA Engineering, Inc.
 P.O. Box 2185
 4506 Wigwam Blvd.
 Gillette, WY 82718
 Ph. 307.687.0800
 Contact: Clark Sanders

Structural Engineer:
 Jirsa Hedrick & Associates
 7000 E. Bellevue Ave. Suite 250
 Greenwood Village, CO 80111
 Ph. 303.839.1963
 Contact: Steve Jirsa

Mechanical/Plumbing Engineer:
 Given & Associates, Inc.
 735 S. Xenon Court, Suite 201
 Lakewood, CO 80228
 Ph. 303.716.1270
 Contact: Jeff Given

Electrical Engineer:
 Alber Engineering
 5173 Oak Hollow Drive
 Morrison, CO 80465
 Ph. 303.736.2739
 Contact: Jerry Alber

Interior Design:
 LBA Interiors
 5650 DTC Parkway, Suite 100
 Englewood, CO 80111
 Ph. 303.773.0436
 Contact: Mary Lou Parham

Food Service:
 United Restaurant Supply, Inc.
 725 Clark Place
 Colorado Springs, CO 80915
 Ph. 719.574.3220
 Contact: Jon Bluhm

Landscape Architect:
 Four Front Design, Inc.
 517 7th Street
 Rapid City, SD 57701
 Ph. 605.342.9470
 Contact: Eirik Heikes

GENERAL NOTES

1. ALL CEILINGS SHALL BE ACT - TYPE 1, UON.
2. CEILING HEIGHTS INDICATED ARE NOMINAL.
3. CENTER CEILING GRIDS IN ROOMS TYPICALLY AS SHOWN EXCEPT WHERE DIMENSIONS ARE PROVIDED.
4. CENTER FIXTURES AND EQUIPMENTS IN ROOMS IN CEILING TILE OR IN HALF TILES OR IN SOFFITS AS SHOWN.
5. VANITY LIGHT FIXTURES ARE TO BE CENTERED OVER THE LAVATORY SINK WHEN THE SINK IS CENTERED IN THE COUNTERTOP. OTHERWISE THE VANITY LIGHT FIXTURES ARE TO BE CENTERED OVER THE VANITY COUNTERTOP.
6. REFER TO ELECTRICAL DRAWINGS FOR LIGHT FIXTURE DESIGNATION.
7. ALL RECESSED LIGHT FIXTURES PENETRATING THE FIRE RATED CEILINGS ARE TO BE TENTED PER A0 6.2B.
8. PROVIDE ACCESS PANELS WHERE REQUIRED TO PROVIDE ACCESS TO EQUIPMENT. RE: MECH/ELEC AND SPECIFICATIONS. COORDINATE LOCATIONS W/ ARCHITECT PRIOR TO BEGINNING WORK.
9. UNLESS PREFINISHED TO MATCH ADJACENT SURFACE. PAINT MECHANICAL GRILLES, DIFFUSERS, ACCESS PANELS AND OTHER EQUIPMENT, TYP.
10. CONTRACTOR IS REQUIRED TO CONSULT WITH ARCHITECT PRIOR TO ADDING SOFFITS OR ALTERING CEILING HEIGHTS INDICATED.
11. ALL GYPSUM BOARD ADJACENT TO SHOWERS & TUBS IS TO BE MOISTURE/MOLD RESISTANT (FIREBLOCK AQUA-TOUGH INTERIOR PANELS OR APPROVED EQUAL). COORDINATE PRODUCT REQUIREMENTS WITH ASSEMBLY REQUIREMENTS AND FIRE RATINGS.

CEILING PLAN KEY NOTES:

1. REFER TO ENLARGED ULN PLANS FOR LIGHTING IN THIS AREA. RE: SHEET A-330
2. FAUX STEEL BEAM MATERIAL T.B.D. - (CAST FOAM) SPECIFICATION BY INTERIOR DESIGNER TO BE PROVIDED IN FOLLOW-UP ADDENDUM.
3. CENTER FIXTURE IN CEILING
4. REFER TO ENLARGED TOILET ROOM REFLECTED CEILING PLAN FOR DIMENSIONS THIS AREA. RE: SHEET A-330

RCP MATERIALS LEGEND

- G1 ELEV. PAINTED/TEXTURED GYPSUM BOARD.
NOTE: REFER TO GENERAL NOTE 11 FOR MOLD/MILDEW RESISTANT LOCATION SPECIFICATIONS.
- A1 ELEV. 2' - 0" x 2' - 0" ACOUSTIC CEILING TILE SYSTEM. RE: SPEC.
- A2 ELEV. 2' - 0" x 4' - 0" ACOUSTIC CEILING TILE SYSTEM. RE: SPEC.
- A3 ELEV. 2' - 0" x 4' - 0" ACOUSTIC CEILING TILE SYSTEM WITH VINYL COATED CEILING TILES. RE: SPEC.

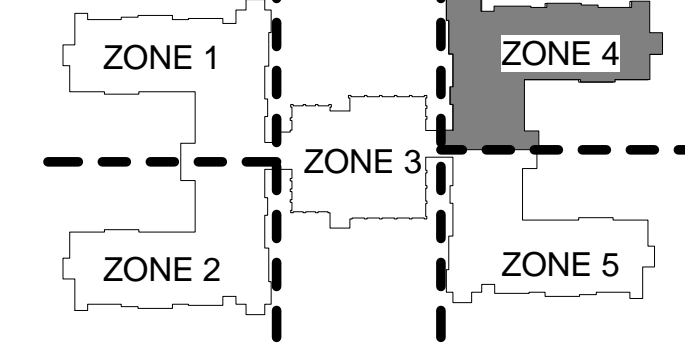
CEILING SYMBOLS LEGEND

- NOTE: ALLOWANCES LISTED ARE PRODUCT ONLY. DOES NOT INCLUDE LABOR, DELIVERY, TAX, MARK-UP, INSTALL.
- RECESSED CAN (REFER TO SPEC)
 - RECESSED WALL WASHER (REFER TO SPEC)
 - ▣ 2X2 RECESSED FLUORESCENT (REFER TO SPEC)
 - ▣ 1X4 RECESSED FLUORESCENT
 - ▣ 2X4 RECESSED FLUORESCENT
 - ▣ 1X4 SURFACE MNT'D FLUORESCENT
 - ▣ 2X4 SURFACE MNT'D FLUORESCENT
 - ⊕ MINI PENDANT (ALLOWANCE: \$400)
 - ⊕ WALL SCONCE (ALLOWANCE: \$225)
 - SURFACE MOUNTED FIXTURE (ALLOWANCE: \$300)
 - PENDANT FIXTURE (ALLOWANCE: \$550)
 - ⊕ VANITY BAR LIGHT (ALLOWANCE: \$250)
 - ⊕ TRACK LIGHTING (ALLOWANCE: \$500)
 - ⊕ UNDER COUNTER LIGHTING/LED STRIP
 - ⊕ HEAT LAMP
 - EXHAUST FAN
 - NC NURSE CALL LIGHT
 - ⊕ EXIT LIGHT
 - ▣ SUPPLY DIFFUSER OR GRILLE
 - ▣ RETURN AIR GRILLE

No.	Date	Description
1	05/17/2013	Design Development
2	10/31/2013	Construction Documents

Seal:

Key Plan:

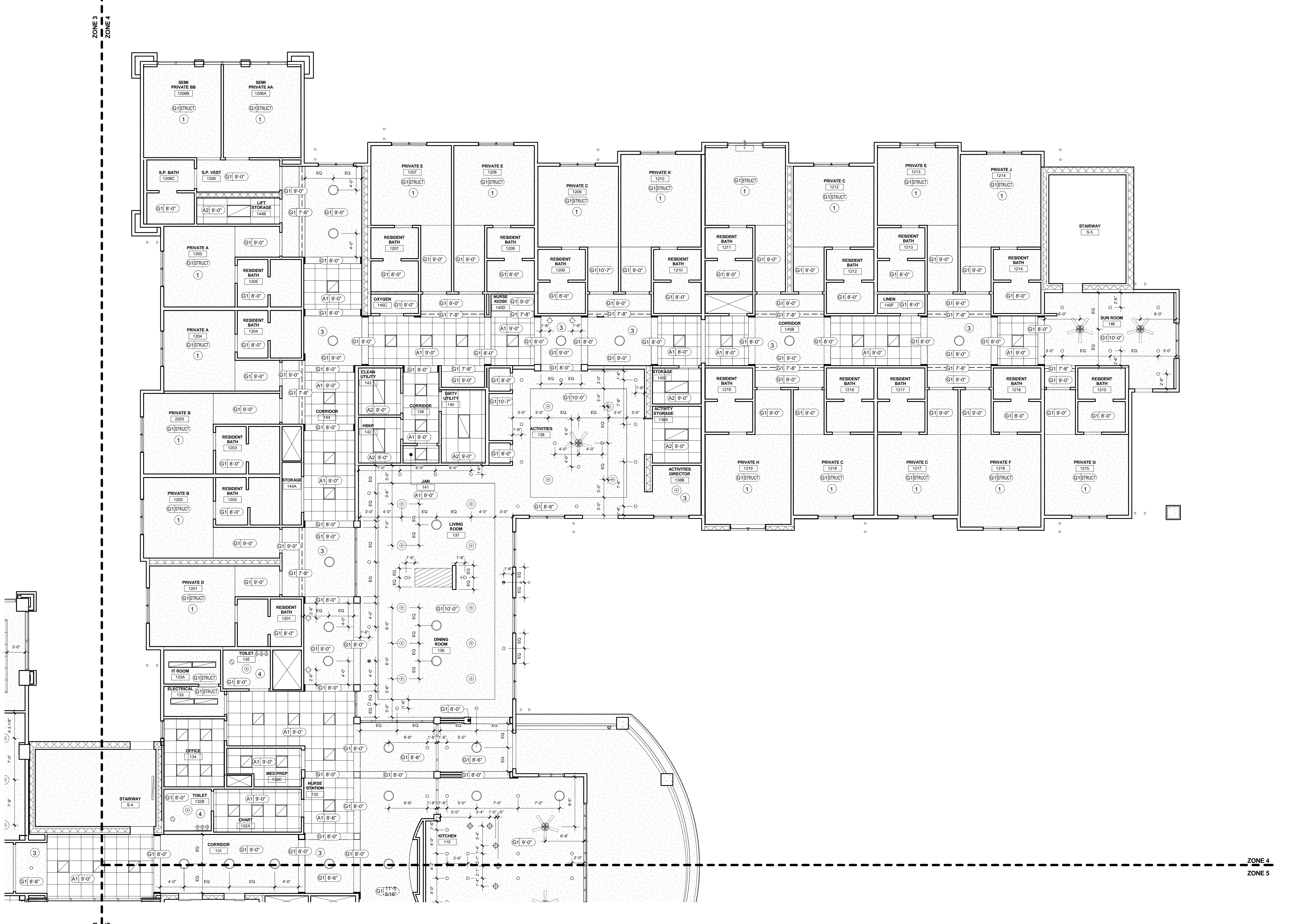


LBA Project Number: 2012.3000
 Date: October 31, 2013

FIRST FLOOR REFLECTED CLNG PLAN - ZONE 4

A-311.4

DRAWN BY: Author
 2013 Copyright ©



1 FIRST FLOOR RCP - ZONE 4
 SCALE: 1/8" = 1'-0"

