

Owner:
Campbell County Memorial Hospital
501 South Burma Ave.
Gillette, WY 82716
P.O. Box 3011
Gillette, WY 82717
Ph. 307.688.1000

Civil Engineer:
PCA Engineering, Inc.
P.O. Box 2185
4506 Wigwam Blvd.
Gillette, WY 82718
Ph. 307.687.0800
Contact: Clark Sanders

Structural Engineer:
Jirsa Hedrick & Associates
7000 E. Bellevue Ave. Suite 250
Greenwood Village, CO 80111
Ph. 303.839.1963
Contact: Steve Jirsa

Mechanical/Plumbing Engineer:
Given & Associates, Inc.
735 S. Xenon Court, Suite 201
Lakewood, CO 80228
Ph. 303.716.1270
Contact: Jeff Given

Electrical Engineer:
Alber Engineering
5173 Oak Hollow Drive
Morrison, CO 80465
Ph. 303.736.2739
Contact: Jerry Alber

Interior Design:
LBA Interiors
5650 DTC Parkway, Suite 100
Englewood, CO 80111
Ph. 303.773.0436
Contact: Mary Lou Parham

Food Service:
United Restaurant Supply, Inc.
725 Clark Place
Colorado Springs, CO 80915
Ph. 719.574.3220
Contact: Jon Bluhm

Landscape Architect:
Four Front Design, Inc.
517 7th Street
Rapid City, SD 57701
Ph. 605.342.9470
Contact: Erik Heikes

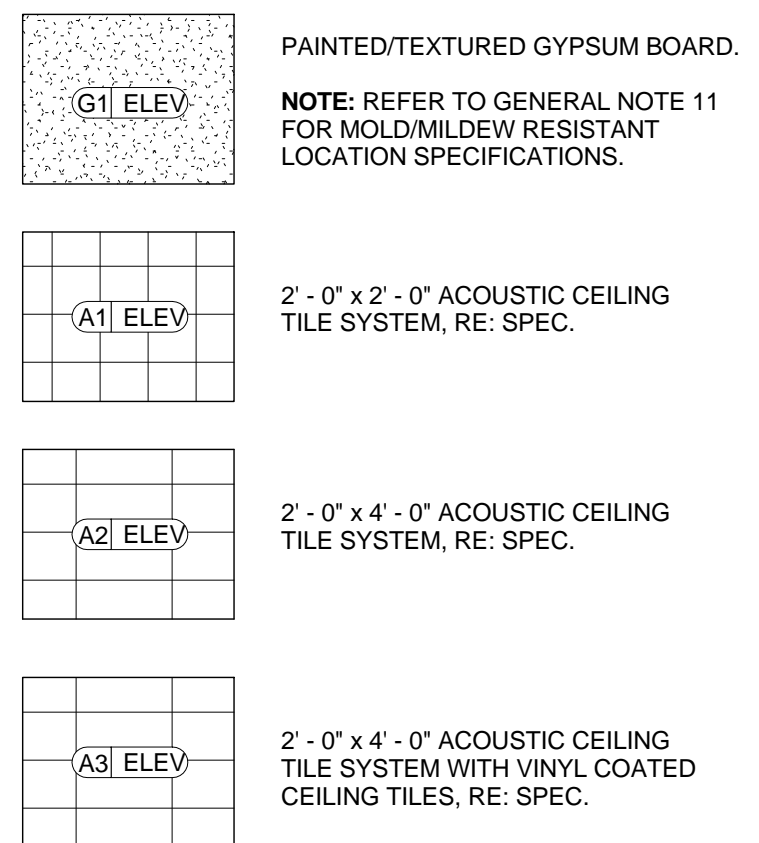
GENERAL NOTES

1. ALL CEILINGS SHALL BE ACT - TYPE 1, UON.
2. CEILING HEIGHTS INDICATED ARE NOMINAL.
3. CENTER CEILING GRIDS IN ROOMS TYPICALLY AS SHOWN EXCEPT WHERE DIMENSIONS ARE PROVIDED.
4. CENTER FIXTURES AND EQUIPMENTS IN ROOMS IN CEILING TILE OR IN HALF TILES OR IN SOFFITS AS SHOWN.
5. VANITY LIGHT FIXTURES ARE TO BE CENTERED OVER THE LAVATORY SINK WHEN THE SINK IS CENTERED IN THE COUNTERTOP, OTHERWISE THE VANITY LIGHT FIXTURES ARE TO BE CENTERED OVER THE VANITY COUNTERTOP.
6. REFER TO ELECTRICAL DRAWINGS FOR LIGHT FIXTURE DESIGNATION.
7. ALL RECESSED LIGHT FIXTURES PENETRATING THE FIRE RATED CEILING ARE TO BE TENTED PER A0 6.28.
8. PROVIDE ACCESS PANELS WHERE REQUIRED TO PROVIDE ACCESS TO EQUIPMENT. RE: MECH/ELEC AND SPECIFICATIONS. COORDINATE LOCATIONS W/ ARCHITECT PRIOR TO BEGINNING WORK.
9. UNLESS PREFINISHED TO MATCH ADJACENT SURFACE. PAINT MECHANICAL GRILLES, DIFFUSERS, ACCESS PANELS AND OTHER EQUIPMENT, TYP.
10. CONTRACTOR IS REQUIRED TO CONSULT WITH ARCHITECT PRIOR TO ADDING SOFFITS OR ALTERING CEILING HEIGHTS INDICATED.
11. ALL GYPSUM BOARD ADJACENT TO SHOWERS & TUBS IS TO BE MOISTURE/MOLD RESISTANT (FIREBLOCK AQUA-TOUGH INTERIOR PANELS OR APPROVED EQUAL). COORDINATE PRODUCT REQUIREMENTS WITH ASSEMBLY REQUIREMENTS AND FIRE RATING.

CEILING PLAN KEY NOTES:

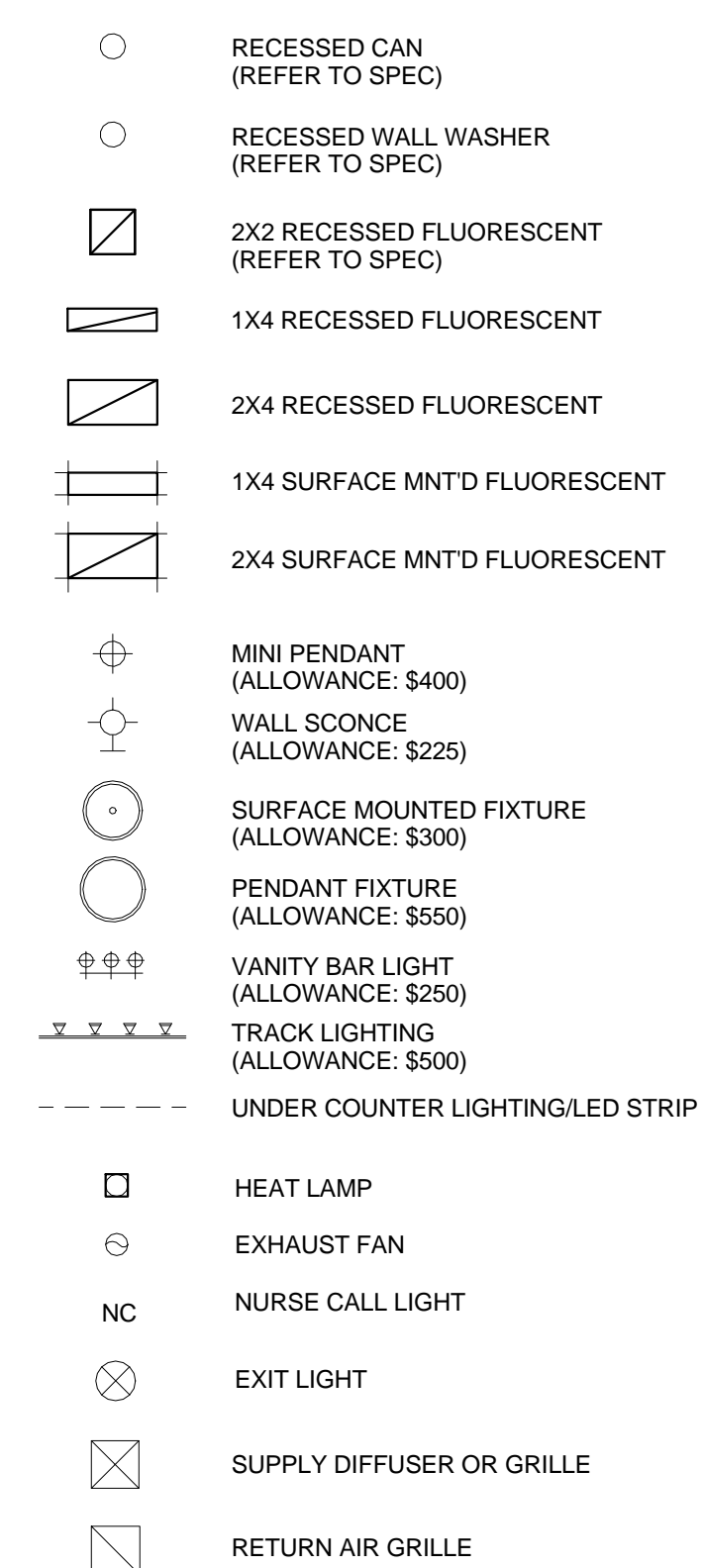
- 1 REFER TO ENLARGED UNIT PLANS FOR LIGHTING IN THIS AREA. RE: SHEET A-330
- 2 FAUX STEEL BEAM MATERIAL T.B.D. (CAST FOAM) SPECIFICATION BY INTERIOR DESIGNER TO BE PROVIDED IN FOLLOW-UP ADDENDUM.
- 3 CENTER FIXTURE IN CEILING
- 4 REFER TO ENLARGED TOILET ROOM REFLECTED CEILING PLAN FOR DIMENSIONS THIS AREA. RE: SHEET A-330

RCP MATERIALS LEGEND



CEILING SYMBOLS LEGEND

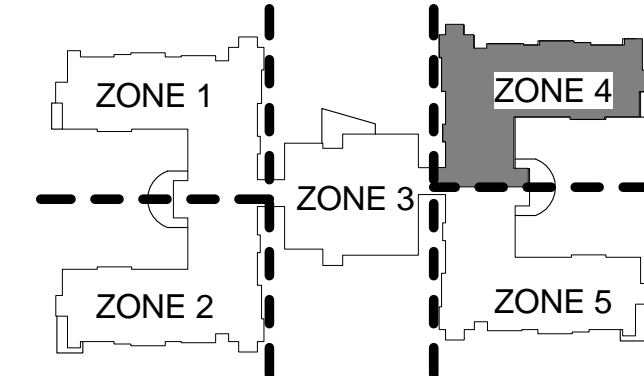
NOTE: ALLOWANCES LISTED ARE PRODUCT ONLY. DOES NOT INCLUDE: LABOR, DELIVERY, TAX, MARK-UP, INSTALL.



No.	Date	Description
1	05/17/2013	Design Development
2	10/31/2013	Construction Documents

Seat:

Key Plan:

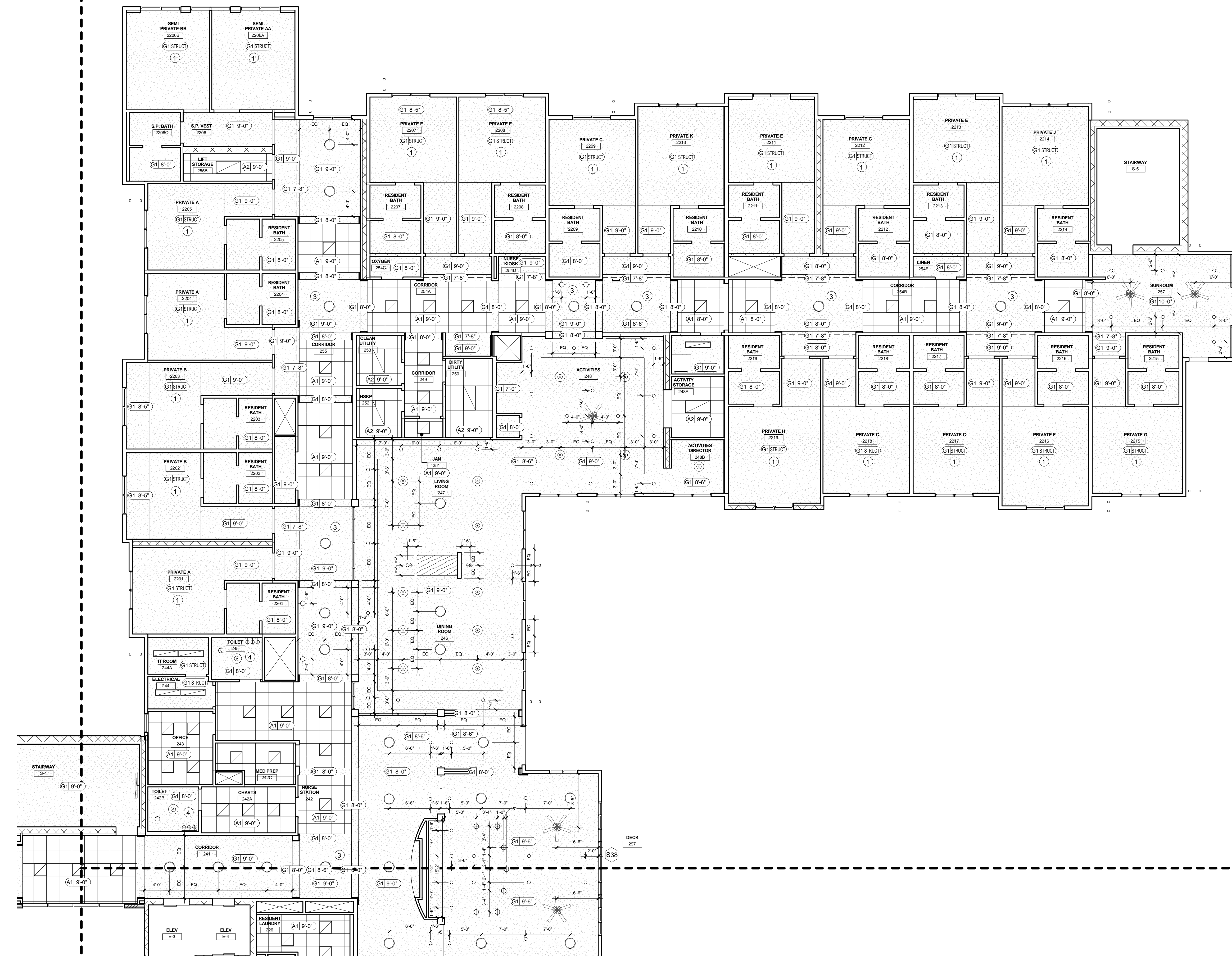


LBA Project Number: 2012.3000
Date: October 31, 2013

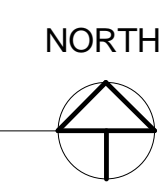
SECOND FLOOR REFLECTED CLNG PLAN - ZONE 4

A-321.4

DRAWN BY: Author



1 SECOND FLOOR RCP - ZONE 4
SCALE: 1/8" = 1'-0"



NOTICE: These documents are instruments of professional service and information contained herein is incomplete unless used in conjunction with Lantz-Boggio's interpretations, decisions, observations and administrative use. Use or reproduction of these documents in whole or part without Lantz-Boggio's consent is in violation of common law, copyrights, statutory and other reserved rights. Refer to Act 17 U.S.C. par. 511 (1991), which preempts state and local public records act. Refer to Act 17 U.S.C. par. 301 (1991).