

Owner:
 Campbell County Memorial Hospital
 501 South Burma Ave.
 Gillette, WY 82716
 P.O. Box 3011
 Gillette, WY 82717
 Ph. 307.688.1000

Civil Engineer:
 PCA Engineering, Inc.
 P.O. Box 2185
 4506 Wigwam Blvd.
 Gillette, WY 82718
 Ph. 307.687.0600
 Contact: Clark Sanders

Structural Engineer:
 Jirsa Hedrick & Associates
 7000 E. Bellevue Ave, Suite 250
 Greenwood Village, CO 80111
 Ph. 303.839.1963
 Contact: Steve Jirsa

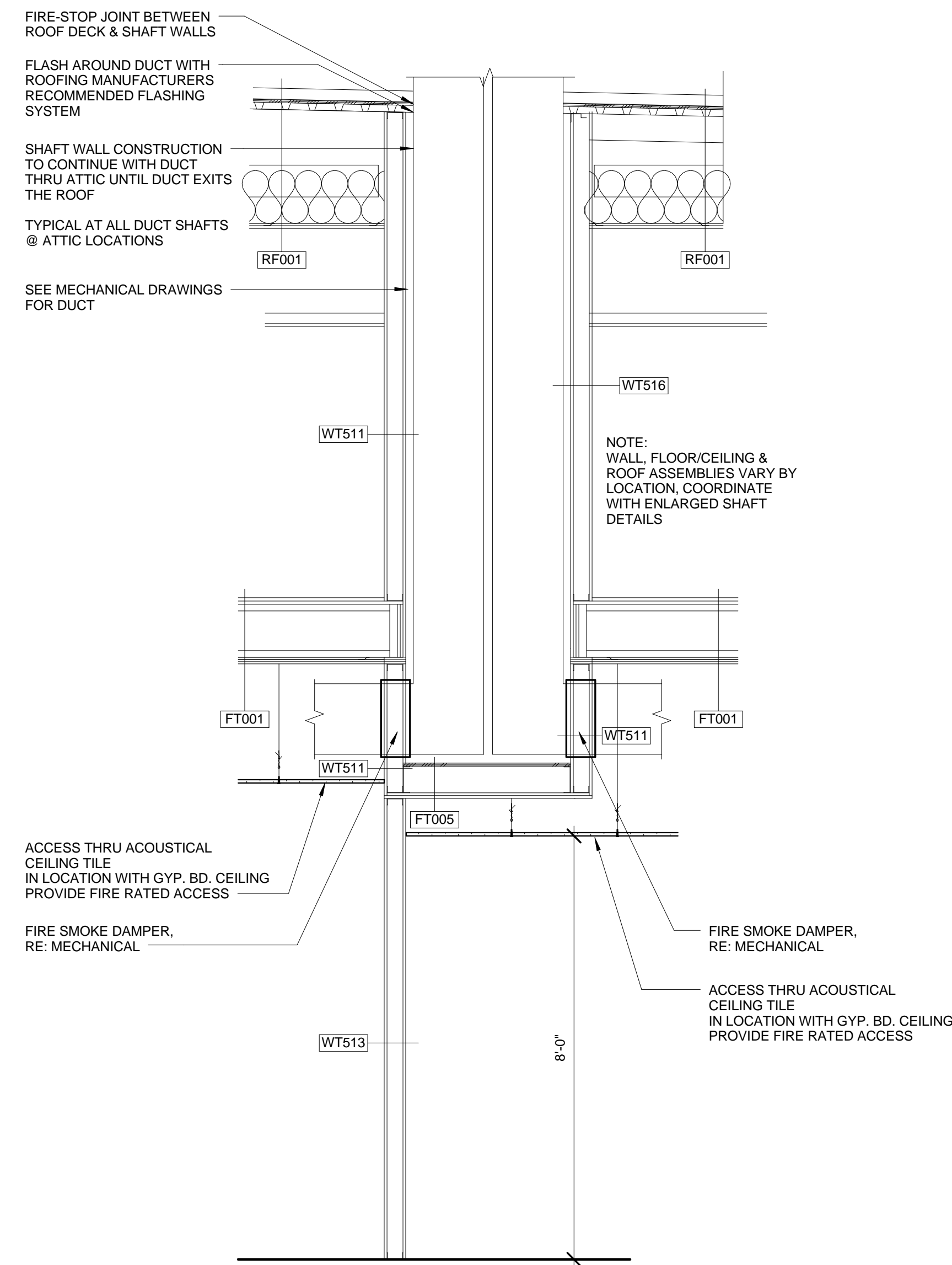
Mechanical/Plumbing Engineer:
 Given & Associates, Inc.
 735 S. Xenon Court, Suite 201
 Lakewood, CO 80228
 Ph. 303.716.1270
 Contact: Jeff Given

Electrical Engineer:
 Alber Engineering
 5173 Oak Hollow Drive
 Morrison, CO 80465
 Ph. 303.736.2739
 Contact: Jerry Alber

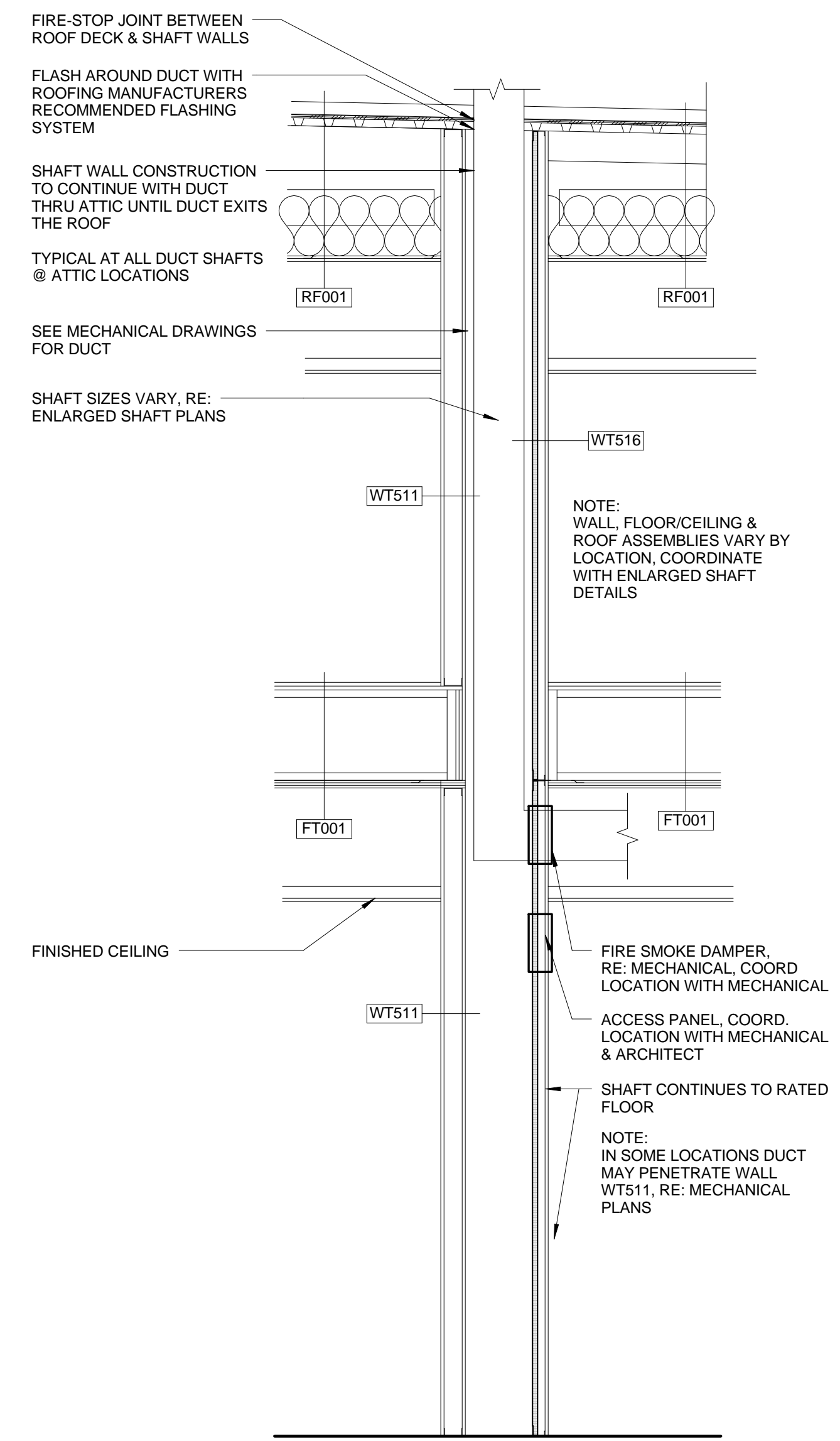
Interior Design:
 LBA Interiors
 5650 DTC Parkway, Suite 100
 Englewood, CO 80111
 Ph. 303.773.0436
 Contact: Mary Lou Parham

Food Service:
 United Restaurant Supply, Inc.
 725 Clark Place
 Colorado Springs, CO 80915
 Ph. 719.574.3220
 Contact: Jon Bluhm

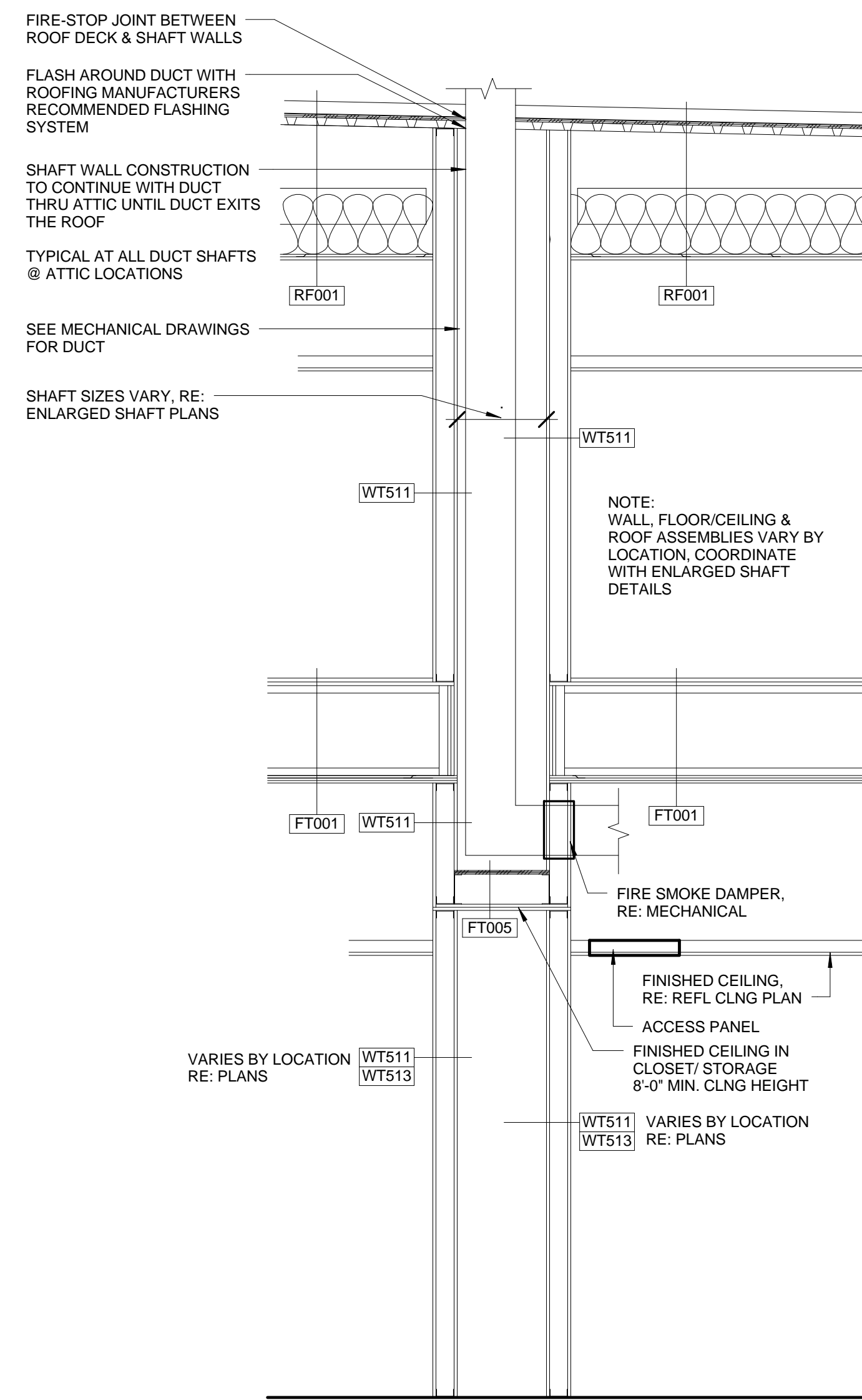
Landscape Architect:
 Four Front Design, Inc.
 517 7th Street
 Rapid City, SD 57701
 Ph. 605.342.9470
 Contact: Eirik Heikes



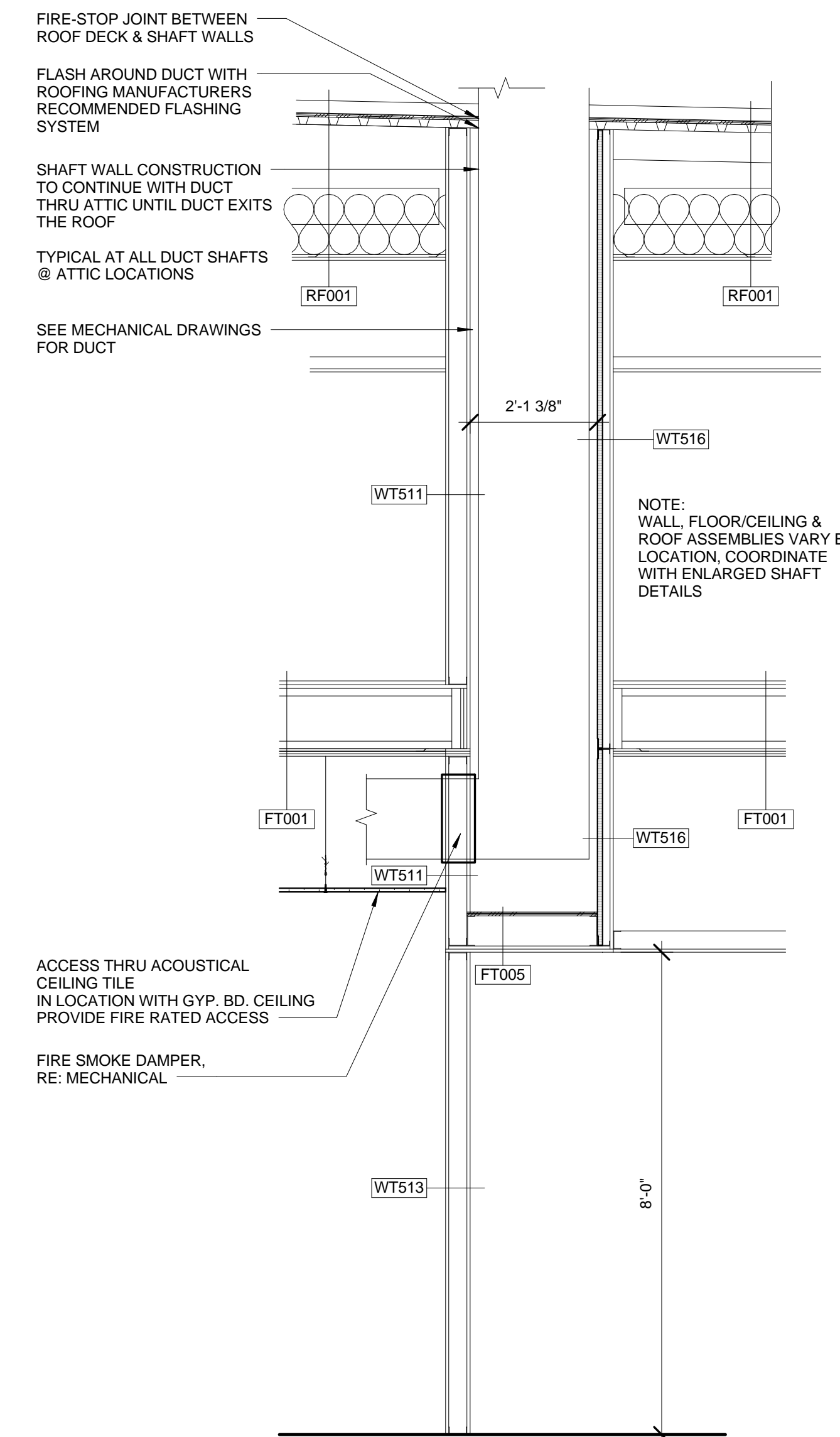
4 VERTICAL SHAFT 4
 SCALE: 1/2" = 1'-0"



2 VERTICAL SHAFT 2
 SCALE: 1/2" = 1'-0"



3 VERTICAL SHAFT 3
 SCALE: 1/2" = 1'-0"



1 VERTICAL SHAFT
 SCALE: 1/2" = 1'-0"

No.	Date	Description
1	05/17/2013	Design Development
2	10/31/2013	Construction Documents

Seal:

Key Plan:

LBA Project Number: 2012.3000
 Date: October 31, 2013

SHAFT DETAILS

A-561

DRAWN BY: Author