

**Owner:**  
 Campbell County Memorial Hospital  
 501 South Burns Ave.  
 Gillette, WY 82716  
 P.O. Box 3011  
 Gillette, WY 82717  
 Ph. 307.688.1000

**Civil Engineer:**  
 PCA Engineering, Inc.  
 P.O. Box 2185  
 4506 Wigwam Blvd.  
 Gillette, WY 82718  
 Ph. 307.687.0600

**Contract:** Clark Sanders

**Structural Engineer:**  
 Jirsa Hedrick & Associates  
 7000 E. Bellevue Ave. Suite 250  
 Greenwood Village, CO 80111  
 Ph. 303.839.1963  
 Contact: Steve Jirsa

**Mechanical/Plumbing Engineer:**  
 Given & Associates, Inc.  
 735 S. Xenon Court, Suite 201  
 Lakewood, CO 80228  
 Ph. 303.716.1270  
 Contact: Jeff Given

**Electrical Engineer:**  
 Alber Engineering  
 5173 Oak Hollow Drive  
 Morrison, CO 80465  
 Ph. 303.736.2739  
 Contact: Jerry Alber

**Interior Design:**  
 LBA Interiors  
 5650 DTC Parkway, Suite 100  
 Englewood, CO 80111  
 Ph. 303.773.0436  
 Contact: Mary Lou Parham

**Food Service:**  
 United Restaurant Supply, Inc.  
 725 Clark Place  
 Colorado Springs, CO 80915  
 Ph. 719.574.3220  
 Contact: Jon Bluhm

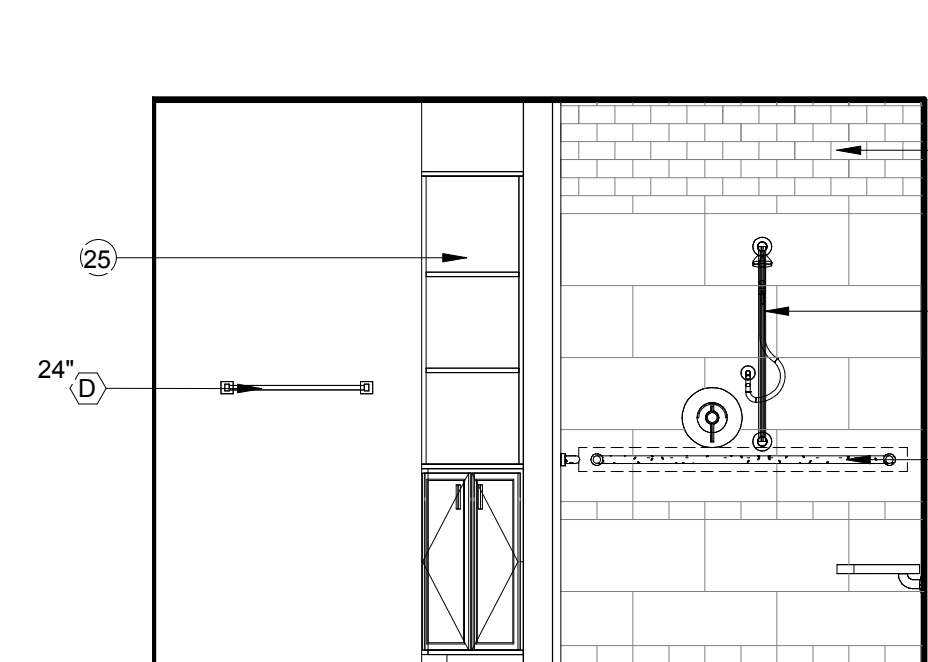
**Landscape Architect:**  
 Four Front Design, Inc.  
 517 7th Street  
 Rapid City, SD 57701  
 Contact: Eirik Heikes

**GENERAL NOTES:**

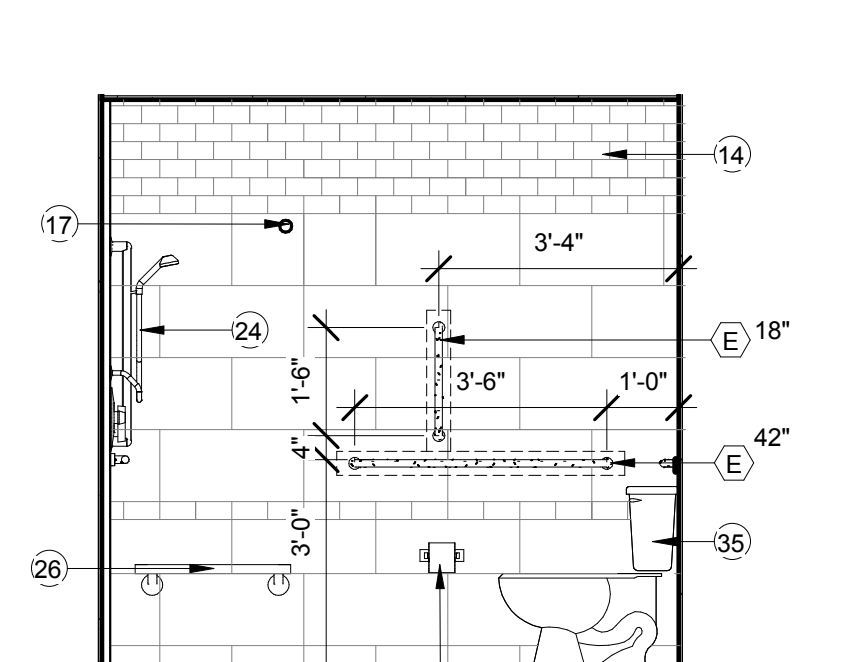
- ALL DIMENSIONS INDICATED ARE MEASURED FROM FACE OF FINISH UNLESS OTHERWISE NOTED.
- TOLERANCES FOR BUILT-IN ITEMS, INCLUDING CASEWORK, MILLWORK, APPLIANCES, ETC. MUST BE FIELD COORDINATED TO ENSURE ADEQUATE FIT AND PROPER CLEARANCES.
- FLOOR FINISH, WALL FINISH AND WALL BASE ARE TO BE INSTALLED BENEATH AND BEHIND ALL BASE CABINETS INDICATED TO BE REMOVABLE.
- PROVIDE FINISHED END PANELS MATCHING THE CABINET FACE AT ALL EXPOSED CABINET SIDES.
- ALL EXPOSED EDGES AT COUNTER TOPS ARE TO BE POST FORMED AT UNLESS NOTED OTHERWISE.
- PROVIDE WOOD BLOCKING OR METAL STRAP WITHIN THE WALL CAVITY, AS REQUIRED FOR THE INSTALLATION OF TOILET ACCESSORIES, GRAB BARS, HANDRAILS, LEAN RAILS, CABINETS, WINDOW TREATMENTS, DOOR FRAMES, ETC...
- REFER TO THE TYPICAL MOUNTING HEIGHTS DIAGRAM ON SHEET A-807 FOR MOUNTING HEIGHTS OF ACCESSORIES AND DEVICES.
- REFER TO THE ROOM FINISH SCHEDULE AND INTERIOR DESIGN DRAWING FOR ALL FINISHES THROUGHOUT THE BUILDING.
- REFER TO SHEET A-850 FOR MOLDING PROFILES.
- REFER TO THE ELECTRICAL DRAWINGS FOR LIGHT FIXTURE TYPES AND MOUNTING REQUIREMENTS.
- COUNTERTOPS THAT ARE INDICATED TO BE AT 34" MEASURED FROM THE FINISHED FLOOR TO THE TOP OF THE SINK RIM OR LESS THAN 34" TO THE TOP OF THE COUNTERTOP MAY REQUIRE CUSTOM CABINETRY TO COMPLY WITH ACCESSIBILITY GUIDELINES, UNLESS CONTRACTOR CAN DEMONSTRATE AND ALTERNATE METHOD OF COMPLIANCE.
- VALVES, DISCONNECTS, SWITCHES, DRAINS, ETC. REQUIRED AS PART OF THE HOT FOOD WELL INSTALLATION ARE TO BE LOCATED NEAR THE FROM OF THE INTERIOR OF THE CABINET TO ALLOW EASY ACCESS.
- ALL OPERABLE CABINET DOORS AND DRAWERS (WHETHER SHOWN OR NOT) ARE TO RECEIVE A PULL PER SPECIFICATIONS.
- PROVIDE (2) 2" CROMMET FOR EACH KNEE SPACE AT DESK COUNTERTOPS, LOCATION TO BE DETERMINED.

**INTERIOR ELEVATION KEY NOTES:**

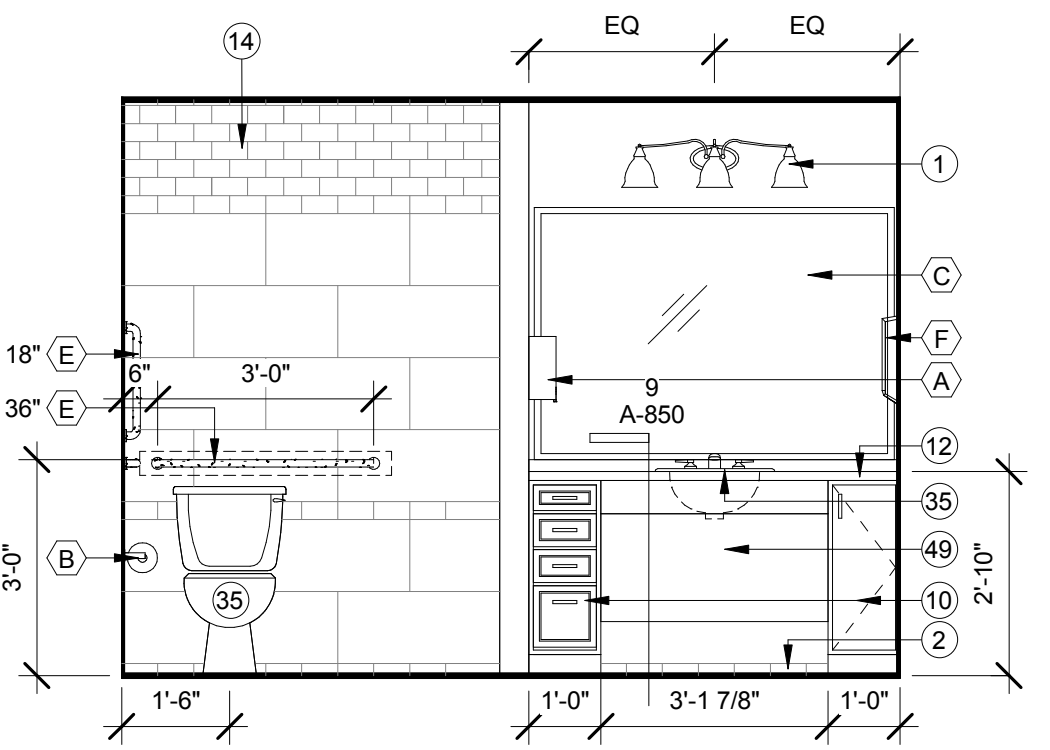
- LIGHT FIXTURE, RE: ELECTRICAL
- WALL BASE, RE: INT. FINISH PLANS
- REFRIGERATOR, RE: SPECIFICATIONS
- WASHER, RE: SPECIFICATIONS
- DRYER, RE: SPECIFICATIONS
- WALL OVEN, RE: SPECIFICATIONS
- DISHWASHER, RE: SPECIFICATIONS
- WALL MICROWAVE, RE: SPECIFICATIONS
- DOOR, RE: DOOR SCHEDULE
- PRE-MANUFACTURED CABINETRY, RE: SPECIFICATIONS FOR DOOR STYLE, FINISH, ETC.
- PLASTIC LAMINATE COUNTER TOP, RE: INT. FINISH SPECIFICATIONS
- GRANITE/QUARTZ COUNTER TOP, RE: INT. FINISH SPECIFICATIONS
- SHOWER, RE: SPECIFICATIONS
- INTERIOR WALL TILE, RE: INT. FINISH SPECIFICATIONS
- CEILING, RE: REFLECTED CEILING PLANS
- WOOD BLOCKING OR METAL STRAP AT CONTRACTORS OPTION FOR FUTURE BAR INSTALLATION
- SHOWER CURTAIN ROD
- FINISHED END PANEL TO MATCH CASEWORK, TYP.
- GLASS PANELS
- CLOSET ROD & SHELF
- FIREPLACE, RE: SPECIFICATIONS
- CHAIRRAIL, RE: 171A-850 FOR MOLDING PROFILES
- HANDRAIL, RE: 17A-850 FOR MOLDING PROFILES
- HAND HELD SHOWER HEAD AND SHOWER CONTROL
- TALL CABINET
- FOLD UP SHOWER SEAT
- BATHTUB, RE: SPECIFICATIONS
- GYP. BD. LIGHT COVE
- HOOD, RE: SPECIFICATIONS
- GLASS FRONT CABINETS
- HARDWOOD VENEER FINISHED BACK PANEL TO MATCH CASEWORK, TYP.
- LOCKERS, RE: SPECIFICATIONS
- TV BY OWNER
- STONE SLAB SURROUND, RE: INT. SPECIFICATIONS
- PLUMBING FIXTURE, RE: SPECIFICATIONS
- WOOD VENEER
- PTD. GYP. BD.
- GLASS PANEL W/WOOD TRIM, RE: INT. WINDOW ELEVATIONS
- PLASTIC LAMINATE, RE: INT. FINISH SPECIFICATIONS
- QUARTZ VENEER
- LOCK AT CABINETS/DRAWERS, ALL LOCKS TO BE KEYPED ALIKE
- COMMERCIAL KITCHEN EQUIP., RE: FOOD SERVICE DWGS
- CROWN MOLDING
- FILLER AS NECESSARY
- SOFFIT @ CABINETS TO FOLLOW LINE OF CROWN @ WALL CABINETS
- 2" DEEP CABINET OVER WALL OVEN/MICROWAVE APPLIANCE COMBO. CABINET TO HAVE FINISHED SIDE & FRONT PANELS & TRIM AS NEC. BY CABINET MANUFACTURER



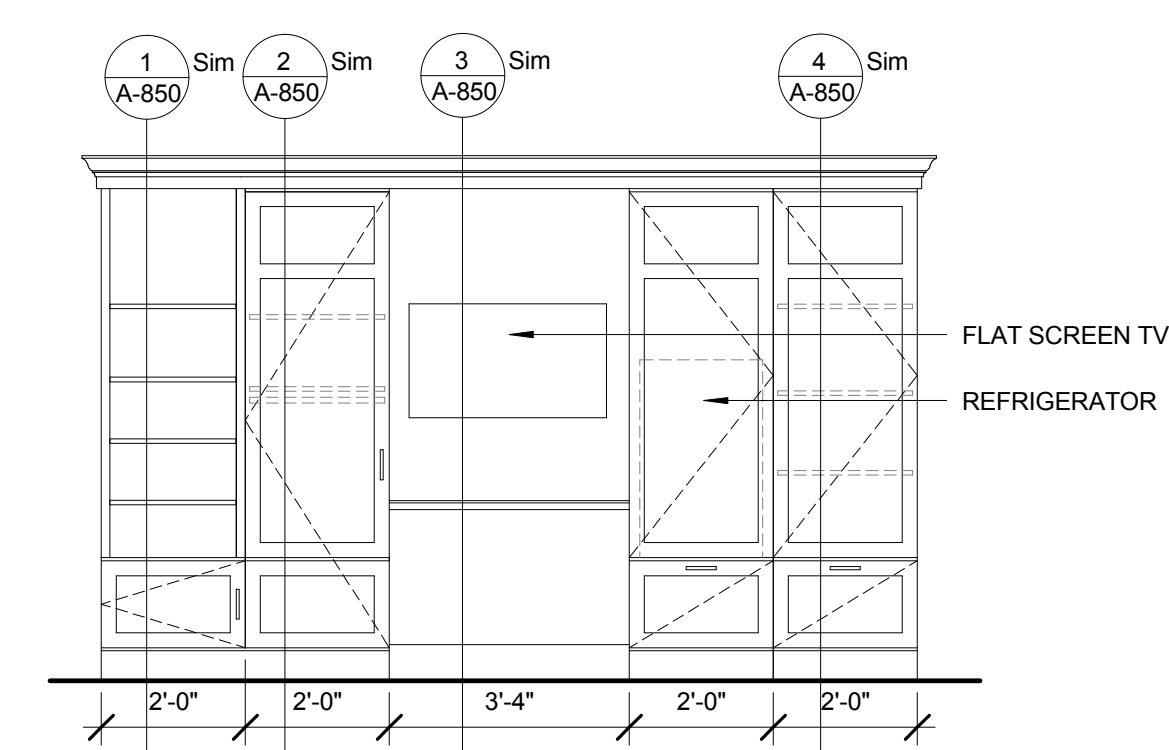
**4 RESIDENT BATH SHOWER ELEV. TYPICAL**  
 SCALE: 3/8" = 1'-0"



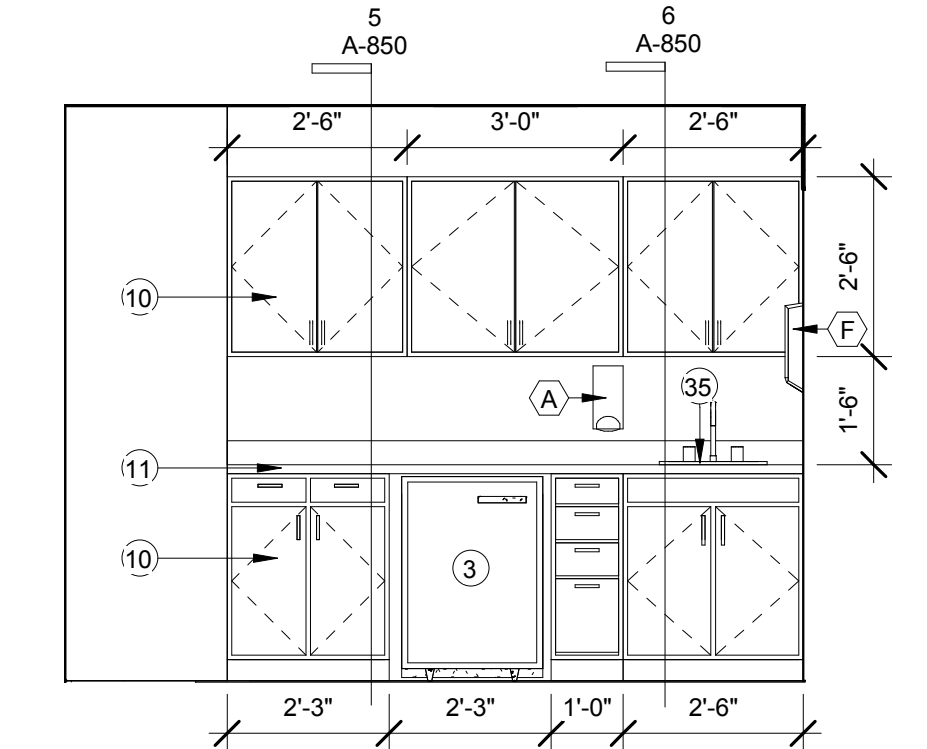
**3 RESIDENT BATH TOILET SIDE ELEV. TYPICAL**  
 SCALE: 3/8" = 1'-0"



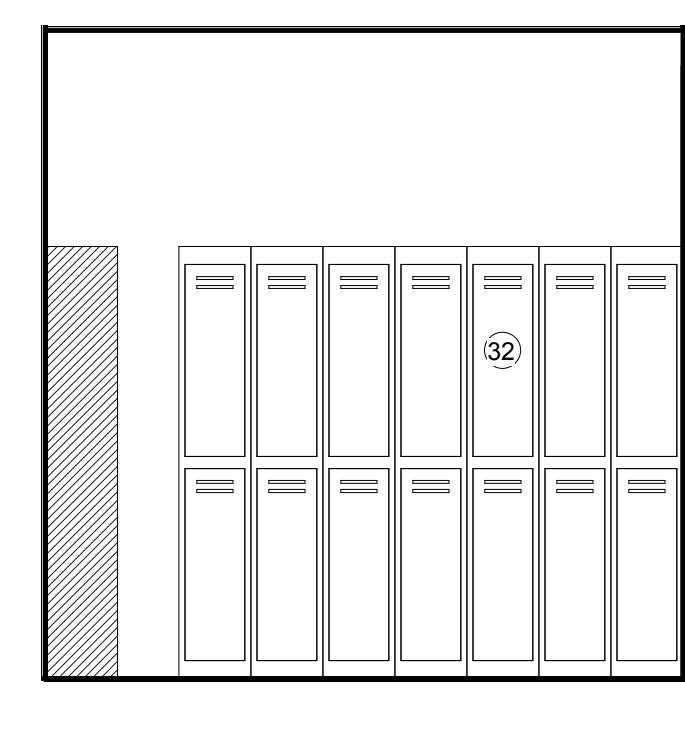
**2 RESIDENT BATH TOILET/ SINK ELEV. TYPICAL**  
 SCALE: 3/8" = 1'-0"



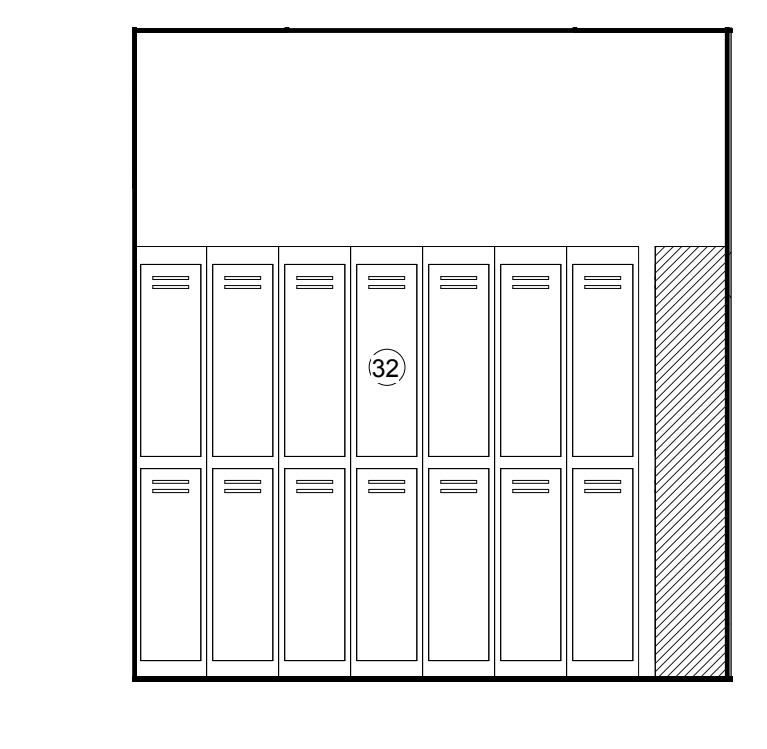
**1 RESIDENT CABINETRY**  
 SCALE: 3/8" = 1'-0"



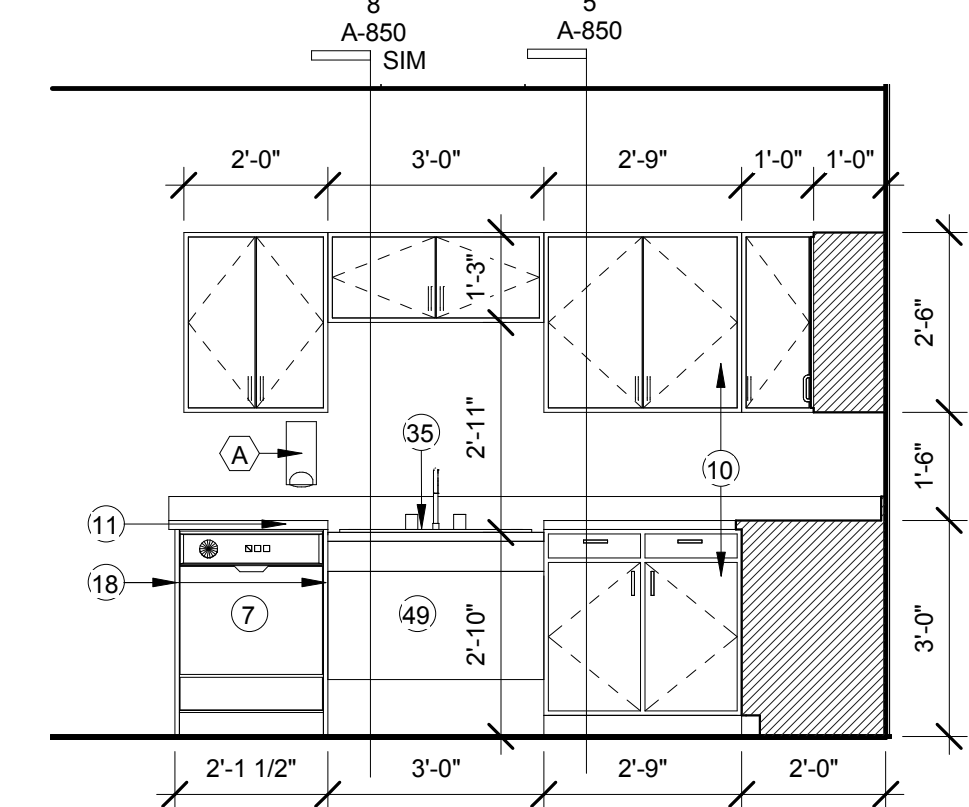
**10 MED PREP 149 EAST**  
 SCALE: 3/8" = 1'-0"



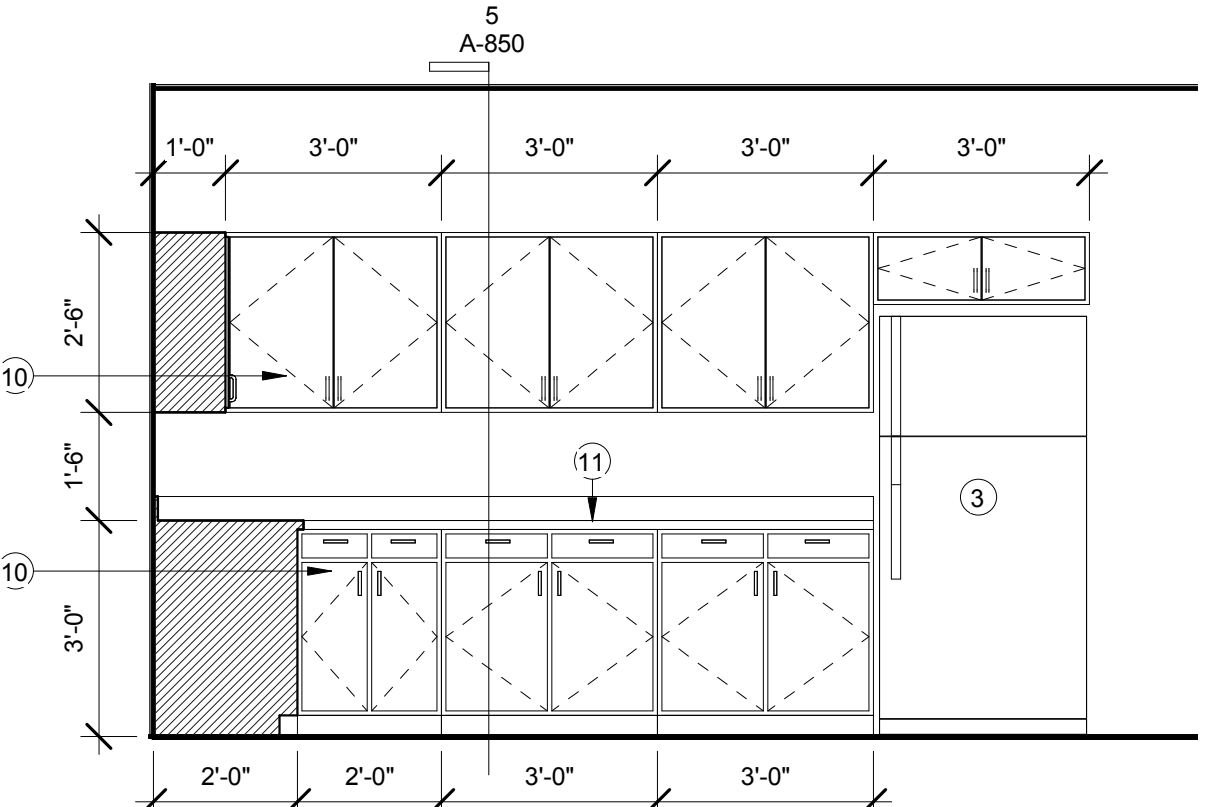
**9 LOCKER ROOM WEST**  
 SCALE: 3/8" = 1'-0"



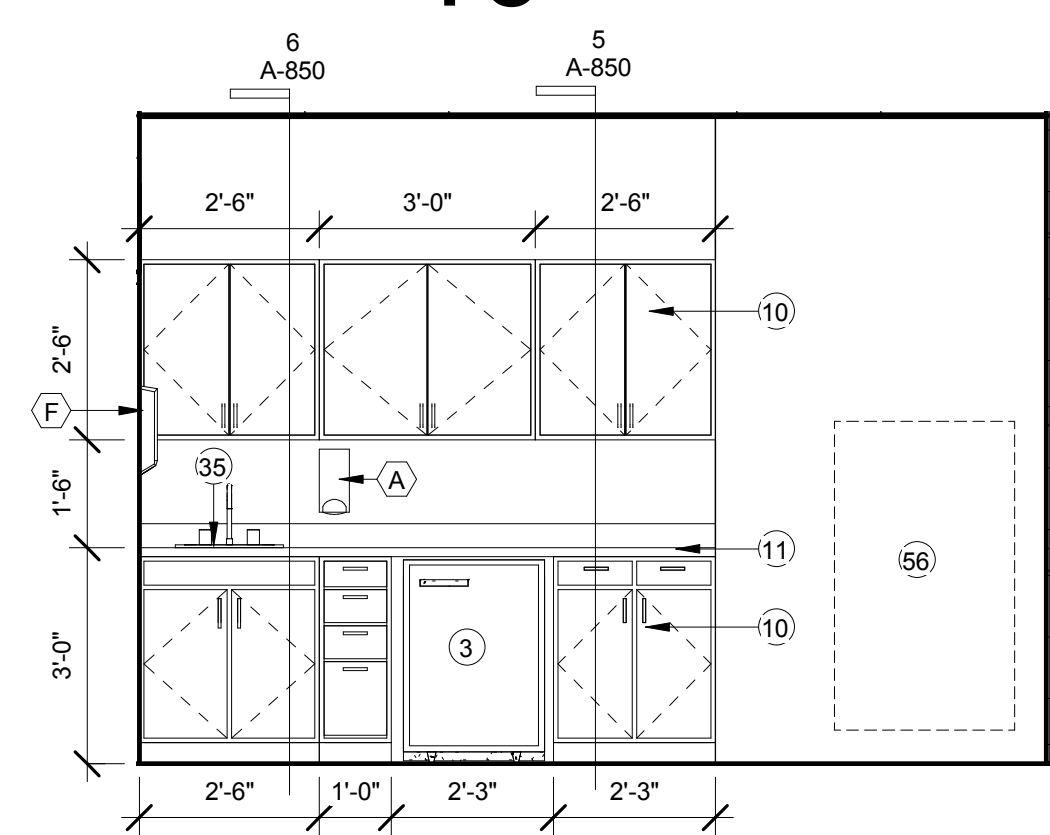
**8 LOCKER ROOM SOUTH**  
 SCALE: 3/8" = 1'-0"



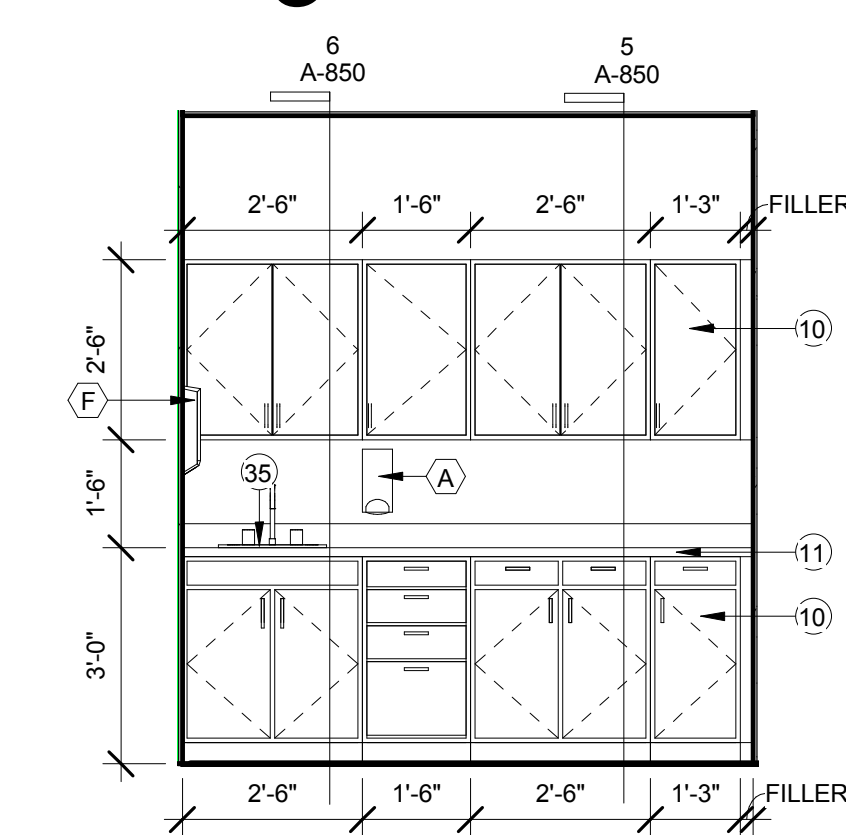
**7 STAFF LOUNGE 029 NORTH**  
 SCALE: 3/8" = 1'-0"



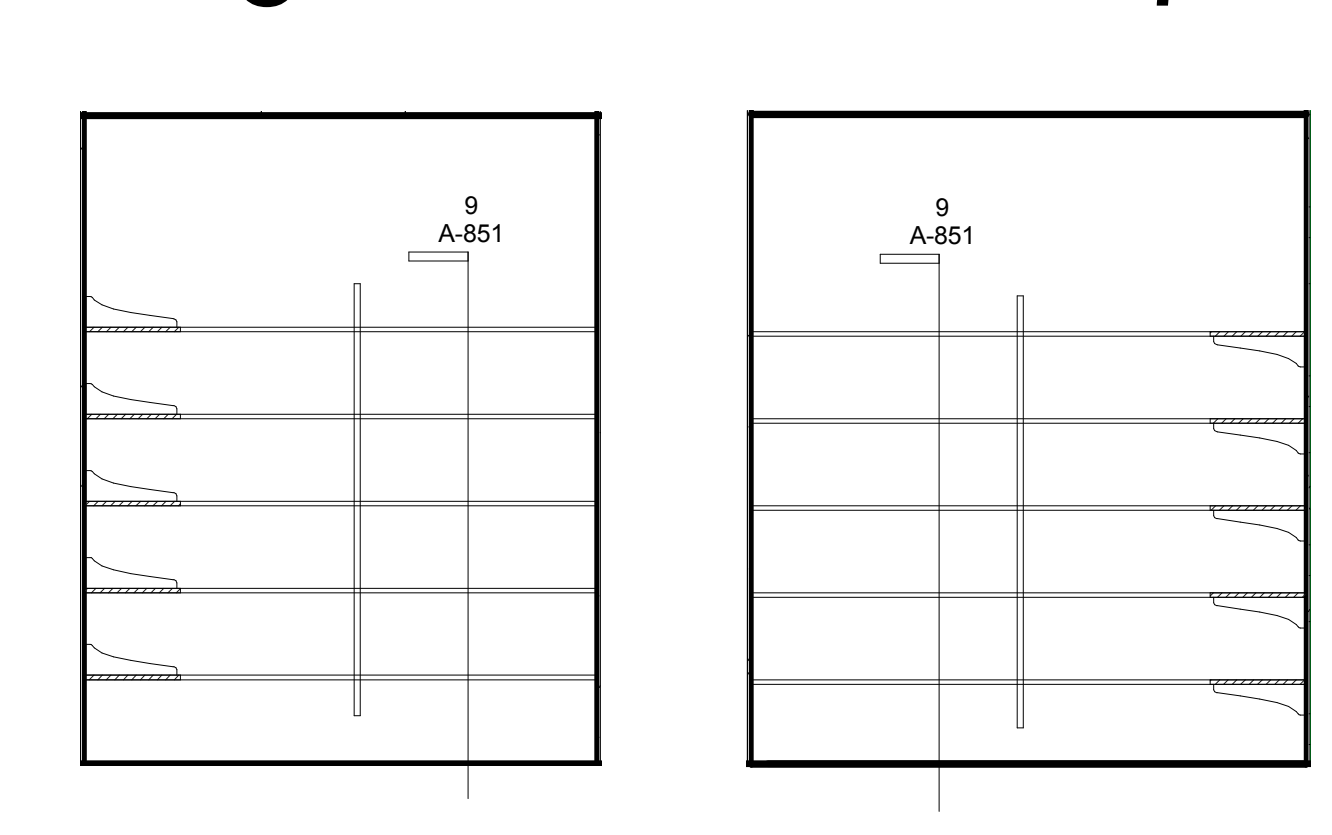
**6 STAFF LOUNGE 029 EAST**  
 SCALE: 3/8" = 1'-0"



**16 MED PREP 132C & 242C SOUTH**  
 SCALE: 3/8" = 1'-0"

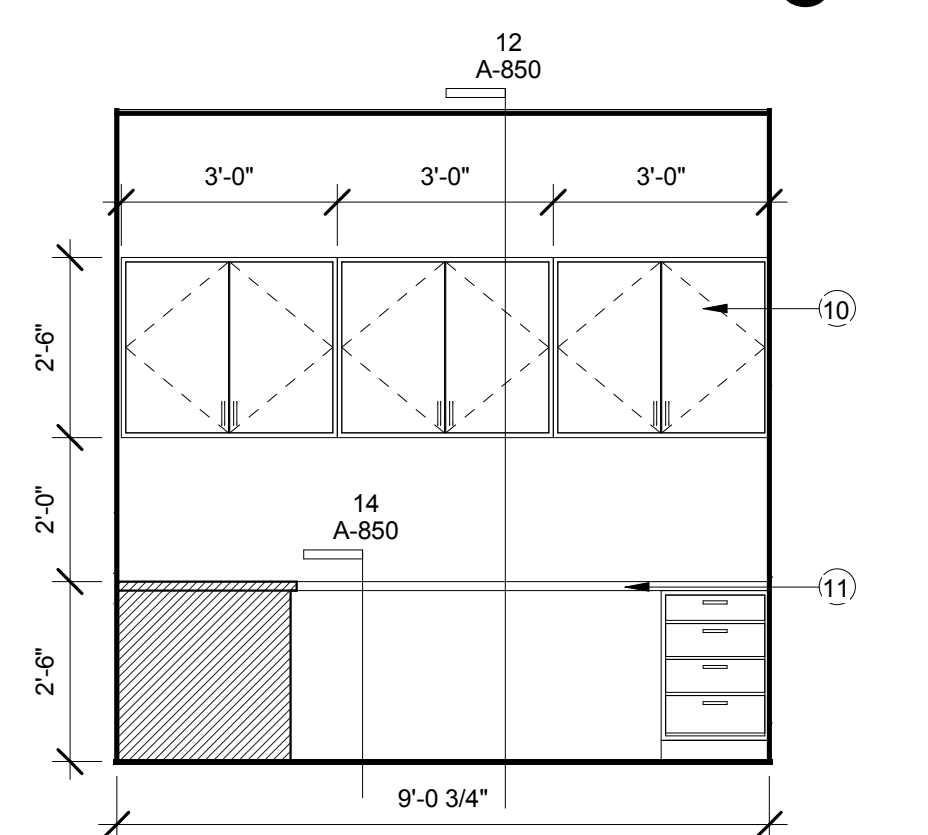


**15 CLEAN UTILITY TYP**  
 SCALE: 3/8" = 1'-0"

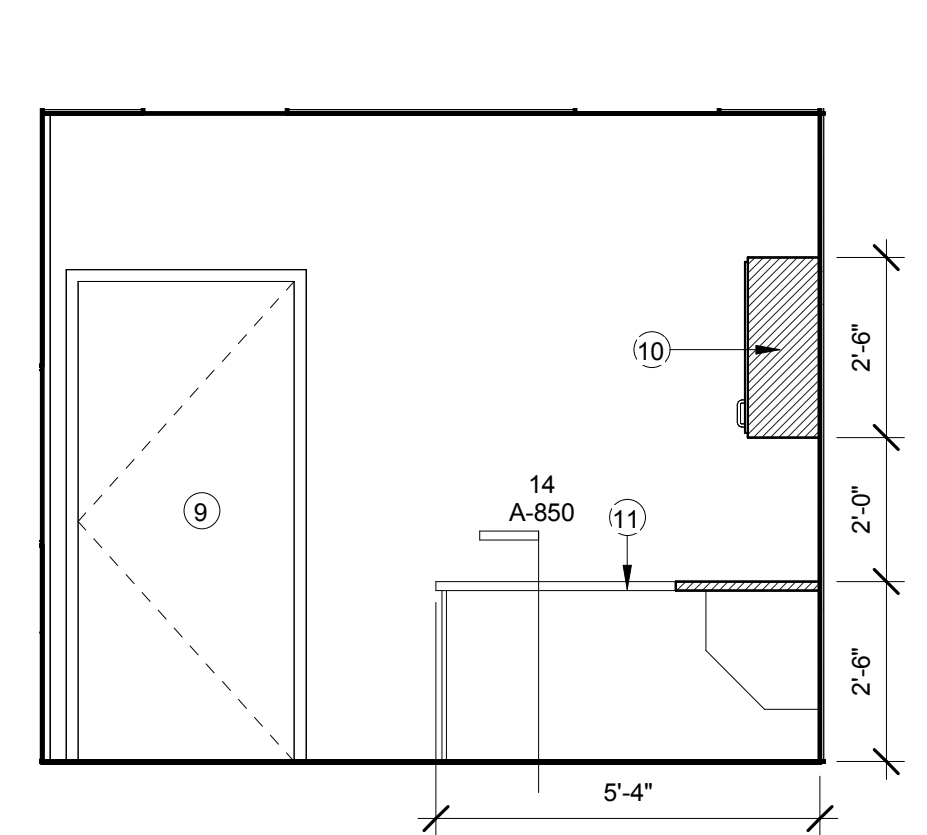


**14 HSKP SOUTH TYP**  
 SCALE: 3/8" = 1'-0"

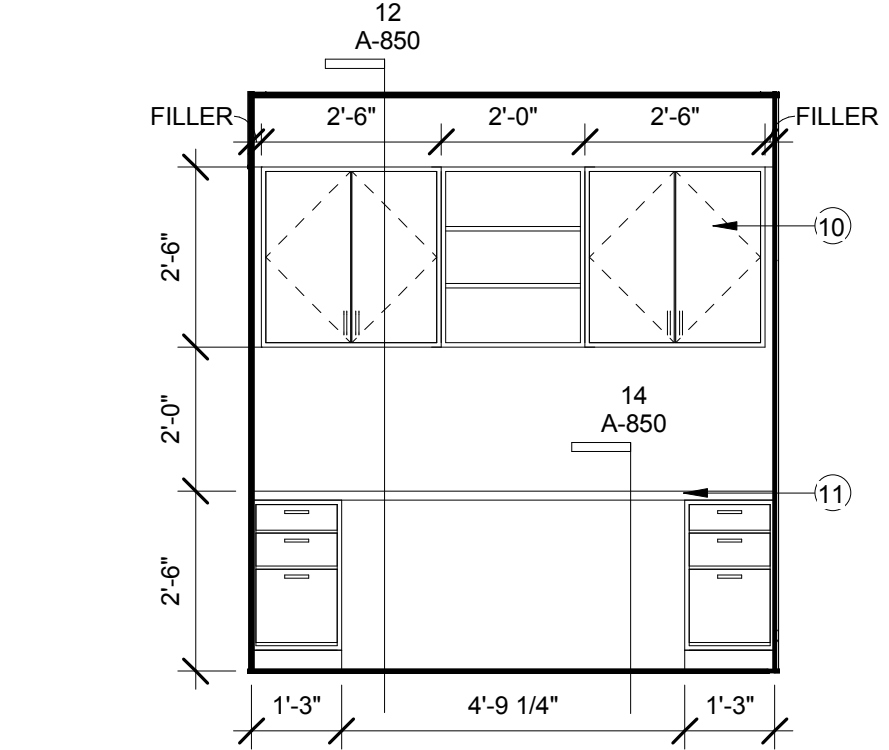
**13 HSKP WEST TYP**  
 SCALE: 3/8" = 1'-0"



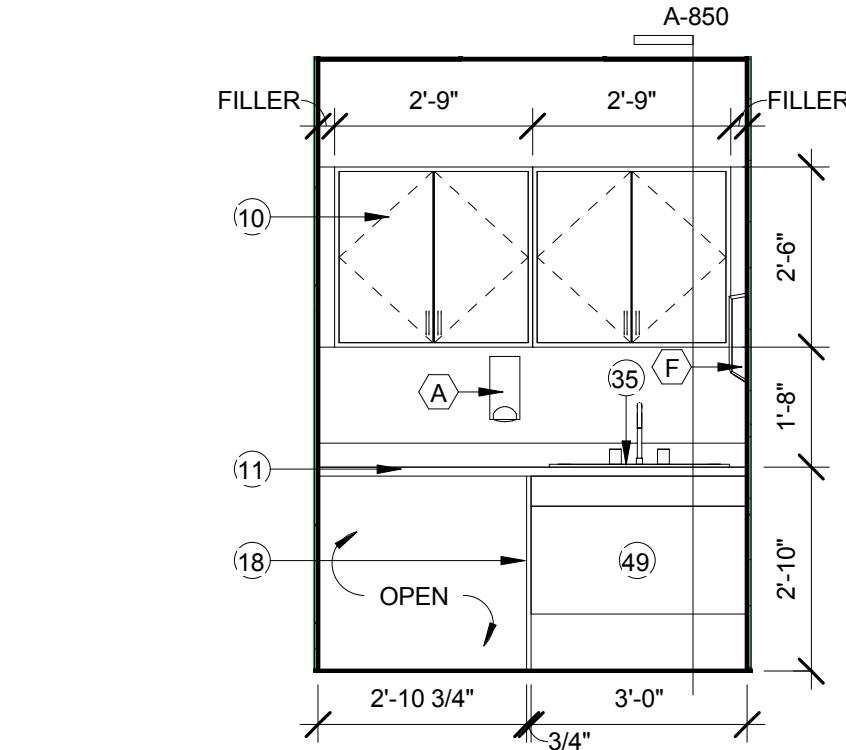
**12 DIETARY OFFICE 024 SOUTH**  
 SCALE: 3/8" = 1'-0"



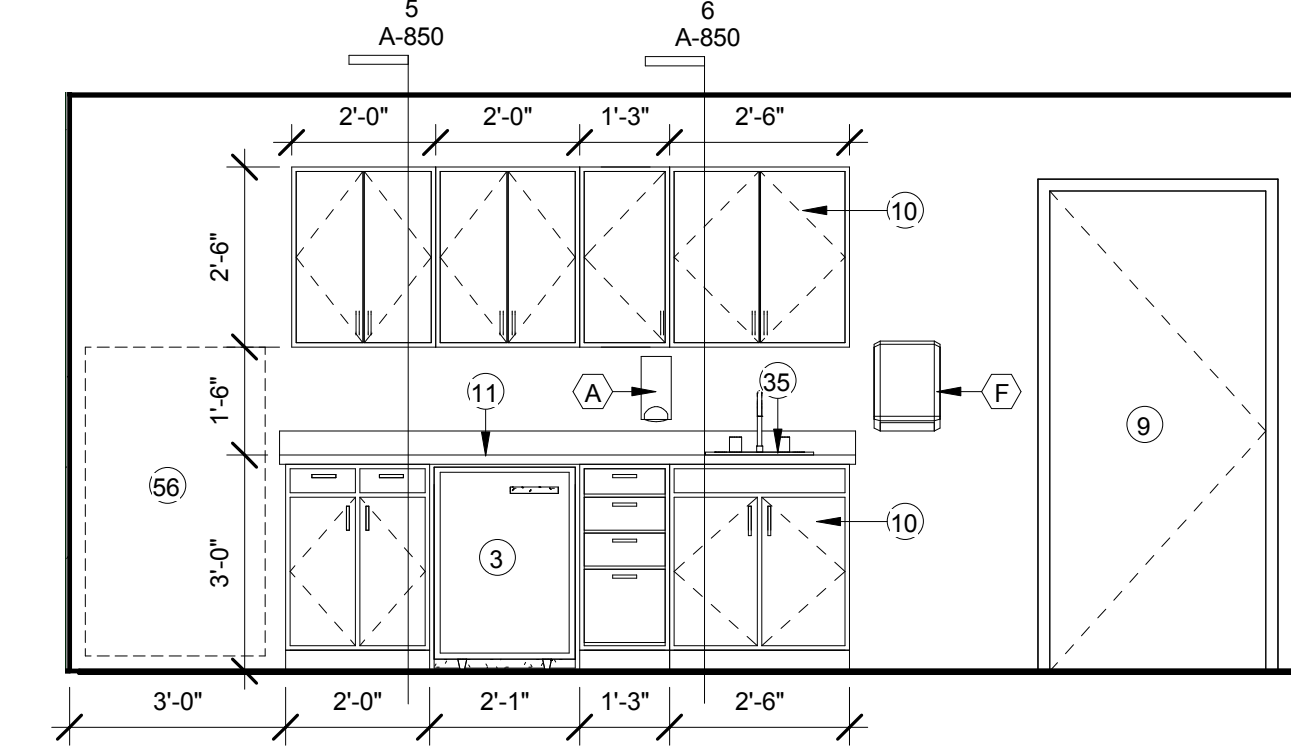
**11 DIETARY OFFICE 024 EAST**  
 SCALE: 3/8" = 1'-0"



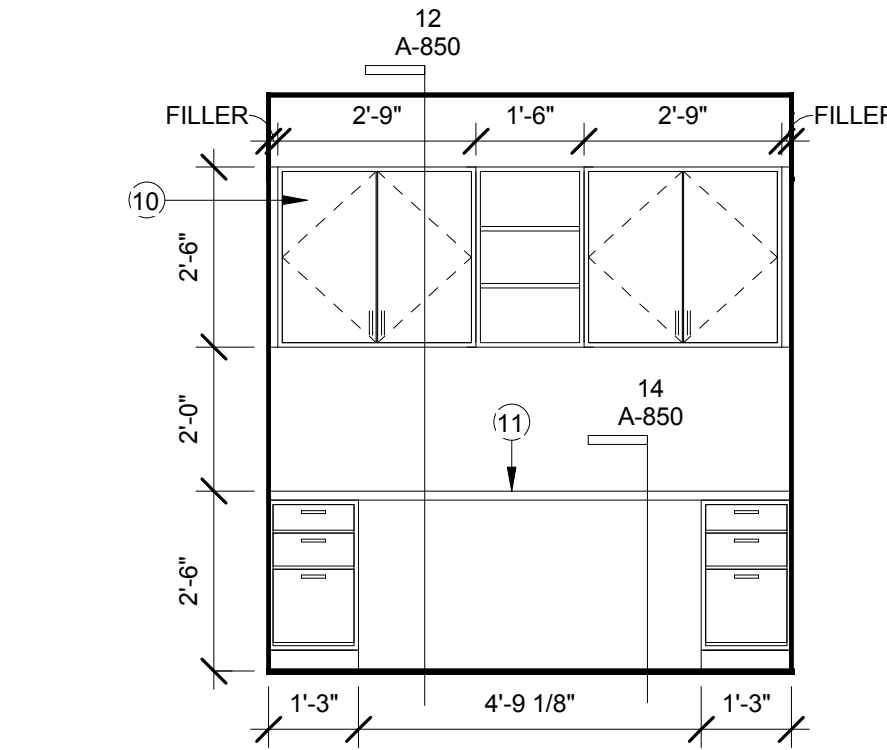
**21 CHART 148A WEST**  
 SCALE: 3/8" = 1'-0"



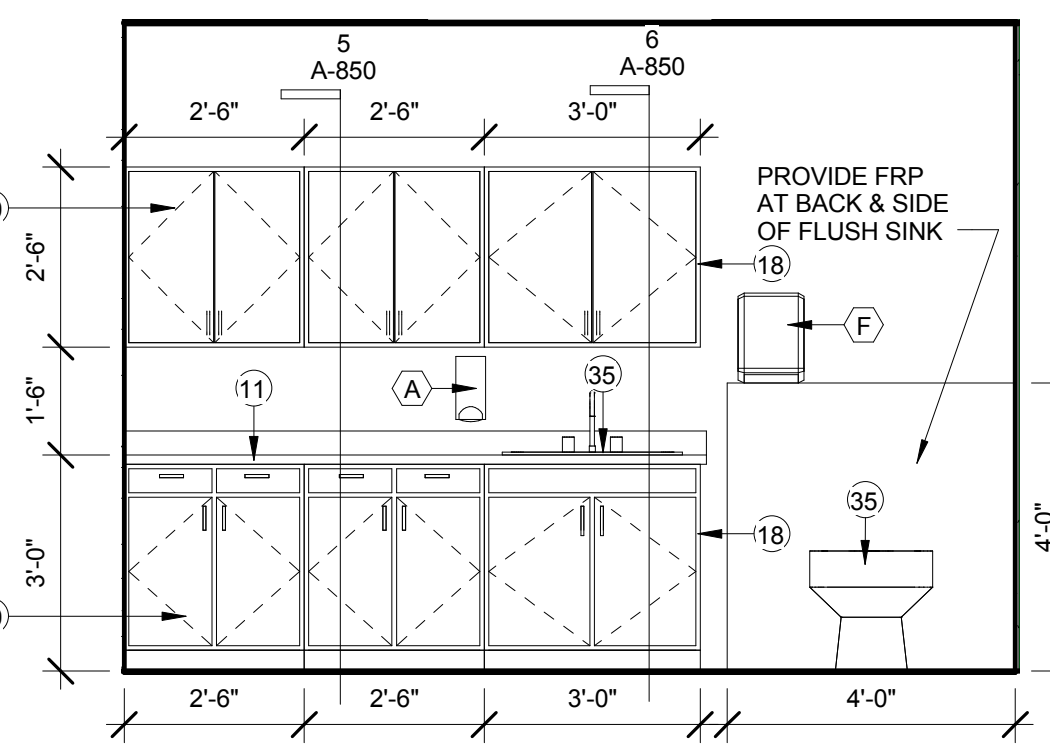
**20 RESIDENT LAUNDRY 116 WEST**  
 SCALE: 3/8" = 1'-0"



**19 MED PREP 163A WEST**  
 SCALE: 3/8" = 1'-0"



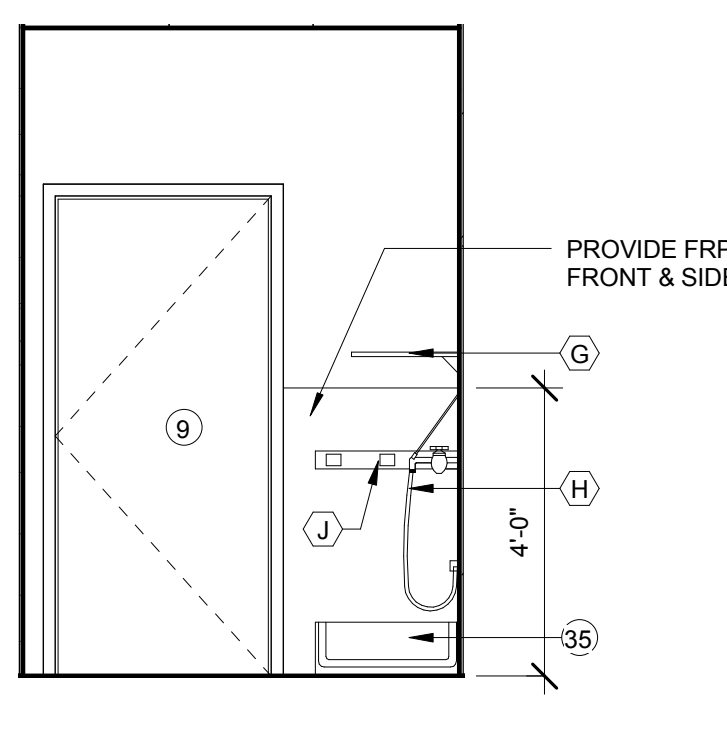
**18 CHART 163 SOUTH**  
 SCALE: 3/8" = 1'-0"



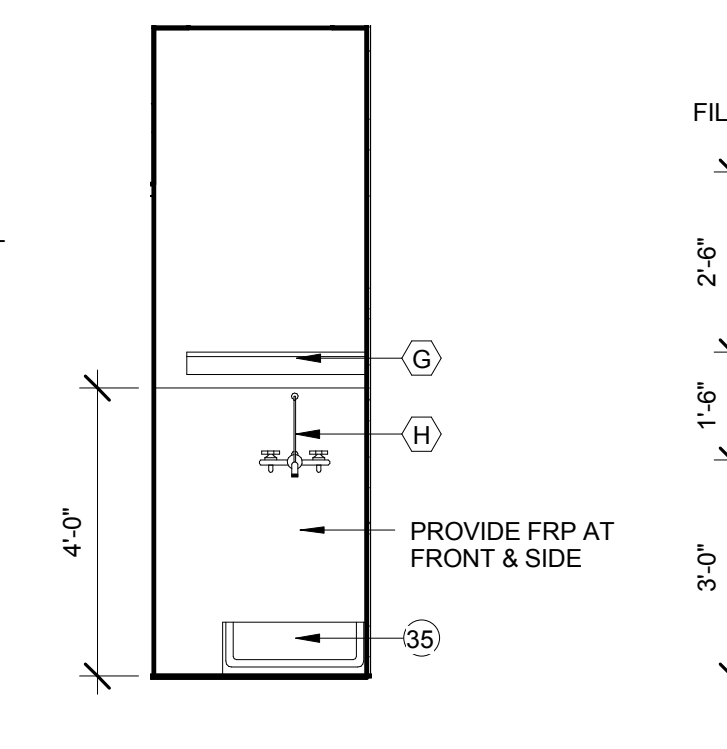
**17 DIRTY UTILITY TYPICAL**  
 SCALE: 3/8" = 1'-0"

**TOILET ACCESSORIES:**

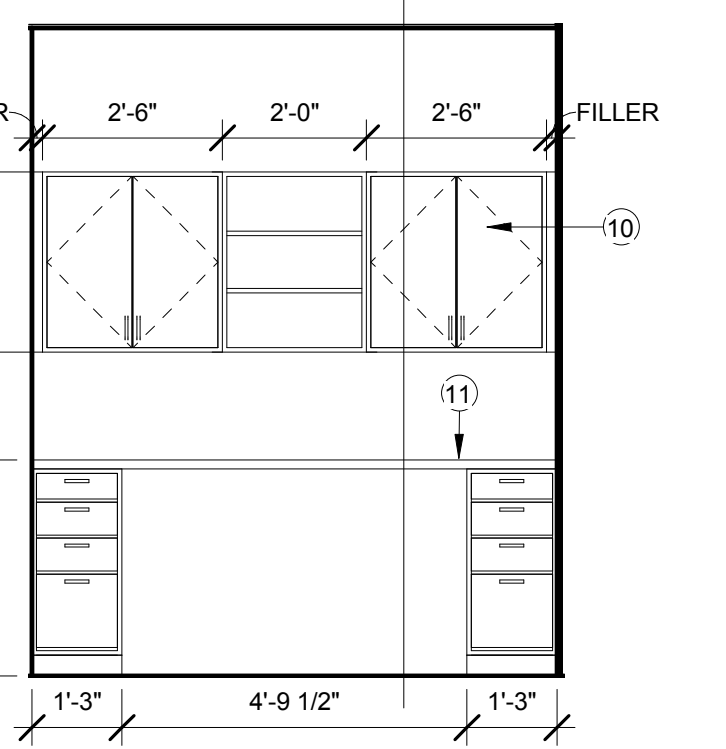
- SEE SPECIFICATION SECTION FOR ADDITIONAL INFORMATION.  
 SEE TYPICAL MOUNTING HEIGHTS DETAILS FOR INSTALLATION HEIGHTS.
- (A) SOAP DISPENSER
  - (B) TOILET TISSUE HOLDER (SINGLE)
  - (C) MIRROR, VERIFY SIZE & STYLE W/ INTERIOR ELEVATIONS (SEE SECTION 08800-GLAZING)
  - (D) TOWEL BAR, CONTRACTOR TO PROVIDE ADEQUATE BLOCKING AS REQUIRED.
  - (E) GRAB BAR, SIZE AS INDICATED ON INTERIOR ELEVATIONS, PLASTIC REINFORCED W/ STAINLESS STEEL INSERTS AND CONCEALED FASTENERS. COLOR, WHITE. CONTRACTOR TO PROVIDE ADEQUATE BLOCKING AS REQUIRED.
  - (F) PAPER TOWEL DISPENSER
  - (G) UTILITY SHELF
  - (H) HOSE AND HOSE HOLDER
  - (J) MOP HOLDER 24"



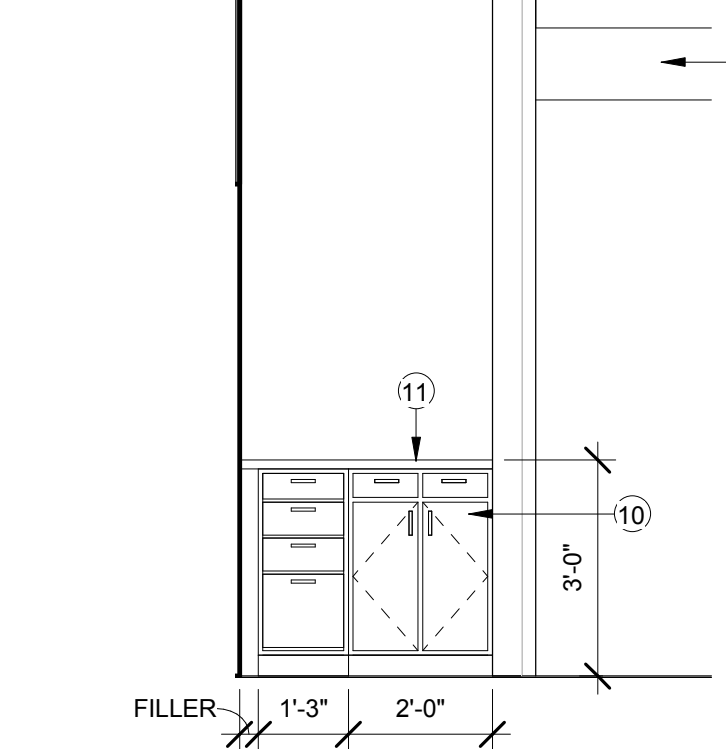
**26 MOP SINK SIDE ELEV. TYPICAL**  
 SCALE: 3/8" = 1'-0"



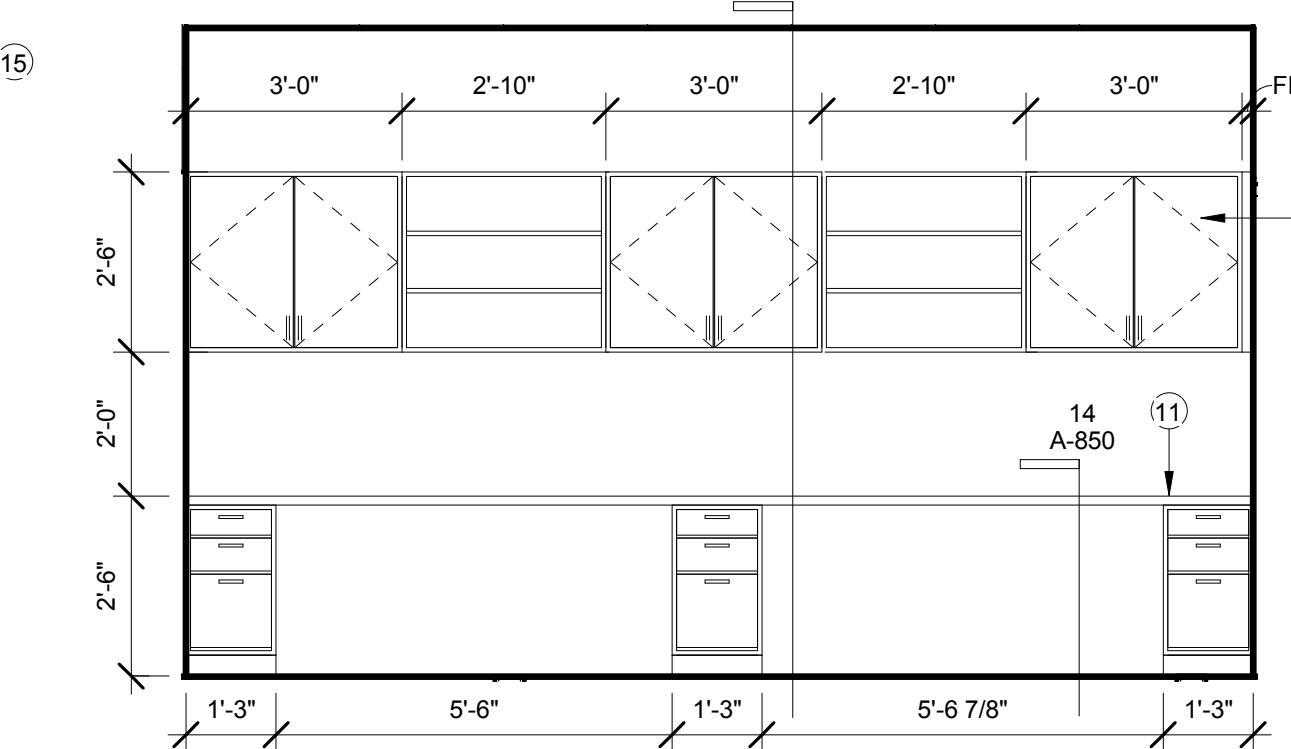
**25 MOP SINK FRONT ELEV. TYPICAL**  
 SCALE: 3/8" = 1'-0"



**24 NURSE KIOSK TYP**  
 SCALE: 3/8" = 1'-0"



**23 NURSE STATION (SUNROOM) TYPICAL**  
 SCALE: 3/8" = 1'-0"



**22 CHART 132A & 242A SOUTH**  
 SCALE: 3/8" = 1'-0"

Seat:

No.	Date	Description

**Key Plan:**