

**Owner:** **Sanpete County Memorial Hospital**  
500 10th St. | P.O. Box 3011  
Gillette, WY 82716  
P.O. Box 3011  
Gillette, WY 82717  
Ph: 307.688.1000

**Civil Engineer:** **PCA Engineering, Inc.**  
P.O. Box 2185  
4506 Wigham Blvd.  
P.O. Box 3303  
Ph: 307.687.6600  
Contact: Clark Sanders

**Structural Engineer:** **JB Associates**  
7080 E. Bellevue Ave., Suite 250  
Greenwood Village, CO 80111  
Ph: 303.839.1963  
Contact: Steve Jirsa

**Mechanical/Plumbing Engineer:** **Giver & Associates, Inc.**  
738 S. Xenon Court, Suite 201  
Lakewood, CO 80228  
Ph: 303.716.1270  
Contact: Jeff Given

**Electrical Engineer:** **Alber Engineering**  
1475 S. Broadway  
Suite 300  
Ph: 303.736.2739  
Contact: Jerry Alber

**Interior Designer:** **LDL Design, Inc.**  
5650 DTC Parkway, Suite 100  
Englewood, CO 80111  
Ph: 303.773.0436  
Contact: Mary Lou Parham

**Food Service:** **United Restaurant Supply, Inc.**  
725 Clark Place  
Chloro, CO 80915  
Ph: 303.736.3828  
Contact: Jon Bluhm

**Landscape Architect:** **LA Landscape Design, Inc.**  
517 7th Street  
Rapid City, SD 57701  
Ph: 605.342.9470  
Contact: Erik Heikes

**General Notes:**  
1. ALL DIMENSIONS INDICATED ARE MEASURED FROM FACE OF FINISH UNLESS OTHERWISE NOTED.  
2. TOLERANCES FOR BUILT-IN ITEMS, INCLUDING CASEWORK, MILLWORK, APPLIANCES, ETC., MUST BE FIELD COORDINATED TO ENSURE ADEQUATE FIT AND PROPER CLEARANCES.  
3. ALL DIMENSIONS INDICATED ARE MEASURED FROM FACE OF FINISH UNLESS OTHERWISE NOTED.  
4. ALL DIMENSIONS INDICATED ARE MEASURED FROM FACE OF FINISH UNLESS OTHERWISE NOTED.  
5. ALL DIMENSIONS INDICATED ARE MEASURED FROM FACE OF FINISH UNLESS OTHERWISE NOTED.  
6. PROVIDE WOOD BLOCKING OR METAL STRAP WITHIN THE WALL CAVITY, AS REQUIRED FOR THE INSTALLATION OF TOILET ACCESSORIES, GRAB BARS, HANDRAILS, LEAN RAILS, CABINETS, WINDOW TREATMENTS, DOOR FRAMES, ETC..  
7. REFER TO THE TYPICAL MOUNTING HEIGHTS DIAGRAM ON SHEET A-807 FOR MOUNTING HEIGHTS OF ACCESSORIES AND DEVICES.  
8. REFER TO THE ROOM FINISH SCHEDULE AND INTERIOR DESIGN DRAWING FOR ALL FINISHES THROUGHOUT THE BUILDING.  
9. REFER TO SHEET A-890 FOR MOUNTING PROFILES.  
10. REFER TO THE ELECTRICAL DRAWINGS FOR LIGHT FIXTURE TYPES AND MOUNTING REQUIREMENTS.  
11. COUNTERTOPS THAT ARE INDICATED TO BE AT 34" MEASURED FROM THE FINISH FLOOR TO THE TOP OF THE COUNTER TOP. FINISHES ON THE TOP OF THE COUNTER TOP MAY REQUIRE CUSTOM CABINETRY TO COMPLY WITH ACCESSIBILITY GUIDELINES, UNLESS CONTRACTOR CAN DEMONSTRATE AND ALTERNATE METHOD OF COMPLIANCE.  
12. VALVES, DISCONNECTS, SWITCHES, DRINKS, ETC. REQUIRED AS PART OF THE INTERIOR OF THE CABINET TO ALLOW EASY ACCESS.  
13. ALL OPERABLE CABINET DOORS AND DRAWERS (WHETHER SHOWN OR NOT) ARE TO RECEIVE A PULL PER SPECIFICATIONS.  
14. PROVIDE @ 2" GROOMMET FOR EACH KNEE SPACE AT DESK COUNTERTOPS. LOCATION TO BE DETERMINED.

**Interior Elevation Key Notes:**  
1. LIGHT FIXTURE, RE. ELECTRICAL  
2. WALL BASE, RE. INT. FINISH PLANS  
3. REFRIGERATOR, RE. SPECIFICATIONS  
4. WASHER, RE. SPECIFICATIONS  
5. DRYER, RE. SPECIFICATIONS  
6. WALL OVEN, RE. SPECIFICATIONS  
7. DISHWASHER, RE. SPECIFICATIONS  
8. WALL MICROWAVE, RE. SPECIFICATIONS  
9. DOOR, RE. DOOR SCHEDULE  
10. PRE-MANUFACTURED CABINETRY, RE. SPECIFICATIONS FOR DOOR STYLE, FINISH, ETC.  
11. PLASTIC LAMINATE COUNTER TOP, RE. INT. FINISH SPECIFICATIONS  
12. GRANITE/QUARTZ COUNTER TOP, RE. INT. FINISH SPECIFICATIONS  
13. SHOWER, RE. SPECIFICATIONS  
14. INTERIOR WALL TILE, RE. INT. FINISH SPECIFICATIONS  
15. CEILING, RE. REFLECTED CEILING PLANS  
16. WOOD BLOCKING OR METAL STRAP AT CONTRACTORS OPTION FOR FUTURE BAR INSTALLATION  
17. SHOWER CURTAIN ROD  
18. FINISHED END PANEL TO MATCH CASEWORK, TYP.  
19. GLASS PANELS  
20. CLOSET ROD & SHELF  
21. REPLACE, RE. SPECIFICATIONS  
22. CHAIRRAIL, RE. 17A-890 FOR MOUNTING PROFILES  
23. HANDRAIL, RE. 17A-890 FOR MOUNTING PROFILES  
24. HAND HELD SHOWER HEAD AND SHOWER CONTROL TAIL CABINET  
25. FOLD UP SHOWER SEAT  
26. BATH TUB, RE. SPECIFICATIONS  
27. GYP. BD. LIGHT COVE  
28. HOOD, RE. SPECIFICATIONS  
29. GLASS FRONT CABINETS  
30. LOCKERS, RE. SPECIFICATIONS  
31. HARDWOOD VENEER FINISHED BACK PANEL TO MATCH CASEWORK, TYP.  
32. TV BY OWNER  
33. TV BY OWNER  
34. STONE SUB SURROUND, RE. INT. SPECIFICATIONS  
35. PLUMBING FIXTURE, RE. SPECIFICATIONS  
36. WOOD VENEER  
37. FTL, GYP. BD.  
38. GLASS PANEL W/ WOOD TRIM, RE. INT. WINDOW ELEVS  
39. PLASTIC LAMINATE, RE. INT. FINISH SPECIFICATIONS  
40. QUARTZ VENEER  
41. LOCK AT CABINETS/DRAWERS, ALL LOCKS TO BE KEYS ALIKE  
42. COMMERCIAL KITCHEN EQUIP., RE. FOOD SERVICE DWGS  
43. CROWN MOULDING  
44. FILLER AS NECESSARY  
45. SOFFIT @ CABINETS TO FOLLOW LINE OF CROWN @ WALL CABINETS  
46. 2" DEEP CABINET OVER WOOD/MICROWAVE APPLIANCE COMB. CABINET MANUFACTURER (SEE SFRONT PANELS & TRIMS RE. SFRONT)

**Key Plan:**

No.	Date	Add/Description

**General Notes:**  
1. ALL DIMENSIONS INDICATED ARE MEASURED FROM FACE OF FINISH UNLESS OTHERWISE NOTED.  
2. TOLERANCES FOR BUILT-IN ITEMS, INCLUDING CASEWORK, MILLWORK, APPLIANCES, ETC., MUST BE FIELD COORDINATED TO ENSURE ADEQUATE FIT AND PROPER CLEARANCES.  
3. ALL DIMENSIONS INDICATED ARE MEASURED FROM FACE OF FINISH UNLESS OTHERWISE NOTED.  
4. ALL DIMENSIONS INDICATED ARE MEASURED FROM FACE OF FINISH UNLESS OTHERWISE NOTED.  
5. ALL DIMENSIONS INDICATED ARE MEASURED FROM FACE OF FINISH UNLESS OTHERWISE NOTED.  
6. PROVIDE WOOD BLOCKING OR METAL STRAP WITHIN THE WALL CAVITY, AS REQUIRED FOR THE INSTALLATION OF TOILET ACCESSORIES, GRAB BARS, HANDRAILS, LEAN RAILS, CABINETS, WINDOW TREATMENTS, DOOR FRAMES, ETC..  
7. REFER TO THE TYPICAL MOUNTING HEIGHTS DIAGRAM ON SHEET A-807 FOR MOUNTING HEIGHTS OF ACCESSORIES AND DEVICES.  
8. REFER TO THE ROOM FINISH SCHEDULE AND INTERIOR DESIGN DRAWING FOR ALL FINISHES THROUGHOUT THE BUILDING.  
9. REFER TO SHEET A-890 FOR MOUNTING PROFILES.  
10. REFER TO THE ELECTRICAL DRAWINGS FOR LIGHT FIXTURE TYPES AND MOUNTING REQUIREMENTS.  
11. COUNTERTOPS THAT ARE INDICATED TO BE AT 34" MEASURED FROM THE FINISH FLOOR TO THE TOP OF THE COUNTER TOP. FINISHES ON THE TOP OF THE COUNTER TOP MAY REQUIRE CUSTOM CABINETRY TO COMPLY WITH ACCESSIBILITY GUIDELINES, UNLESS CONTRACTOR CAN DEMONSTRATE AND ALTERNATE METHOD OF COMPLIANCE.  
12. VALVES, DISCONNECTS, SWITCHES, DRINKS, ETC. REQUIRED AS PART OF THE INTERIOR OF THE CABINET TO ALLOW EASY ACCESS.  
13. ALL OPERABLE CABINET DOORS AND DRAWERS (WHETHER SHOWN OR NOT) ARE TO RECEIVE A PULL PER SPECIFICATIONS.  
14. PROVIDE @ 2" GROOMMET FOR EACH KNEE SPACE AT DESK COUNTERTOPS. LOCATION TO BE DETERMINED.

**Interior Elevation Key Notes:**  
1. LIGHT FIXTURE, RE. ELECTRICAL  
2. WALL BASE, RE. INT. FINISH PLANS  
3. REFRIGERATOR, RE. SPECIFICATIONS  
4. WASHER, RE. SPECIFICATIONS  
5. DRYER, RE. SPECIFICATIONS  
6. WALL OVEN, RE. SPECIFICATIONS  
7. DISHWASHER, RE. SPECIFICATIONS  
8. WALL MICROWAVE, RE. SPECIFICATIONS  
9. DOOR, RE. DOOR SCHEDULE  
10. PRE-MANUFACTURED CABINETRY, RE. SPECIFICATIONS FOR DOOR STYLE, FINISH, ETC.  
11. PLASTIC LAMINATE COUNTER TOP, RE. INT. FINISH SPECIFICATIONS  
12. GRANITE/QUARTZ COUNTER TOP, RE. INT. FINISH SPECIFICATIONS  
13. SHOWER, RE. SPECIFICATIONS  
14. INTERIOR WALL TILE, RE. INT. FINISH SPECIFICATIONS  
15. CEILING, RE. REFLECTED CEILING PLANS  
16. WOOD BLOCKING OR METAL STRAP AT CONTRACTORS OPTION FOR FUTURE BAR INSTALLATION  
17. SHOWER CURTAIN ROD  
18. FINISHED END PANEL TO MATCH CASEWORK, TYP.  
19. GLASS PANELS  
20. CLOSET ROD & SHELF  
21. REPLACE, RE. SPECIFICATIONS  
22. CHAIRRAIL, RE. 17A-890 FOR MOUNTING PROFILES  
23. HANDRAIL, RE. 17A-890 FOR MOUNTING PROFILES  
24. HAND HELD SHOWER HEAD AND SHOWER CONTROL TAIL CABINET  
25. FOLD UP SHOWER SEAT  
26. BATH TUB, RE. SPECIFICATIONS  
27. GYP. BD. LIGHT COVE  
28. HOOD, RE. SPECIFICATIONS  
29. GLASS FRONT CABINETS  
30. LOCKERS, RE. SPECIFICATIONS  
31. HARDWOOD VENEER FINISHED BACK PANEL TO MATCH CASEWORK, TYP.  
32. TV BY OWNER  
33. TV BY OWNER  
34. STONE SUB SURROUND, RE. INT. SPECIFICATIONS  
35. PLUMBING FIXTURE, RE. SPECIFICATIONS  
36. WOOD VENEER  
37. FTL, GYP. BD.  
38. GLASS PANEL W/ WOOD TRIM, RE. INT. WINDOW ELEVS  
39. PLASTIC LAMINATE, RE. INT. FINISH SPECIFICATIONS  
40. QUARTZ VENEER  
41. LOCK AT CABINETS/DRAWERS, ALL LOCKS TO BE KEYS ALIKE  
42. COMMERCIAL KITCHEN EQUIP., RE. FOOD SERVICE DWGS  
43. CROWN MOULDING  
44. FILLER AS NECESSARY  
45. SOFFIT @ CABINETS TO FOLLOW LINE OF CROWN @ WALL CABINETS  
46. 2" DEEP CABINET OVER WOOD/MICROWAVE APPLIANCE COMB. CABINET MANUFACTURER (SEE SFRONT PANELS & TRIMS RE. SFRONT)

**Key Plan:**

No.	Date	Add/Description

**LBA Project Number:** 2012.3000  
**Date:** October 31, 2013

## INTERIOR ELEVATIONS

**Drawn By:** Author  
ARCHITECT ©

**GENERAL NOTES:**  
1. ALL DIMENSIONS INDICATED ARE MEASURED FROM FACE OF FINISH UNLESS OTHERWISE NOTED.  
2. TOLERANCES FOR BUILT-IN ITEMS, INCLUDING CASEWORK, MILLWORK, APPLIANCES, ETC., MUST BE FIELD COORDINATED TO ENSURE ADEQUATE FIT AND PROPER CLEARANCES.  
3. ALL DIMENSIONS INDICATED ARE MEASURED FROM FACE OF FINISH UNLESS OTHERWISE NOTED.  
4. ALL DIMENSIONS INDICATED ARE MEASURED FROM FACE OF FINISH UNLESS OTHERWISE NOTED.  
5. ALL DIMENSIONS INDICATED ARE MEASURED FROM FACE OF FINISH UNLESS OTHERWISE NOTED.  
6. PROVIDE WOOD BLOCKING OR METAL STRAP WITHIN THE WALL CAVITY, AS REQUIRED FOR THE INSTALLATION OF TOILET ACCESSORIES, GRAB BARS, HANDRAILS, LEAN RAILS, CABINETS, WINDOW TREATMENTS, DOOR FRAMES, ETC..  
7. REFER TO THE TYPICAL MOUNTING HEIGHTS DIAGRAM ON SHEET A-807 FOR MOUNTING HEIGHTS OF ACCESSORIES AND DEVICES.  
8. REFER TO THE ROOM FINISH SCHEDULE AND INTERIOR DESIGN DRAWING FOR ALL FINISHES THROUGHOUT THE BUILDING.  
9. REFER TO SHEET A-890 FOR MOUNTING PROFILES.  
10. REFER TO THE ELECTRICAL DRAWINGS FOR LIGHT FIXTURE TYPES AND MOUNTING REQUIREMENTS.  
11. COUNTERTOPS THAT ARE INDICATED TO BE AT 34" MEASURED FROM THE FINISH FLOOR TO THE TOP OF THE COUNTER TOP. FINISHES ON THE TOP OF THE COUNTER TOP MAY REQUIRE CUSTOM CABINETRY TO COMPLY WITH ACCESSIBILITY GUIDELINES, UNLESS CONTRACTOR CAN DEMONSTRATE AND ALTERNATE METHOD OF COMPLIANCE.  
12. VALVES, DISCONNECTS, SWITCHES, DRINKS, ETC. REQUIRED AS PART OF THE INTERIOR OF THE CABINET TO ALLOW EASY ACCESS.  
13. ALL OPERABLE CABINET DOORS AND DRAWERS (WHETHER SHOWN OR NOT) ARE TO RECEIVE A PULL PER SPECIFICATIONS.  
14. PROVIDE @ 2" GROOMMET FOR EACH KNEE SPACE AT DESK COUNTERTOPS. LOCATION TO BE DETERMINED.

**Interior Elevation Key Notes:**  
1. LIGHT FIXTURE, RE. ELECTRICAL  
2. WALL BASE, RE. INT. FINISH PLANS  
3. REFRIGERATOR, RE. SPECIFICATIONS  
4. WASHER, RE. SPECIFICATIONS  
5. DRYER, RE. SPECIFICATIONS  
6. WALL OVEN, RE. SPECIFICATIONS  
7. DISHWASHER, RE. SPECIFICATIONS  
8. WALL MICROWAVE, RE. SPECIFICATIONS  
9. DOOR, RE. DOOR SCHEDULE  
10. PRE-MANUFACTURED CABINETRY, RE. SPECIFICATIONS FOR DOOR STYLE, FINISH, ETC.  
11. PLASTIC LAMINATE COUNTER TOP, RE. INT. FINISH SPECIFICATIONS  
12. GRANITE/QUARTZ COUNTER TOP, RE. INT. FINISH SPECIFICATIONS  
13. SHOWER, RE. SPECIFICATIONS  
14. INTERIOR WALL TILE, RE. INT. FINISH SPECIFICATIONS  
15. CEILING, RE. REFLECTED CEILING PLANS  
16. WOOD BLOCKING OR METAL STRAP AT CONTRACTORS OPTION FOR FUTURE BAR INSTALLATION  
17. SHOWER CURTAIN ROD  
18. FINISHED END PANEL TO MATCH CASEWORK, TYP.  
19. GLASS PANELS  
20. CLOSET ROD & SHELF  
21. REPLACE, RE. SPECIFICATIONS  
22. CHAIRRAIL, RE. 17A-890 FOR MOUNTING PROFILES  
23. HANDRAIL, RE. 17A-890 FOR MOUNTING PROFILES  
24. HAND HELD SHOWER HEAD AND SHOWER CONTROL TAIL CABINET  
25. FOLD UP SHOWER SEAT  
26. BATH TUB, RE. SPECIFICATIONS  
27. GYP. BD. LIGHT COVE  
28. HOOD, RE. SPECIFICATIONS  
29. GLASS FRONT CABINETS  
30. LOCKERS, RE. SPECIFICATIONS  
31. HARDWOOD VENEER FINISHED BACK PANEL TO MATCH CASEWORK, TYP.  
32. TV BY OWNER  
33. TV BY OWNER  
34. STONE SUB SURROUND, RE. INT. SPECIFICATIONS  
35. PLUMBING FIXTURE, RE. SPECIFICATIONS  
36. WOOD VENEER  
37. FTL, GYP. BD.  
38. GLASS PANEL W/ WOOD TRIM, RE. INT. WINDOW ELEVS  
39. PLASTIC LAMINATE, RE. INT. FINISH SPECIFICATIONS  
40. QUARTZ VENEER  
41. LOCK AT CABINETS/DRAWERS, ALL LOCKS TO BE KEYS ALIKE  
42. COMMERCIAL KITCHEN EQUIP., RE. FOOD SERVICE DWGS  
43. CROWN MOULDING  
44. FILLER AS NECESSARY  
45. SOFFIT @ CABINETS TO FOLLOW LINE OF CROWN @ WALL CABINETS  
46. 2" DEEP CABINET OVER WOOD/MICROWAVE APPLIANCE COMB. CABINET MANUFACTURER (SEE SFRONT PANELS & TRIMS RE. SFRONT)

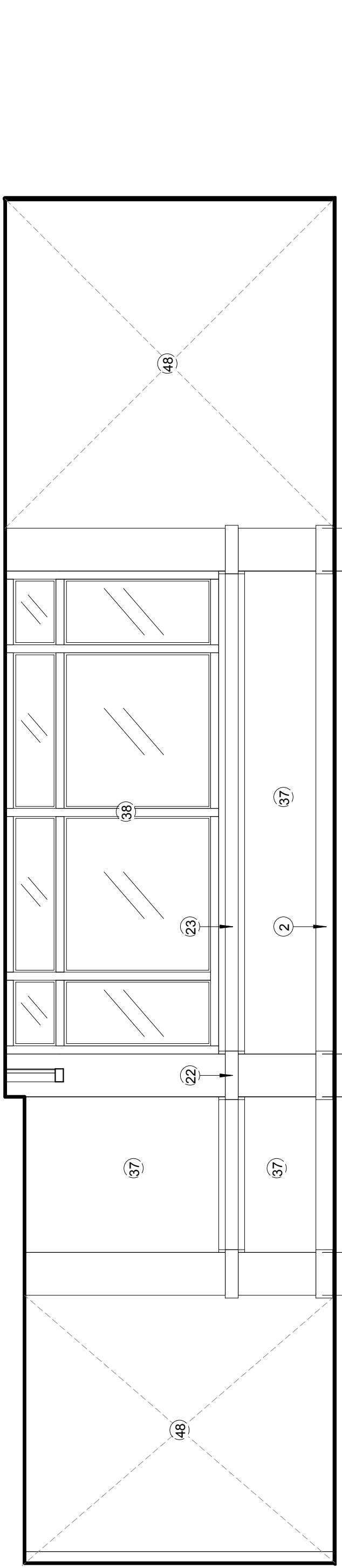
**Key Plan:**

No.	Date	Add/Description

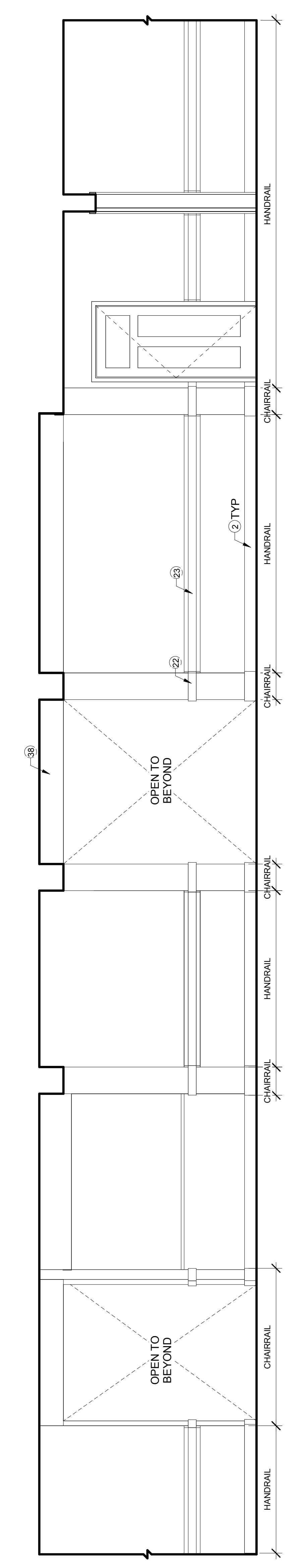
**LBA Project Number:** 2012.3000  
**Date:** October 31, 2013

## INTERIOR ELEVATIONS

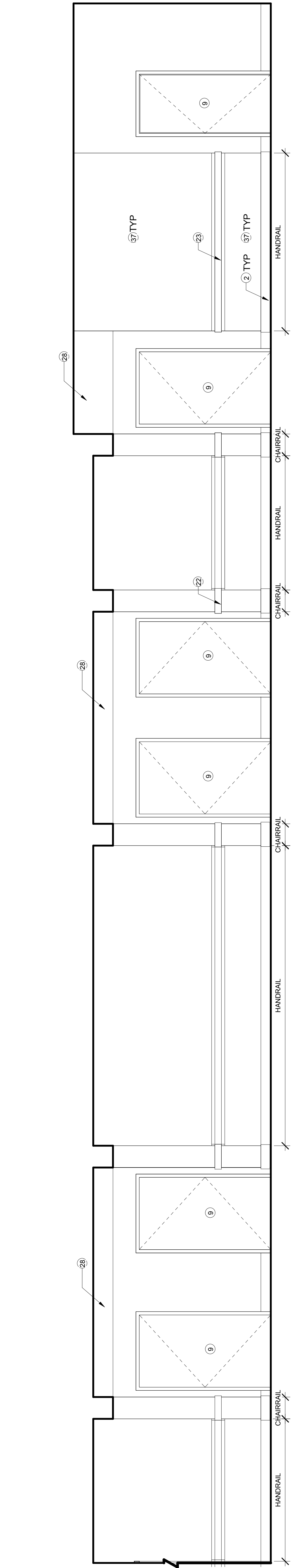
**Drawn By:** Author  
ARCHITECT ©



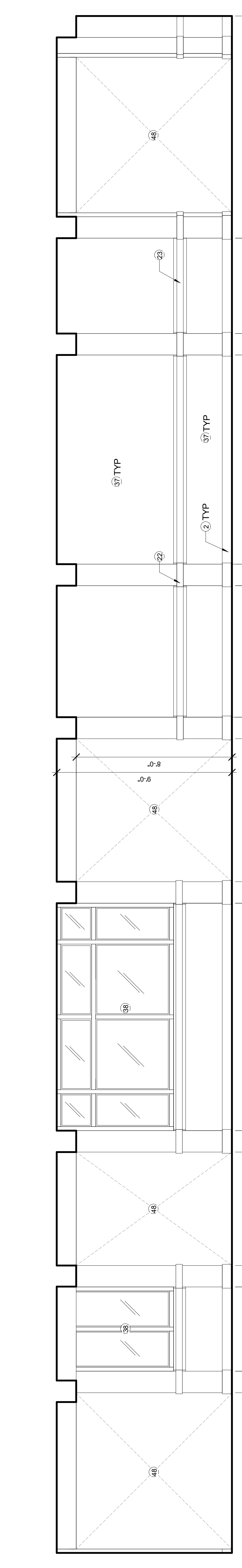
**1 KITCHEN 115 CORRIDOR ACCENT WALL SOUTH**  
SCALE: 3/8" = 1'-0"



**2 CORRIDOR INTERIOR ELEVATION - TYPICAL**  
SCALE: 3/8" = 1'-0"



**3 CORRIDOR INTERIOR ELEVATION CONTINUED - TYPICAL**  
SCALE: 3/8" = 1'-0"



**4 CORRIDOR INTERIOR ELEVATION NORTH - SOUTH - TYPICAL**  
SCALE: 3/8" = 1'-0"