

Owner:
 Campbell County Memorial Hospital
 501 South Burma Ave.
 Gillette, WY 82716
 P.O. Box 3011
 Gillette, WY 82717
 Ph. 307.688.1000

Civil Engineer:
 PCA Engineering, Inc.
 P.O. Box 2185
 4506 Wigwam Blvd.
 Gillette, WY 82718
 Ph. 307.687.0800
 Contact: Clark Sanders

Structural Engineer:
 Jirsa Hedrick & Associates
 7000 E. Bellevue Ave. Suite 250
 Greenwood Village, CO 80111
 Ph. 303.839.1963
 Contact: Steve Jirsa

Mechanical/Plumbing Engineer:
 Given & Associates, Inc.
 735 S. Xenon Court, Suite 201
 Lakewood, CO 80228
 Ph. 303.716.1270
 Contact: Jeff Given

Electrical Engineer:
 Alber Engineering
 5173 Oak Hollow Drive
 Morrison, CO 80465
 Ph. 303.736.2739
 Contact: Jerry Alber

Interior Design:
 LBA Interiors
 5650 DTC Parkway, Suite 100
 Englewood, CO 80111
 Ph. 303.773.0436
 Contact: Mary Lou Parham

Food Service:
 United Restaurant Supply, Inc.
 725 Clark Place
 Colorado Springs, CO 80915
 Ph. 719.574.3220
 Contact: Jon Bluhm

Landscape Architect:
 Four Front Design, Inc.
 517 7th Street
 Rapid City, SD 57701
 Ph. 605.342.9470
 Contact: Eirik Heikes

No.	Date	Description
1	05/17/2013	Design Development
2	07/03/2013	Foundation Permit Issue
3	09/06/2013	Bid Pack #2 - Foundation & Steel
4	10/31/2013	Construction Documents

Seal: _____

Key Plan: _____

LBA Project Number: 2012.3000
 Date: October 31, 2013

WINDOW SCHEDULE & LEGEND

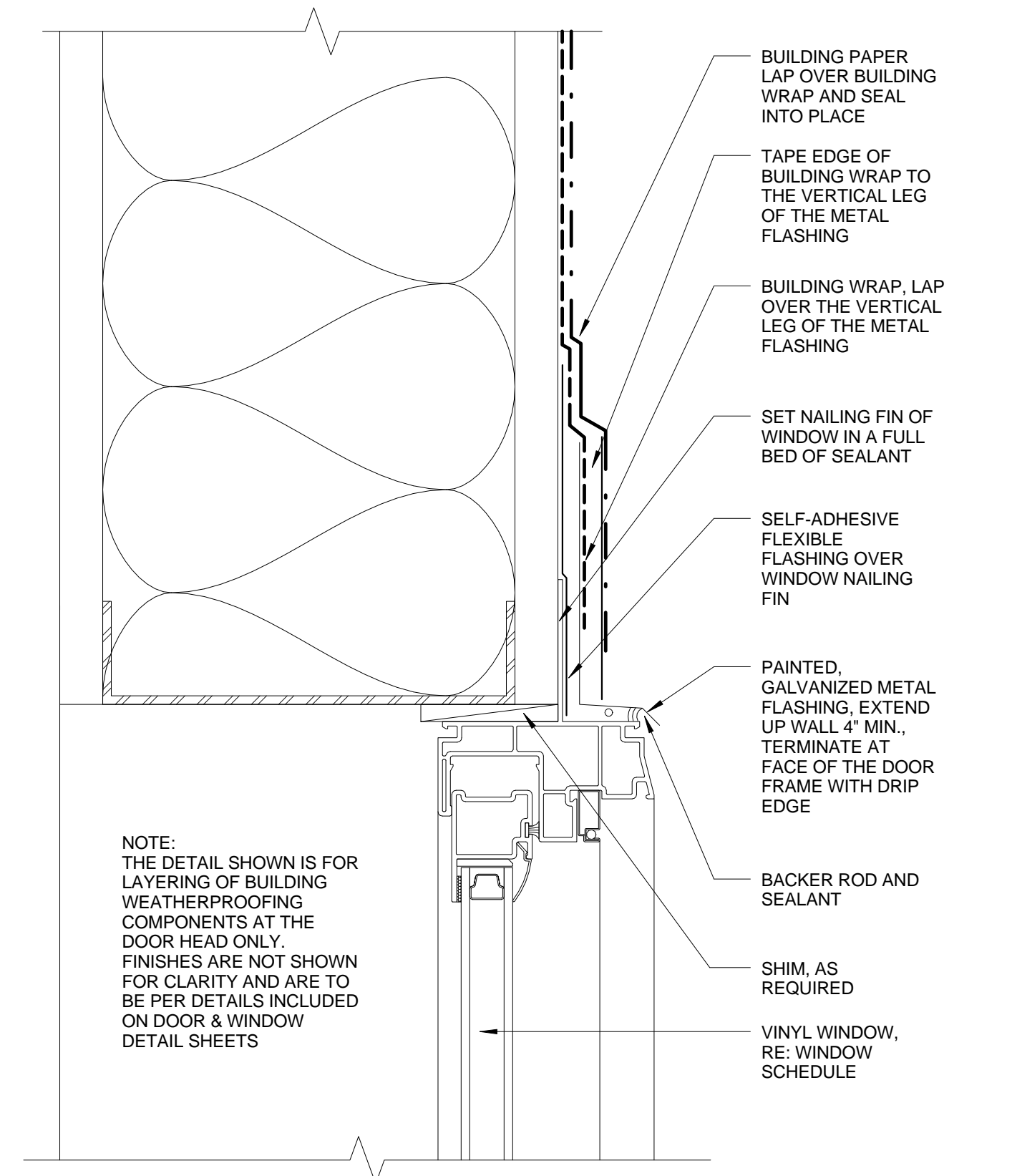
WINDOW TAGS IDENTIFIER:	WINDOW GLAZING IDENTIFIER:
WINDOW ELEVATION WINDOW TYPE INTERIOR WINDOW TYPES: AL - ALUMINUM FRAMED R - REDI FRAMED W - WOOD FRAMED EXTERIOR WINDOW TYPES: S - STOREFRONT SYSTEM V - VINYL FRAMED	*HATCH PATTERNS ON WINDOW ELEVATIONS ARE FOR REPRESENTATION ONLY. USE HATCH PATTERNS IN THE WINDOW LEGEND TO DETERMINE THE GLAZING TYPE WHEN THE WINDOW SCHEDULE REFERS TO THE ELEVATIONS. - CLEAR LOW 'E' VISION GLASS - SPANDEL GLAZING - ELECTROCHROMIC GLAZING T - TEMPERED GLAZING TI - TEMPERED/INSULATED GLAZING MATERIAL TYPE ABBREVIATIONS: HC HOLLOW CORE ST STEEL SC SOLID CORE WD WOOD HM HOLLOW METAL FG FIBERGLASS P PAINTED AL ALUMINUM FF FACTORY FINISH GL GLASS

GENERAL NOTES:

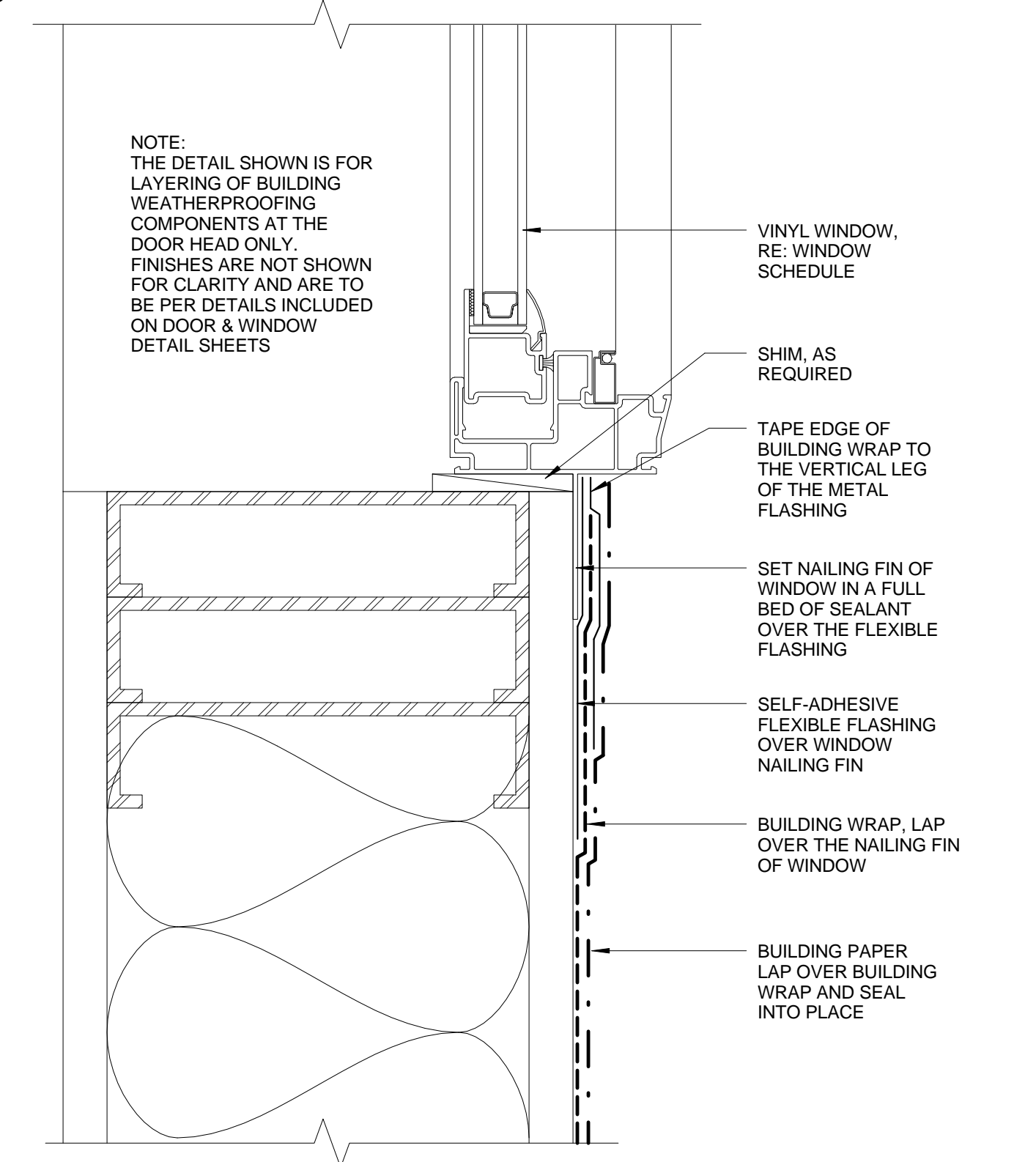
- INTERNAL GRIDS AT GLAZING AS INDICATED.
- GLAZING TO BE INSULATED AT ALL EXTERIOR DOORS AND WINDOWS AND AS INDICATED ON SCHEDULE.
- ALL WINDOWS AND GLAZING SHALL COMPLY WITH THE IBC AS WELL AS ALL OTHER APPLICABLE CODES AND REGULATIONS.
- DOORS, BARROWLITE WINDOWS AND FRAMES ARE TO BE APPROPRIATELY LABELED FOR SMOKE AND/OR FIRE. RE: WINDOW SCHEDULE AND CODE COMPLIANCE PLANS.
- ALL OPERABLE WINDOWS ARE TO BE PROVIDED AND HAVE INSTALLED LIMIT STOPS WITH RESTRICT THE OPENABLE HEIGHT TO 6" MAX.
- WALL ASSEMBLY SHOWN AS TYPICAL U.O.N. ON PLANS. RE: FLOOR PLANS & WALL ASSEMBLIES FOR WALL TYPE & ASSEMBLY REFERENCE.
- MAINTAIN POSITIVE SLOPE ON HORIZONTAL LEG OF FLASHING. TYPICAL ALL LOCATIONS; RE: DETAILS.

WINDOW SCHEDULE								
WINDOW DESIGNATION	WINDOW SIZE	WINDOW TYPE	GLASS TYPE	GLASS RATING	FRAME MATL	FRAME RATING	FRAME FINISH	REMARKS
A1	SEE ELEVATION	STOREFRONT	SEE ELEVATION	N/A	AL	N/A	FACTORY	INTERIOR
A2	SEE ELEVATION	STOREFRONT	SEE ELEVATION	N/A	AL	N/A	FACTORY	INTERIOR
A3	SEE ELEVATION	STOREFRONT	SEE ELEVATION	N/A	AL	N/A	FACTORY	INTERIOR
A4	SEE ELEVATION	STOREFRONT	SEE ELEVATION	N/A	AL	N/A	FACTORY	INTERIOR
A5	SEE ELEVATION	STOREFRONT	SEE ELEVATION	N/A	AL	N/A	FACTORY	INTERIOR
A6	SEE ELEVATION	STOREFRONT	SEE ELEVATION	N/A	AL	N/A	FACTORY	INTERIOR
R1	1'-0" X 6'-0"	FIXED	CLEAR	N/A	REDI	N/A	PAINT	
R2	3'-0" X 6'-0"	FIXED	CLEAR	N/A	REDI	N/A	PAINT	
W1	SEE ELEVATION	FIXED	CLEAR	N/A	WOOD	N/A	STAIN	
W2	SEE ELEVATION	FIXED	CLEAR	N/A	WOOD	N/A	STAIN	
W3	SEE ELEVATION	FIXED	CLEAR	N/A	WOOD	N/A	STAIN	
W4	SEE ELEVATION	FIXED	CLEAR	N/A	WOOD	N/A	STAIN	
W5	SEE ELEVATION	FIXED	CLEAR	N/A	WOOD	N/A	STAIN	
W6	SEE ELEVATION	FIXED	CLEAR	N/A	WOOD	N/A	STAIN	
W7	SEE ELEVATION	FIXED	CLEAR	N/A	WOOD	N/A	STAIN	
W8	NOT USED							
W9	SEE ELEVATION	FIXED	CLEAR	N/A	WOOD	N/A	STAIN	
W10	SEE ELEVATION	FIXED	CLEAR	N/A	WOOD	N/A	STAIN	
W11	SEE ELEVATION	FIXED	CLEAR	N/A	WOOD	N/A	STAIN	
W12	SEE ELEVATION	FIXED	CLEAR	N/A	WOOD	N/A	STAIN	
W13	SEE ELEVATION	FIXED	CLEAR	N/A	WOOD	N/A	STAIN	
W14	SEE ELEVATION	FIXED	CLEAR	N/A	WOOD	N/A	STAIN	
W15	SEE ELEVATION	FIXED	CLEAR	N/A	WOOD	N/A	STAIN	
W16	SEE ELEVATION	FIXED	CLEAR	N/A	WOOD	N/A	STAIN	

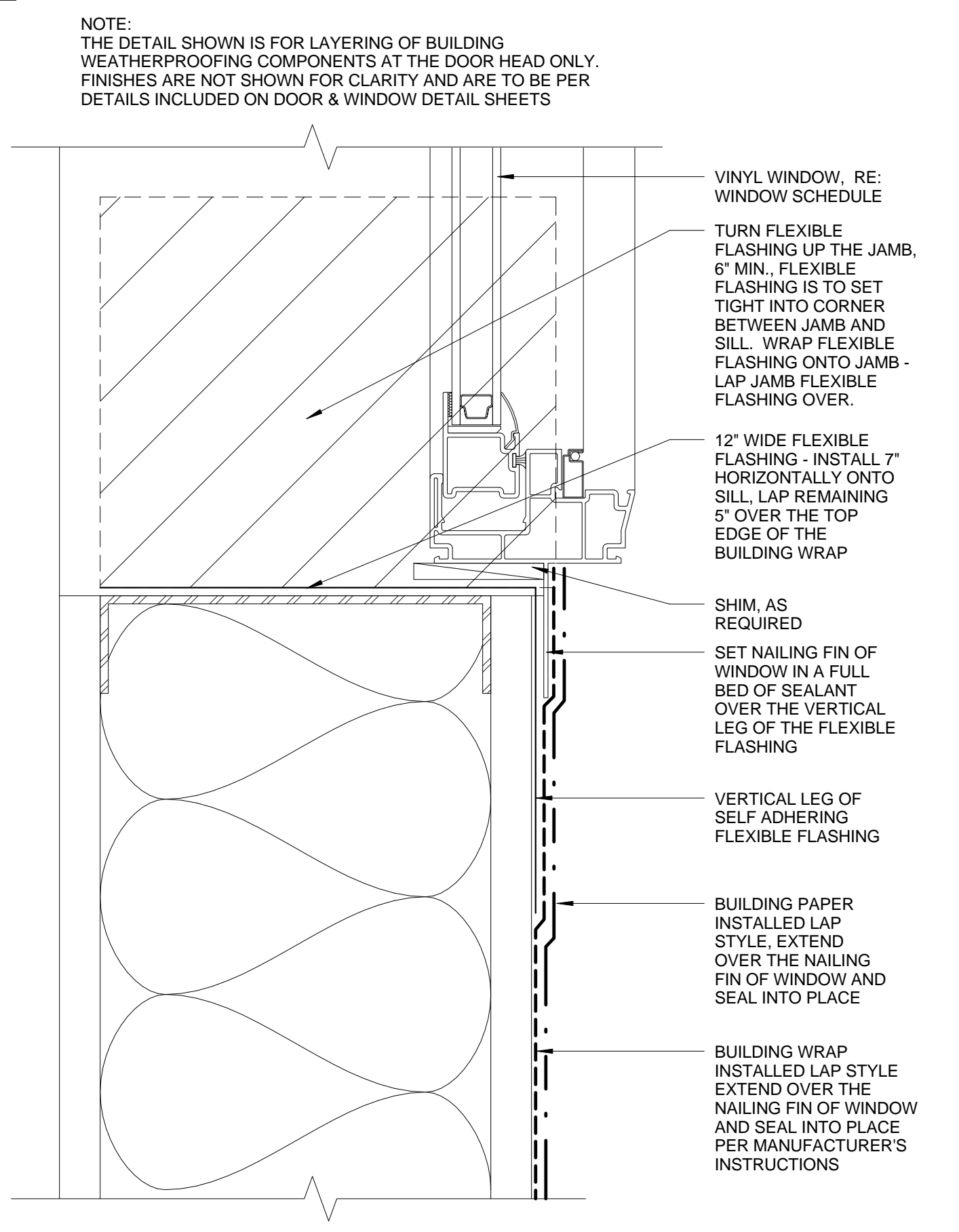
WINDOW SCHEDULE								
WINDOW DESIGNATION	WINDOW SIZE	WINDOW TYPE	GLASS TYPE	GLASS RATING	FRAME MATL	FRAME RATING	FRAME FINISH	REMARKS
S1	SEE ELEVATION	STOREFRONT	SEE ELEVATION	N/A	AL	N/A	FACTORY	
S2	SEE ELEVATION	STOREFRONT	SEE ELEVATION	N/A	AL	N/A	FACTORY	
S3	SEE ELEVATION	STOREFRONT	SEE ELEVATION	N/A	AL	N/A	FACTORY	
S4	SEE ELEVATION	STOREFRONT	SEE ELEVATION	N/A	AL	N/A	FACTORY	
S5	SEE ELEVATION	STOREFRONT	SEE ELEVATION	N/A	AL	N/A	FACTORY	
S6	SEE ELEVATION	STOREFRONT	SEE ELEVATION	N/A	AL	N/A	FACTORY	
S7	SEE ELEVATION	STOREFRONT	SEE ELEVATION	N/A	AL	N/A	FACTORY	
S8	SEE ELEVATION	STOREFRONT	SEE ELEVATION	N/A	AL	N/A	FACTORY	
S9	SEE ELEVATION	STOREFRONT	SEE ELEVATION	N/A	AL	N/A	FACTORY	
S10	SEE ELEVATION	STOREFRONT	SEE ELEVATION	N/A	AL	N/A	FACTORY	
S11	SEE ELEVATION	STOREFRONT	SEE ELEVATION	N/A	AL	N/A	FACTORY	
S12	SEE ELEVATION	STOREFRONT	SEE ELEVATION	N/A	AL	N/A	FACTORY	
S13	SEE ELEVATION	STOREFRONT	SEE ELEVATION	N/A	AL	N/A	FACTORY	
S14	SEE ELEVATION	STOREFRONT	SEE ELEVATION	N/A	AL	N/A	FACTORY	
S15	SEE ELEVATION	STOREFRONT	SEE ELEVATION	N/A	AL	N/A	FACTORY	
S16	SEE ELEVATION	STOREFRONT	SEE ELEVATION	N/A	AL	N/A	FACTORY	
S17	SEE ELEVATION	STOREFRONT	SEE ELEVATION	N/A	AL	N/A	FACTORY	
S18	SEE ELEVATION	STOREFRONT	SEE ELEVATION	N/A	AL	N/A	FACTORY	
S19	SEE ELEVATION	STOREFRONT	SEE ELEVATION	N/A	AL	N/A	FACTORY	
S20	SEE ELEVATION	STOREFRONT	SEE ELEVATION	N/A	AL	N/A	FACTORY	
S21	SEE ELEVATION	STOREFRONT	SEE ELEVATION	N/A	AL	N/A	FACTORY	
S22	SEE ELEVATION	STOREFRONT	SEE ELEVATION	N/A	AL	N/A	FACTORY	
S23	SEE ELEVATION	STOREFRONT	SEE ELEVATION	N/A	AL	N/A	FACTORY	
S24	SEE ELEVATION	STOREFRONT	SEE ELEVATION	N/A	AL	N/A	FACTORY	
S25	SEE ELEVATION	STOREFRONT	SEE ELEVATION	N/A	AL	N/A	FACTORY	
S26	SEE ELEVATION	STOREFRONT	SEE ELEVATION	N/A	AL	N/A	FACTORY	
S27	SEE ELEVATION	STOREFRONT	SEE ELEVATION	N/A	AL	N/A	FACTORY	
S28	SEE ELEVATION	STOREFRONT	SEE ELEVATION	N/A	AL	N/A	FACTORY	
S29	SEE ELEVATION	STOREFRONT	SEE ELEVATION	N/A	AL	N/A	FACTORY	
S30	SEE ELEVATION	STOREFRONT	SEE ELEVATION	N/A	AL	N/A	FACTORY	
S31	SEE ELEVATION	STOREFRONT	SEE ELEVATION	N/A	AL	N/A	FACTORY	
S32	SEE ELEVATION	STOREFRONT	SEE ELEVATION	N/A	AL	N/A	FACTORY	
S33	SEE ELEVATION	STOREFRONT	SEE ELEVATION	N/A	AL	N/A	FACTORY	
S34	SEE ELEVATION	STOREFRONT	SEE ELEVATION	N/A	AL	N/A	FACTORY	
S35	SEE ELEVATION	STOREFRONT	SEE ELEVATION	N/A	AL	N/A	FACTORY	
S36	SEE ELEVATION	STOREFRONT	SEE ELEVATION	N/A	AL	N/A	FACTORY	
S37	SEE ELEVATION	STOREFRONT	SEE ELEVATION	N/A	AL	N/A	FACTORY	
S38	SEE ELEVATION	STOREFRONT	SEE ELEVATION	N/A	AL	N/A	FACTORY	
S39	SEE ELEVATION	STOREFRONT	SEE ELEVATION	N/A	AL	N/A	FACTORY	
S40	SEE ELEVATION	STOREFRONT	SEE ELEVATION	N/A	AL	N/A	FACTORY	
V1	(2) 3'-0" X 5'-0"	SINGLE HUNG	CLEAR/INSULATED	N/A	VINYL	N/A	FACTORY	
V2	(2) 3'-0" X 5'-0"	SINGLE HUNG	CLEAR/INSULATED	N/A	VINYL	N/A	FACTORY	
V3	(2) 3'-0" X 5'-0"	SINGLE HUNG	CLEAR/INSULATED	N/A	VINYL	N/A	FACTORY	
V4	(2) 3'-0" X 5'-0"	SINGLE HUNG	CLEAR/INSULATED	N/A	VINYL	N/A	FACTORY	
V5	(2) 3'-0" X 5'-0"	SINGLE HUNG	CLEAR/INSULATED	N/A	VINYL	N/A	FACTORY	
V6	(2) 3'-0" X 5'-0"	SINGLE HUNG	CLEAR/INSULATED	N/A	VINYL	N/A	FACTORY	
V7	(2) 3'-0" X 5'-0"	SINGLE HUNG	CLEAR/INSULATED	N/A	VINYL	N/A	FACTORY	
V8	(2) 3'-0" X 5'-0"	SINGLE HUNG	CLEAR/INSULATED	N/A	VINYL	N/A	FACTORY	
V9	(2) 3'-0" X 5'-0"	SINGLE HUNG	CLEAR/INSULATED	N/A	VINYL	N/A	FACTORY	
V10	(2) 3'-0" X 5'-0"	SINGLE HUNG	CLEAR/INSULATED	N/A	VINYL	N/A	FACTORY	
V11	(2) 3'-0" X 2'-6"	FIXED	CLEAR/INSULATED	N/A	VINYL	N/A	FACTORY	



3 WEATHERPROOFING DETAIL AT WINDOW HEAD
 SCALE: 6" = 1'-0"



2 WEATHERPROOFING DETAIL AT WINDOW JAMB
 SCALE: 6" = 1'-0"



1 WEATHERPROOFING DETAIL AT WINDOW SILL
 SCALE: 6" = 1'-0"

NOTICE: These documents are instruments of professional service and information contained therein is incomplete unless used in conjunction with Lantz-Boggio's interpretations, decisions, observations and administrations. Use or reproduction of these documents in whole or part without Lantz-Boggio's consent is in violation of common law, copyrights, statutory and other reserved rights. Refer to Act 17 U.S.C., par. 511 (1991), which preempts state and local public records act. Refer to Act 17 U.S.C., par. 301 (1991).