

**PIONEER MANOR**  
 Gillette/Wyoming  
 2012.3000

**Owner:**  
 Campbell County Memorial Hospital  
 501 South Burma Ave.  
 Gillette, WY 82716  
 P.O. Box 3011  
 Gillette, WY 82717  
 Ph. 307.687.0800

**Civil Engineer:**  
 PCA Engineering, Inc.  
 P.O. Box 2185  
 4506 Wigwam Blvd.  
 Gillette, WY 82718  
 Ph. 307.687.0800  
 Contact: Clark Sanders

**Structural Engineer:**  
 Jirsa Hedrick & Associates  
 7000 E. Bellevue Ave. Suite 250  
 Greenwood Village, CO 80111  
 Ph. 303.839.1963  
 Contact: Steve Jirsa

**Mechanical/Plumbing Engineer:**  
 Given & Associates, Inc.  
 735 S. Xenon Court, Suite 201  
 Lakewood, CO 80228  
 Ph. 303.716.1270  
 Contact: Jeff Given

**Electrical Engineer:**  
 Alber Engineering  
 5173 Oak Hollow Drive  
 Morrison, CO 80465  
 Ph. 303.736.2739  
 Contact: Jerry Alber

**Interior Design:**  
 LBA Interiors  
 5650 DTC Parkway, Suite 100  
 Englewood, CO 80111  
 Ph. 303.773.0436  
 Contact: Mary Lou Parham

**Food Service:**  
 United Restaurant Supply, Inc.  
 725 Clark Place  
 Colorado Springs, CO 80915  
 Ph. 719.574.3220  
 Contact: Jon Bluhm

**Landscape Architect:**  
 Four Front Design, Inc.  
 517 7th Street  
 Rapid City, SD 57701  
 Ph. 605.342.9470  
 Contact: Eirik Heikes

No.	Date	Description
1	05/17/2013	Design Development
2	07/03/2013	Foundation Permit Issue
3	09/06/2013	Bid Pack #2 - Foundation & Steel
4	10/31/2013	Construction Documents

Seal:

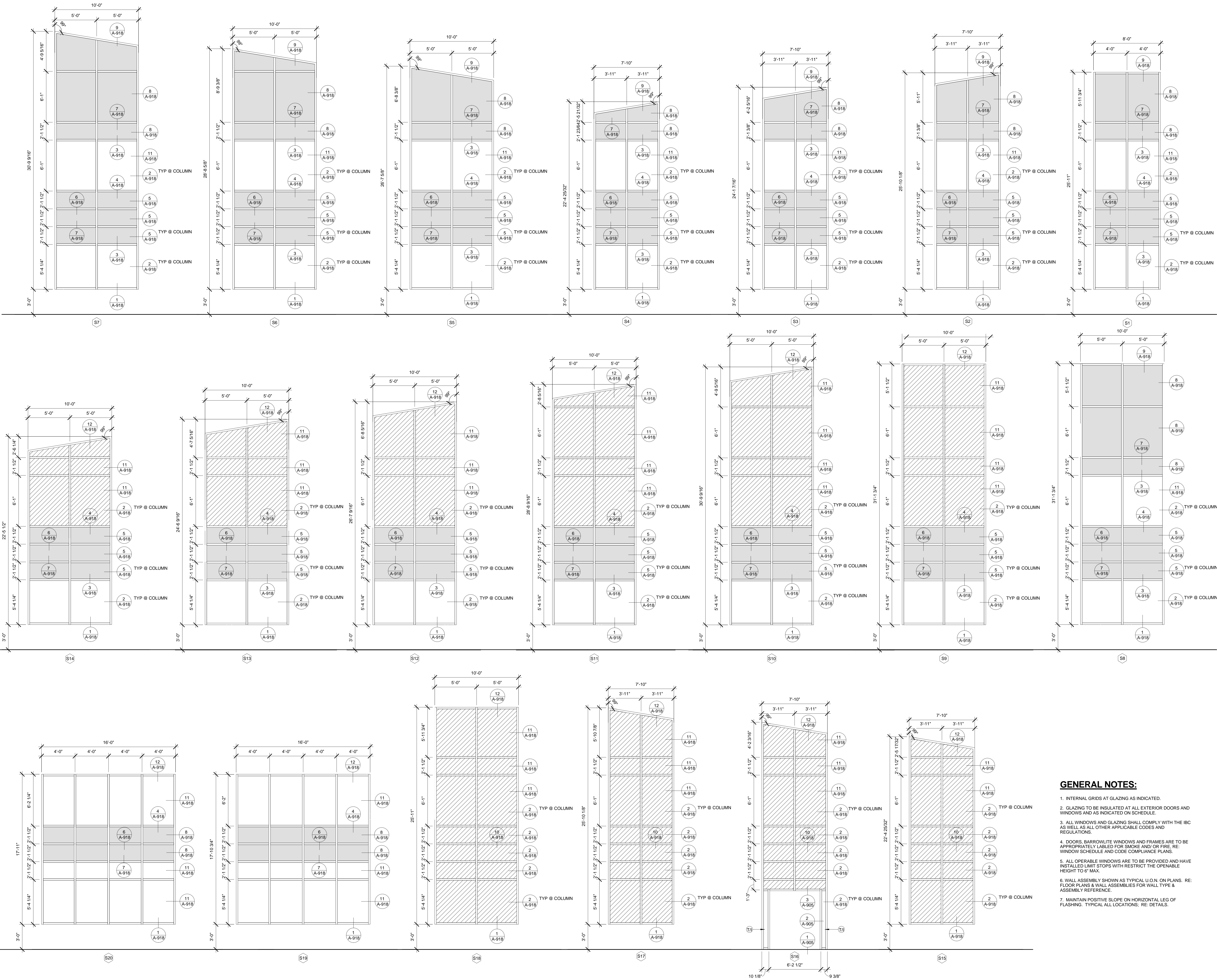
Key Plan:

LBA Project Number: 2012.3000  
 Date: October 31, 2013

**EXT. STOREFRONT WINDOW ELEVATIONS**

**GENERAL NOTES:**

- INTERNAL GRIDS AT GLAZING AS INDICATED.
- GLAZING TO BE INSULATED AT ALL EXTERIOR DOORS AND WINDOWS AND AS INDICATED ON SCHEDULE.
- ALL WINDOWS AND GLAZING SHALL COMPLY WITH THE IBC AS WELL AS ALL OTHER APPLICABLE CODES AND REGULATIONS.
- DOORS, BARROWLITE WINDOWS AND FRAMES ARE TO BE APPROPRIATELY LABELED FOR SMOKE AND/OR FIRE, RE: WINDOW SCHEDULE AND CODE COMPLIANCE PLANS.
- ALL OPERABLE WINDOWS ARE TO BE PROVIDED AND HAVE INSTALLED LIMIT STOPS WITH RESTRICT THE OPENABLE HEIGHT TO 6" MAX.
- WALL ASSEMBLY SHOWN AS TYPICAL U.O.N. ON PLANS. RE: FLOOR PLANS & WALL ASSEMBLIES FOR WALL TYPE & ASSEMBLY REFERENCE.
- MAINTAIN POSITIVE SLOPE ON HORIZONTAL LEG OF FLASHING. TYPICAL ALL LOCATIONS; RE: DETAILS.



NOTICE: These documents are instruments of professional service and information contained therein is incomplete unless used in conjunction with Lantz-Boggio's interpretations, designs, observations and other reserved rights. Refer to Act 17 U.S.C., par. 511 (1991), which prompts state and local public records act. Refer to Act 17 U.S.C., par. 301 (1991).

**A-912**

DRAWN BY: Author